



METAL PANELS with STOFIX®

GUIDE DETAILS

Revision: July 9, 2010

www.knightwallsystems.com

TYPICAL HORIZONTAL JOINT	01
TYPICAL VERTICAL JOINT	02
TYPICAL SILL	03
PARAPET COPING	04
OUTSIDE CORNER	05
INSIDE CORNER	06
WINDOW HEAD	07
LOUVER HEAD	08
DOOR HEAD	09
WINDOW JAMBS	10
LOUVER JAMBS	11
DOOR JAMBS	12
WINDOW SILL	13
LOUVER SILL	14
ATTACHMENT (BASIC ASSEMBLY) DETAILS	15
COMPONENT DETAILS	16
2", 4" AND 6" WALL BRACKETS	17

NOTE:

THESE GUIDELINE DETAILS ARE PROVIDED FOR INFORMATION ONLY AND DO NOT REPLACE THE SERVICES OF A REGISTERED DESIGN PROFESSIONAL.

For multi-cladding transition details, or to download the CAD version of these details, please visit us online at www.knightwallsystems.com

© Knight Wall Systems
Deer Park, WA - 509.262.0104
PATENT PENDING

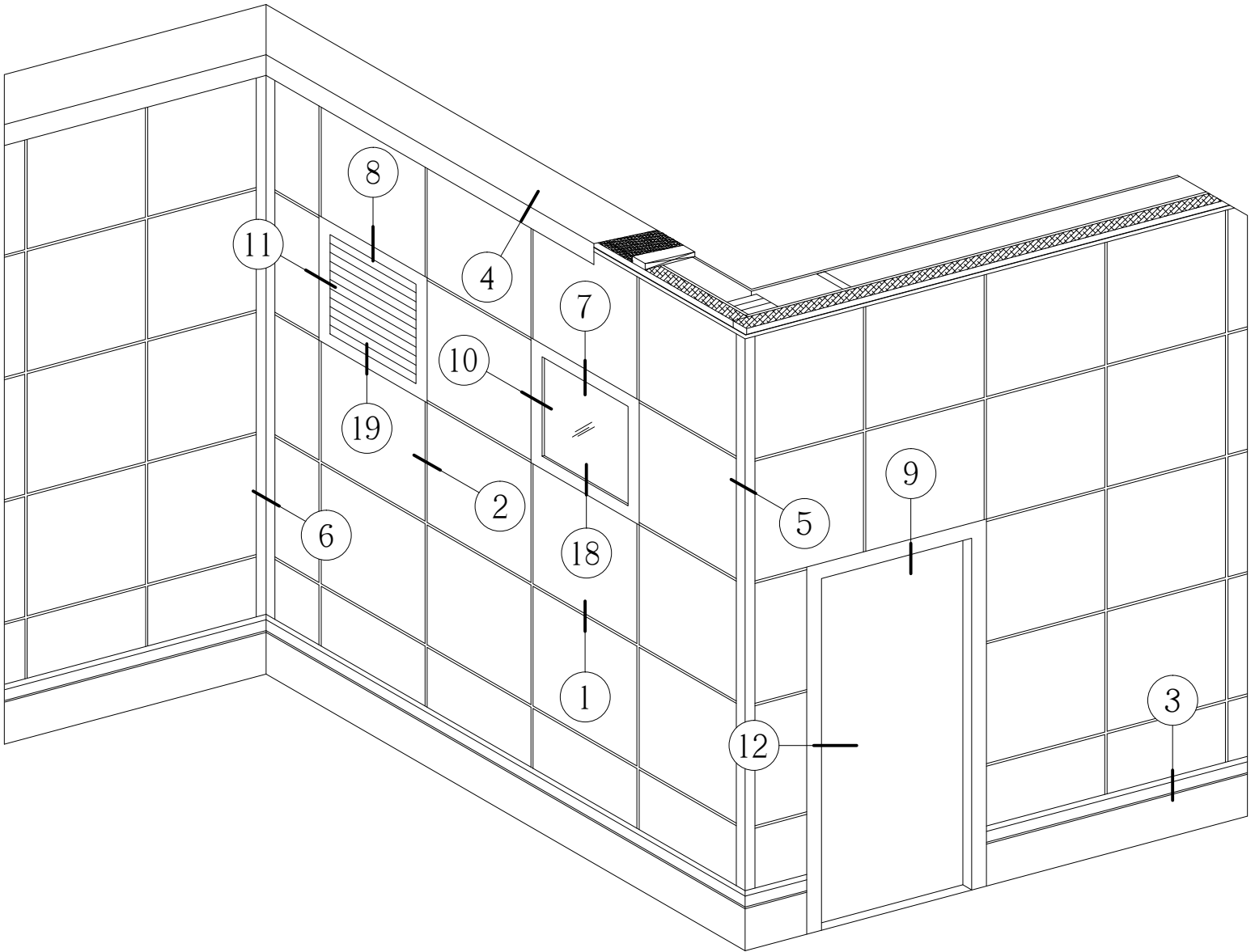


METAL PANELS with STOFIX®

GUIDE DETAILS

Revision: July 9, 2010

www.knightwallsystems.com



NOTE:

THESE GUIDELINE DETAILS ARE PROVIDED FOR INFORMATION ONLY AND DO NOT REPLACE THE SERVICES OF A REGISTERED DESIGN PROFESSIONAL.

For multi-cladding transition details, or to download the CAD version of these details, please visit us online at www.knightwallsystems.com

© Knight Wall Systems
Deer Park, WA - 509.262.0104
PATENT PENDING

00 **DETAIL REFERENCE**

Scale: NTS

Drawn by: BN

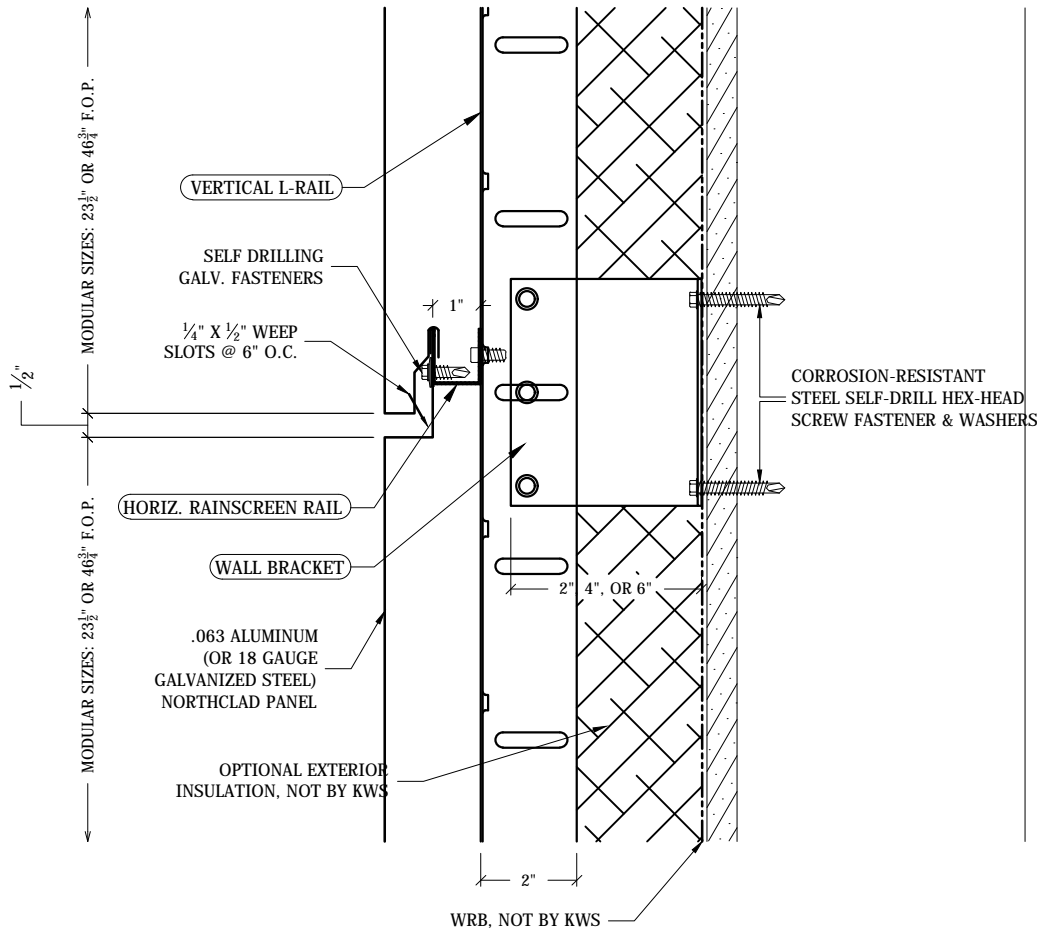


METAL PANELS with STOFIX®

GUIDE DETAILS

Revision: July 9, 2010

www.knightwallsystems.com



NOTE:

THESE GUIDELINE DETAILS ARE PROVIDED FOR INFORMATION ONLY AND DO NOT REPLACE THE SERVICES OF A REGISTERED DESIGN PROFESSIONAL.

For multi-cladding transition details, or to download the CAD version of these details, please visit us online at www.knightwallsystems.com

© Knight Wall Systems
Deer Park, WA - 509.262.0104
PATENT PENDING

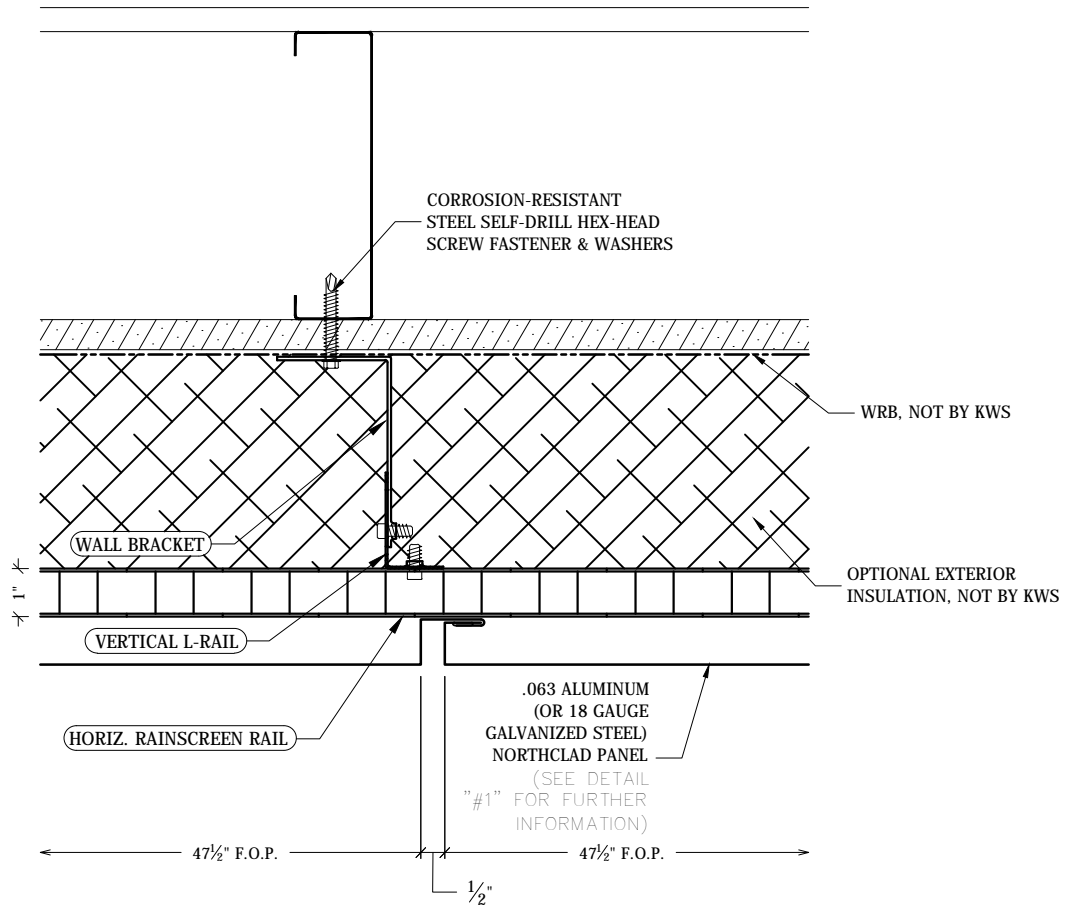


METAL PANELS with STOFIX®

GUIDE DETAILS

Revision: July 9, 2010

www.knightwallsystems.com



NOTE:

THESE GUIDELINE DETAILS ARE PROVIDED FOR INFORMATION ONLY AND DO NOT REPLACE THE SERVICES OF A REGISTERED DESIGN PROFESSIONAL.

For multi-cladding transition details, or to download the CAD version of these details, please visit us online at www.knightwallsystems.com

© Knight Wall Systems
Deer Park, WA - 509.262.0104
PATENT PENDING

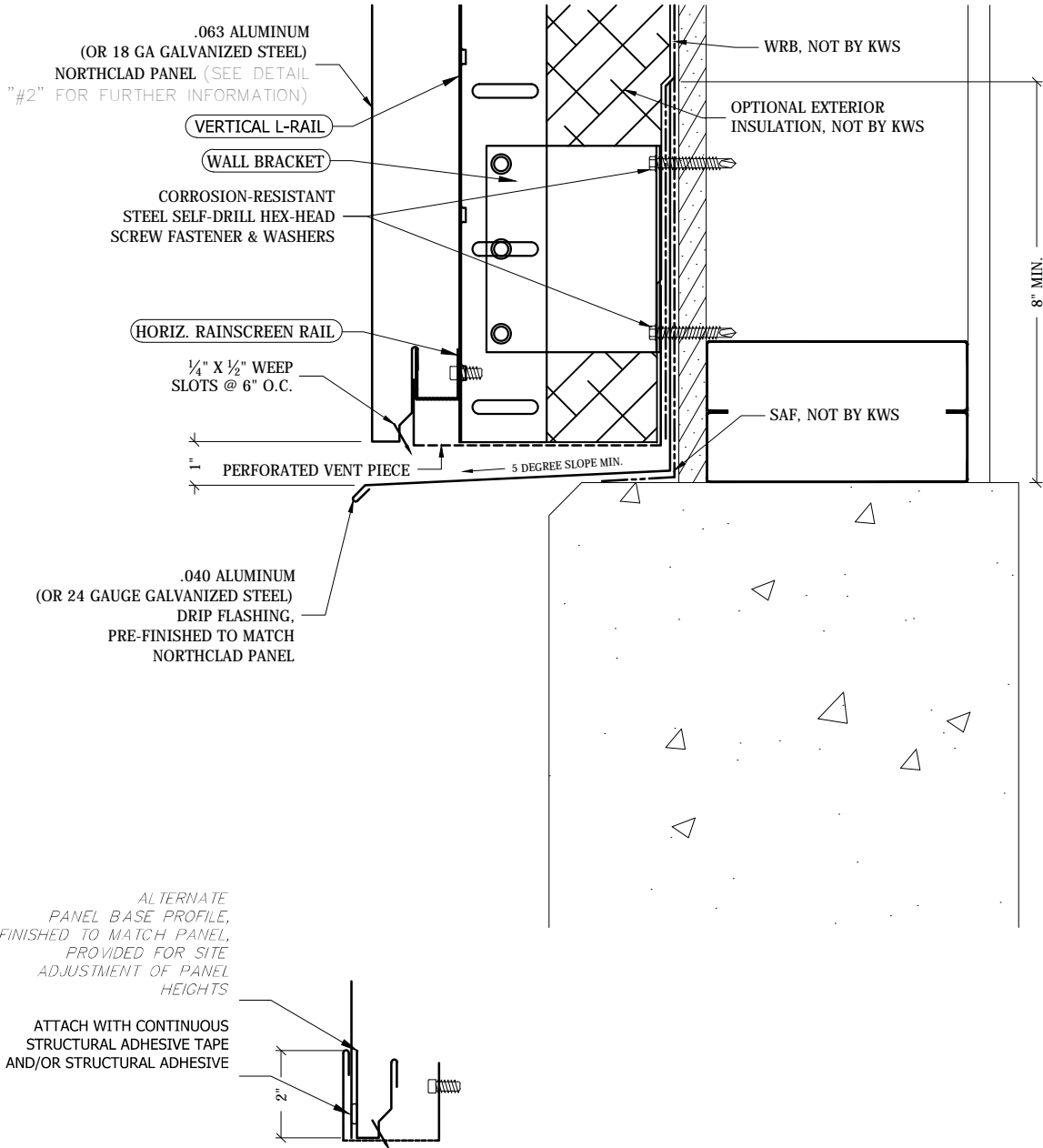


METAL PANELS with STOFIX[®]

GUIDE DETAILS

Revision: July 9, 2010

www.knightwallsystems.com



03 ALTERNATE SILL

Scale: 3" = 1'

NOTE:
THESE GUIDELINE DETAILS ARE PROVIDED FOR INFORMATION ONLY AND DO NOT REPLACE THE SERVICES OF A REGISTERED DESIGN PROFESSIONAL.
For multi-cladding transition details, or to download the CAD version of these details, please visit us online at www.knightwallsystems.com

© Knight Wall Systems
Deer Park, WA - 509.262.0104
PATENT PENDING

03 TYPICAL SILL

Scale: 3" = 1'-0" Drawn by: BN

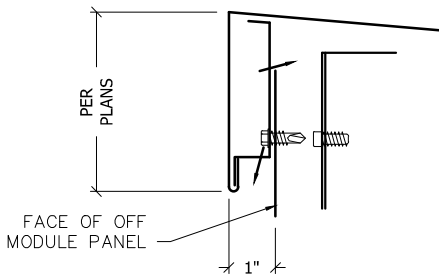
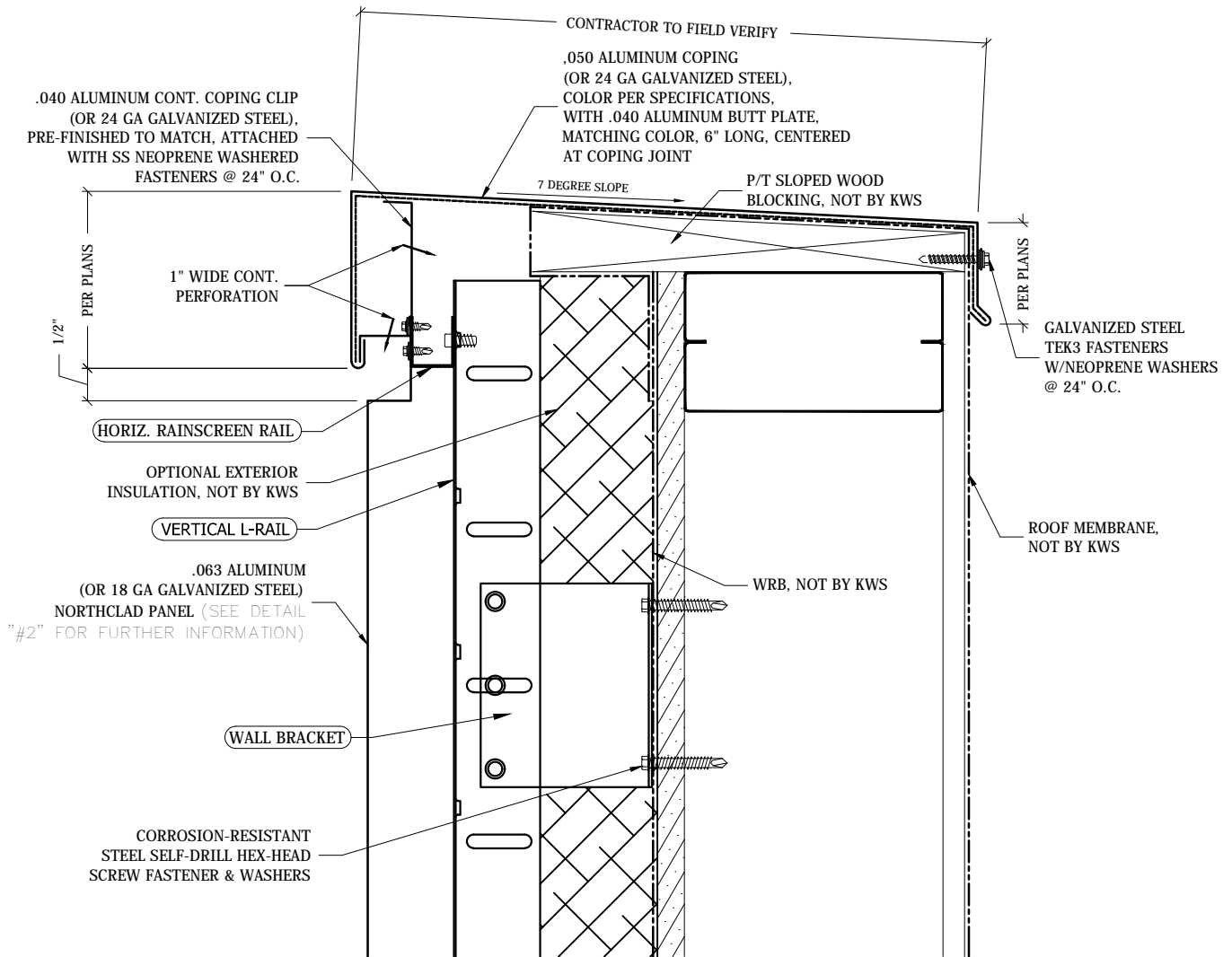


METAL PANELS with STOFIX®

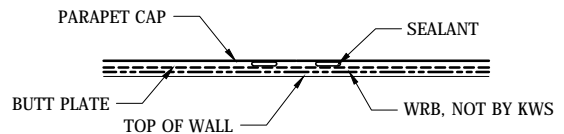
GUIDE DETAILS

Revision: July 9, 2010

www.knightwallsystems.com



04 OFF MODULE PANE @ COPING
Scale: 3"=1'



04 SECTION @ BUTT PLATE
Scale: 3"=1'

NOTE:
THESE GUIDELINE DETAILS ARE PROVIDED FOR INFORMATION ONLY AND DO NOT REPLACE THE SERVICES OF A REGISTERED DESIGN PROFESSIONAL.

For multi-cladding transition details, or to download the CAD version of these details, please visit us online at www.knightwallsystems.com

© Knight Wall Systems
Deer Park, WA - 509.262.0104
PATENT PENDING

04 PARAPET COPING
Scale: 3" = 1'-0" Drawn by: BN

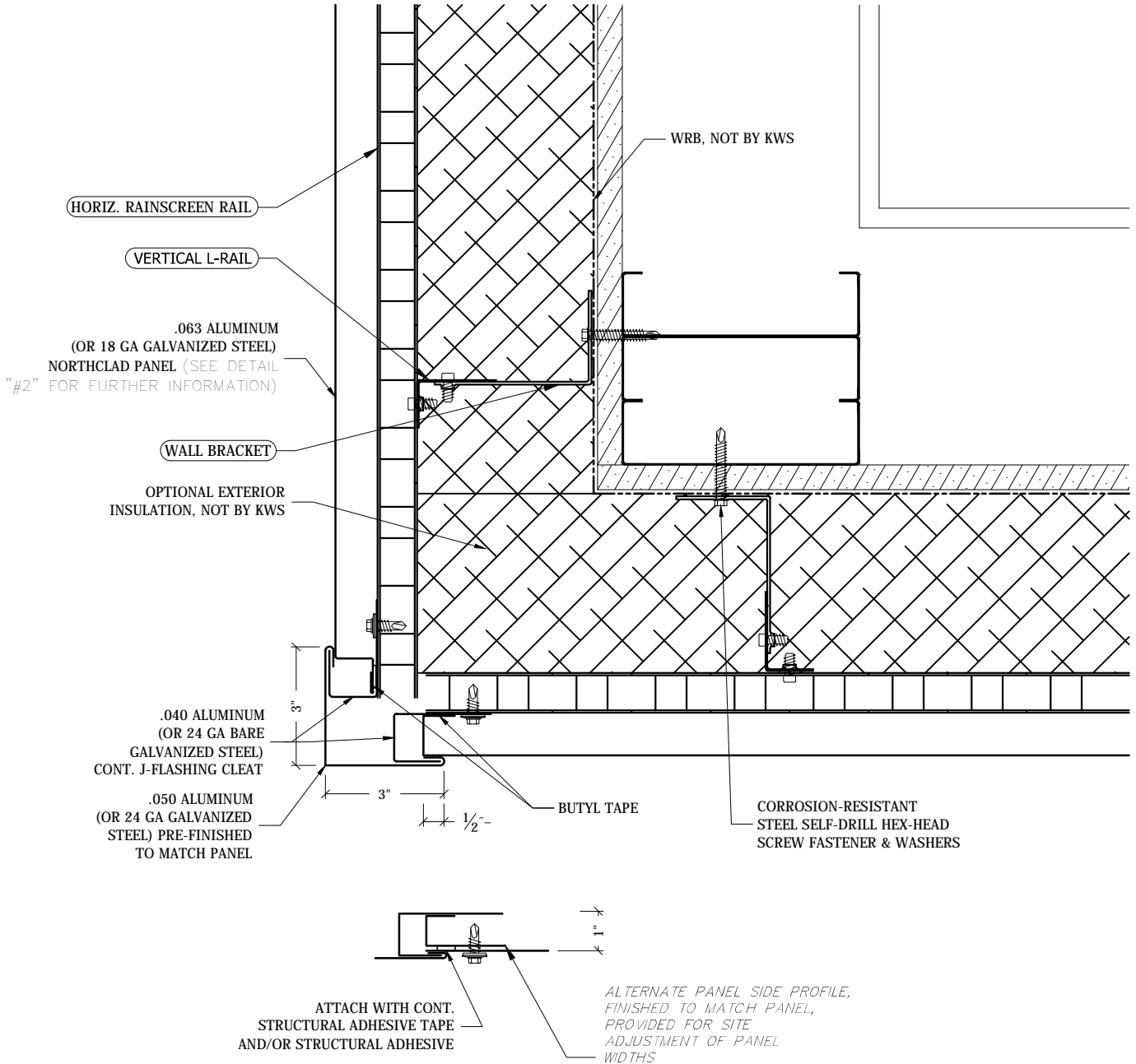


METAL PANELS with STOFIX®

GUIDE DETAILS

Revision: July 9, 2010

www.knightwallsystems.com



05 ALTERNATE O.S.C.
Scale: 3"=1'

NOTE:
THESE GUIDELINE DETAILS ARE PROVIDED FOR INFORMATION ONLY AND DO NOT REPLACE THE SERVICES OF A REGISTERED DESIGN PROFESSIONAL.
For multi-cladding transition details, or to download the CAD version of these details, please visit us online at www.knightwallsystems.com

© Knight Wall Systems
Deer Park, WA - 509.262.0104
PATENT PENDING

05 OUTSIDE CORNER
Scale: 3" = 1'-0" Drawn by: BN

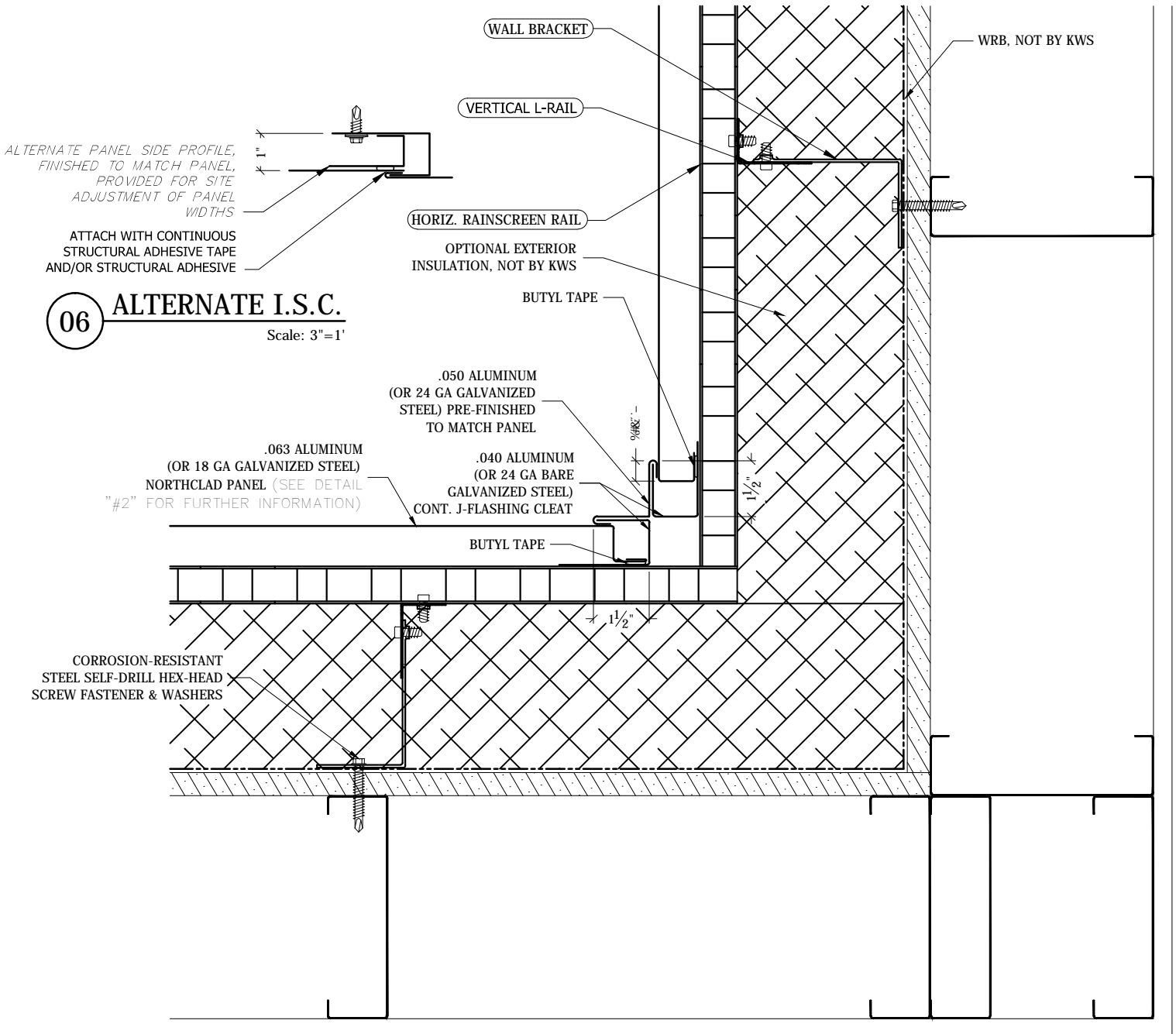


METAL PANELS with STOFIX®

GUIDE DETAILS

Revision: July 9, 2010

www.knightwallsystems.com



06 ALTERNATE I.S.C.
Scale: 3"=1'

NOTE:
THESE GUIDELINE DETAILS ARE PROVIDED FOR INFORMATION ONLY AND DO NOT REPLACE THE SERVICES OF A REGISTERED DESIGN PROFESSIONAL.
For multi-cladding transition details, or to download the CAD version of these details, please visit us online at www.knightwallsystems.com
© Knight Wall Systems
Deer Park, WA - 509.262.0104
PATENT PENDING

06 INSIDE CORNER
Scale: 3" = 1'-0" Drawn by: BN

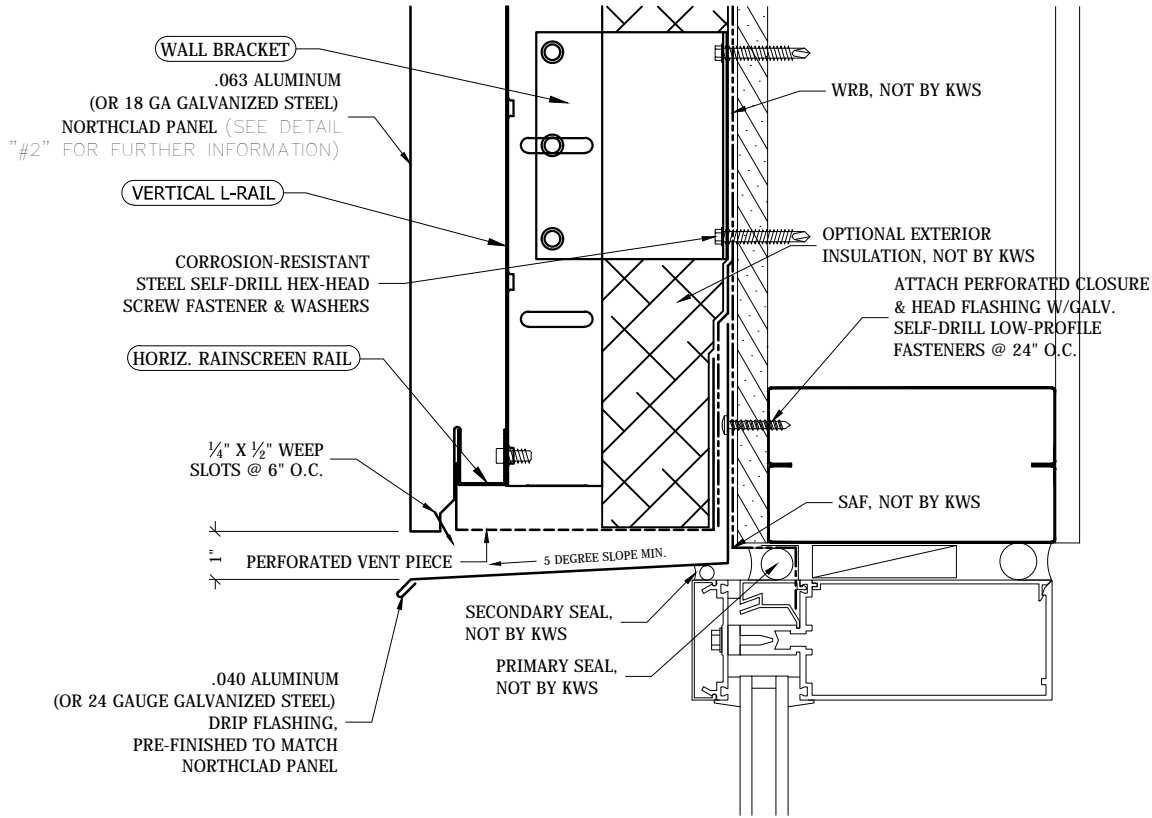


METAL PANELS with STOFIX®

GUIDE DETAILS

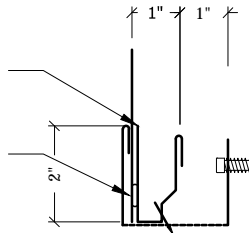
Revision: July 9, 2010

www.knightwallsystems.com



ALTERNATE PANEL BASE PROFILE, FINISHED TO MATCH PANEL, PROVIDED FOR SITE ADJUSTMENT OF PANEL HEIGHTS

ATTACH WITH CONTINUOUS STRUCTURAL ADHESIVE TAPE AND/OR STRUCTURAL ADHESIVE



07

ALTERNATE WINDOW HEAD

Scale: 3"=1'

NOTE:

THESE GUIDELINE DETAILS ARE PROVIDED FOR INFORMATION ONLY AND DO NOT REPLACE THE SERVICES OF A REGISTERED DESIGN PROFESSIONAL.

For multi-cladding transition details, or to download the CAD version of these details, please visit us online at www.knightwallsystems.com

© Knight Wall Systems
 Deer Park, WA - 509.262.0104
 PATENT PENDING

07

WINDOW HEAD

Scale: 3" = 1'-0"

Drawn by: BN

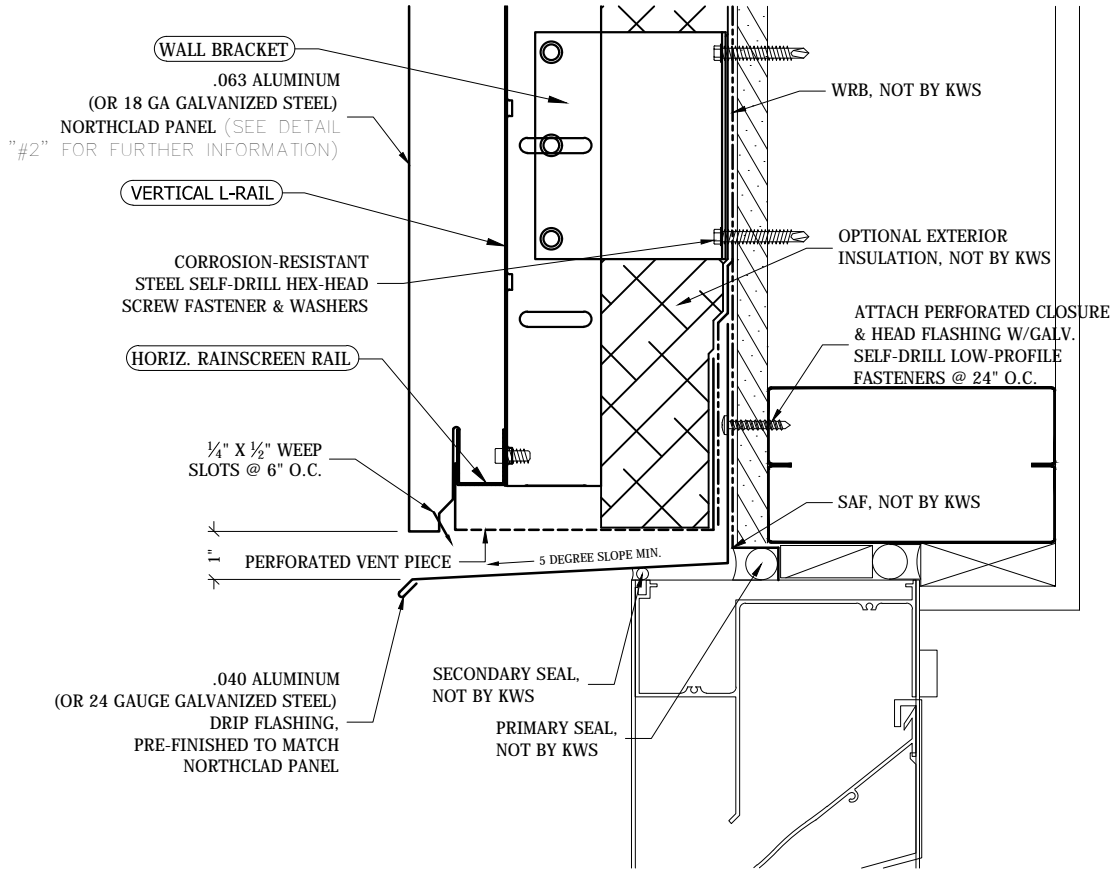


METAL PANELS with STOFIX®

GUIDE DETAILS

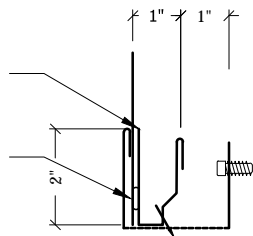
Revision: July 9, 2010

www.knightwallsystems.com



ALTERNATE PANEL BASE PROFILE, FINISHED TO MATCH PANEL, PROVIDED FOR SITE ADJUSTMENT OF PANEL HEIGHTS

ATTACH WITH CONTINUOUS STRUCTURAL ADHESIVE TAPE AND/OR STRUCTURAL ADHESIVE



08 ALTERNATE LOUVER HEAD

Scale: 3"=1'

NOTE:

THESE GUIDELINE DETAILS ARE PROVIDED FOR INFORMATION ONLY AND DO NOT REPLACE THE SERVICES OF A REGISTERED DESIGN PROFESSIONAL.

For multi-cladding transition details, or to download the CAD version of these details, please visit us online at www.knightwallsystems.com

© Knight Wall Systems
Deer Park, WA - 509.262.0104
PATENT PENDING

08 LOUVER HEAD

Scale: 3" = 1'-0"

Drawn by: BN

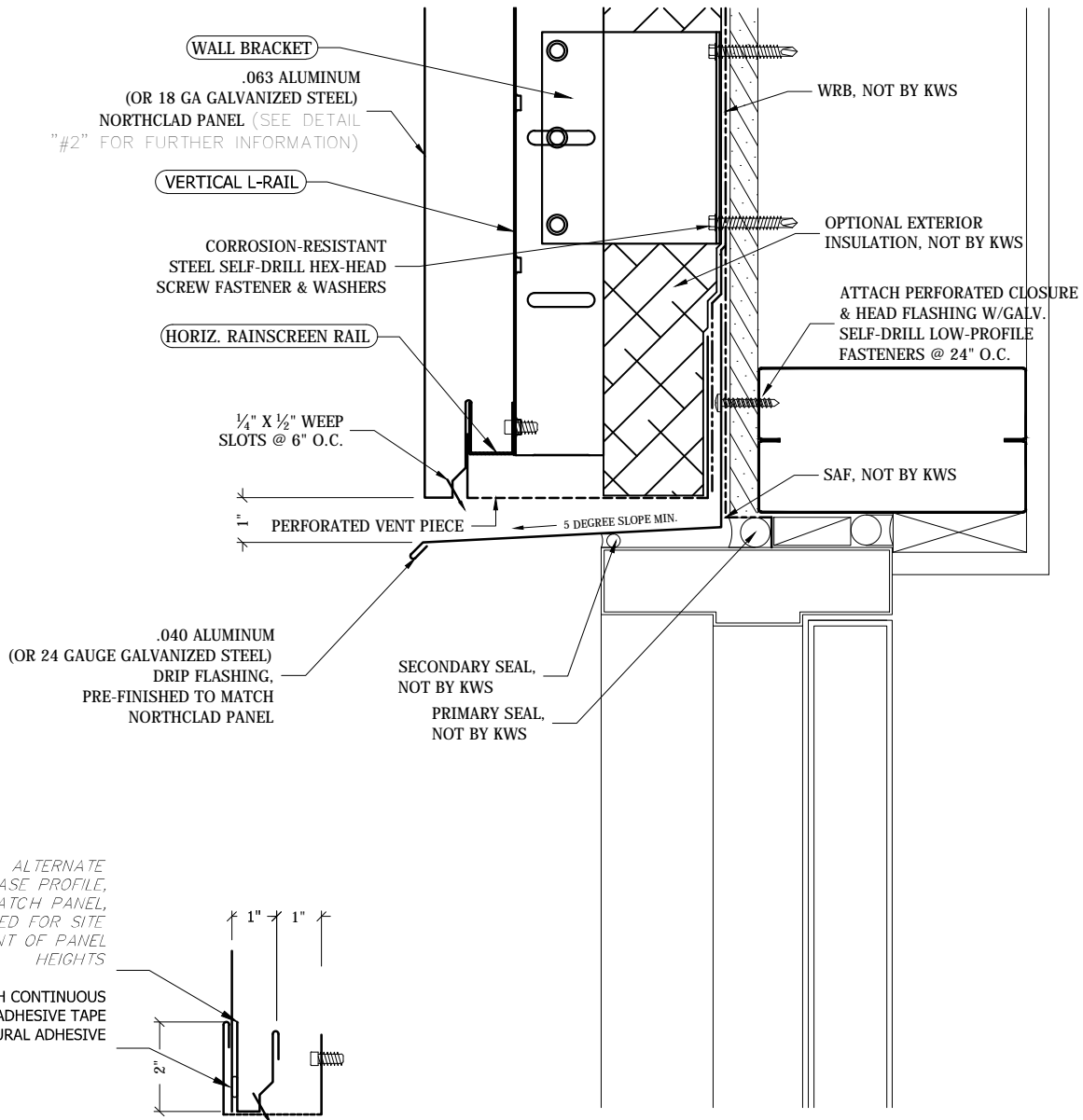


METAL PANELS with STOFIX®

GUIDE DETAILS

Revision: July 9, 2010

www.knightwallsystems.com



09 ALTERNATE DOOR HEAD

Scale: 3"=1'

NOTE:
THESE GUIDELINE DETAILS ARE PROVIDED FOR INFORMATION ONLY AND DO NOT REPLACE THE SERVICES OF A REGISTERED DESIGN PROFESSIONAL.
For multi-cladding transition details, or to download the CAD version of these details, please visit us online at www.knightwallsystems.com

© Knight Wall Systems
Deer Park, WA - 509.262.0104
PATENT PENDING

09 DOOR HEAD

Scale: 3" = 1'-0"

Drawn by: BN

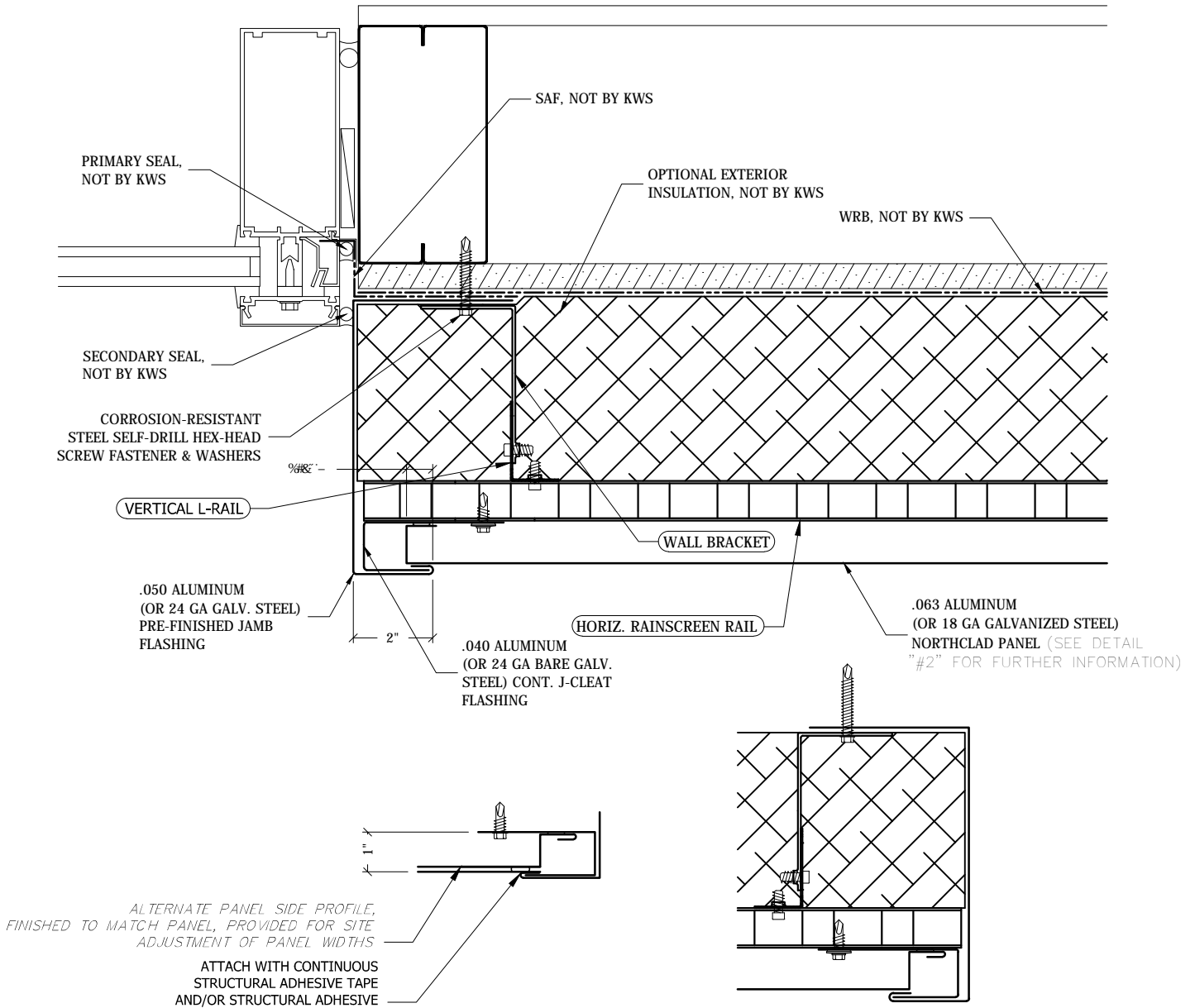


METAL PANELS with STOFIX®

GUIDE DETAILS

Revision: July 9, 2010

www.knightwallsystems.com



10 ALTERNATE WINDOW JAMB
Scale: 3"=1'

10 WINDOW JAMB - LEFT
Scale: 3"=1'

NOTE:
THESE GUIDELINE DETAILS ARE PROVIDED FOR INFORMATION ONLY AND DO NOT REPLACE THE SERVICES OF A REGISTERED DESIGN PROFESSIONAL.
For multi-cladding transition details, or to download the CAD version of these details, please visit us online at www.knightwallsystems.com

© Knight Wall Systems
Deer Park, WA - 509.262.0104
PATENT PENDING

10 WINDOW JAMB - RIGHT
Scale: 3" = 1'-0" Drawn by: BN

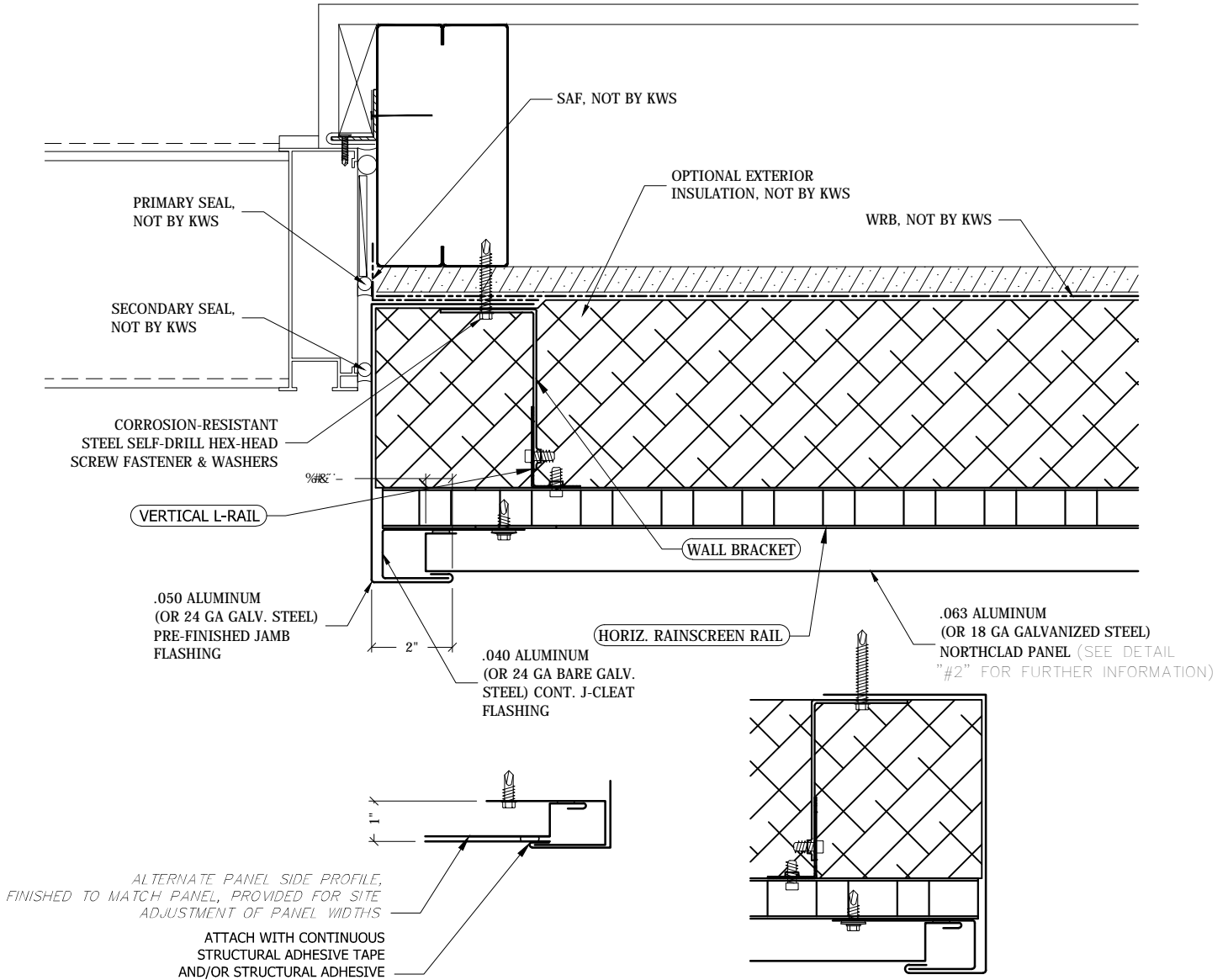


METAL PANELS with STOFIX®

GUIDE DETAILS

Revision: July 9, 2010

www.knightwallsystems.com



11 ALTERNATE LOUVER JAMB
Scale: 3"=1'

11 LOUVER JAMB - LEFT
Scale: 3"=1'-0"

11 LOUVER JAMB - RIGHT
Scale: 3" = 1'-0" Drawn by: BN

NOTE:
THESE GUIDELINE DETAILS ARE PROVIDED FOR INFORMATION ONLY AND DO NOT REPLACE THE SERVICES OF A REGISTERED DESIGN PROFESSIONAL.
For multi-cladding transition details, or to download the CAD version of these details, please visit us online at www.knightwallsystems.com
© Knight Wall Systems
Deer Park, WA - 509.262.0104
PATENT PENDING

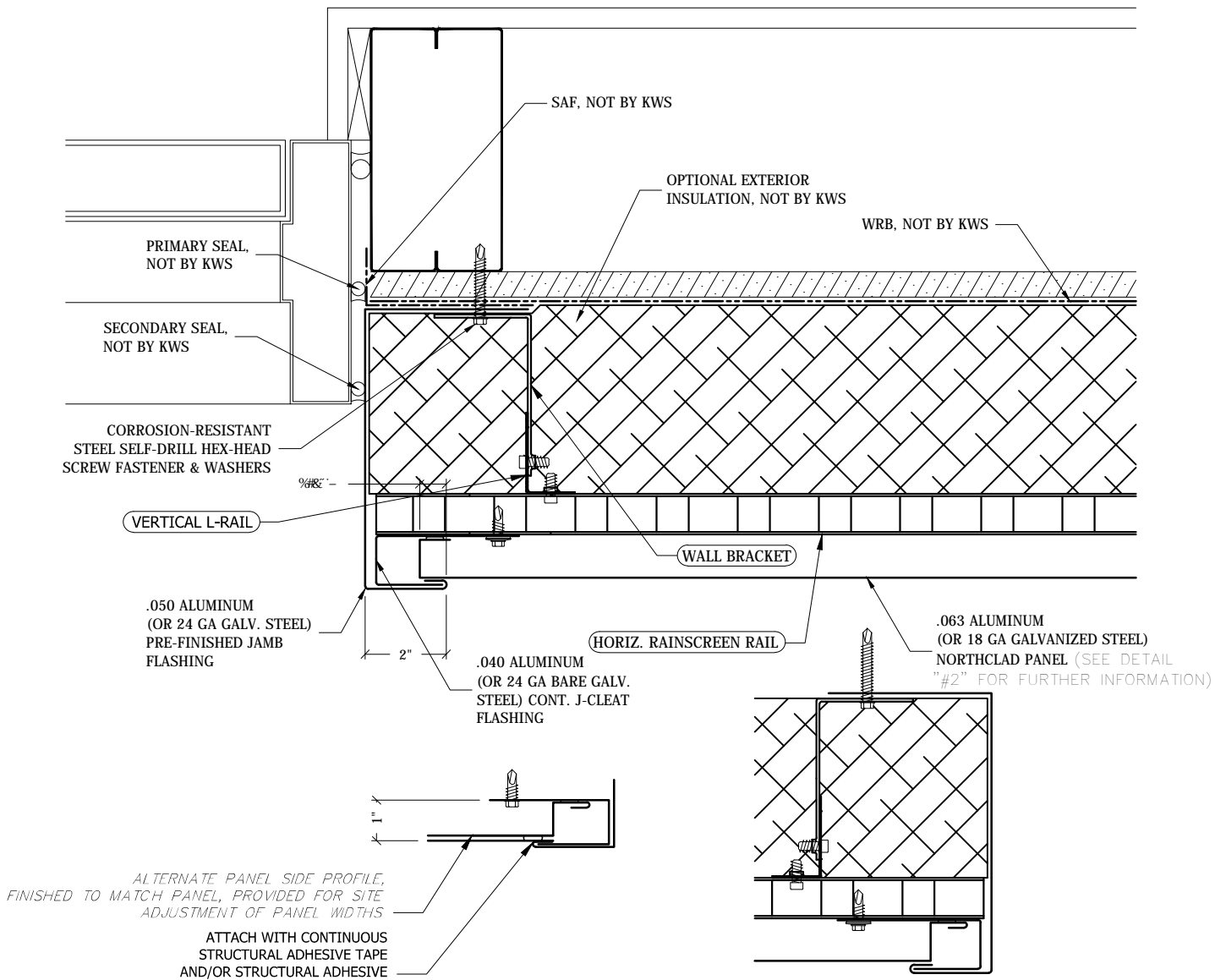


METAL PANELS with STOFIX®

GUIDE DETAILS

Revision: July 9, 2010

www.knightwallsystems.com



12 ALTERNATE DOOR JAMB
Scale: 3"=1'

12 DOOR JAMB - LEFT
Scale: 3"=1'

12 DOOR JAMB - RIGHT
Scale: 3" = 1'-0" Drawn by: BN

NOTE:
THESE GUIDELINE DETAILS ARE PROVIDED FOR INFORMATION ONLY AND DO NOT REPLACE THE SERVICES OF A REGISTERED DESIGN PROFESSIONAL.
For multi-cladding transition details, or to download the CAD version of these details, please visit us online at www.knightwallsystems.com
© Knight Wall Systems
Deer Park, WA - 509.262.0104
PATENT PENDING

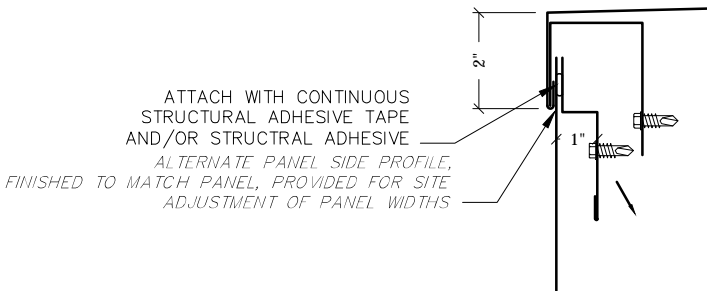
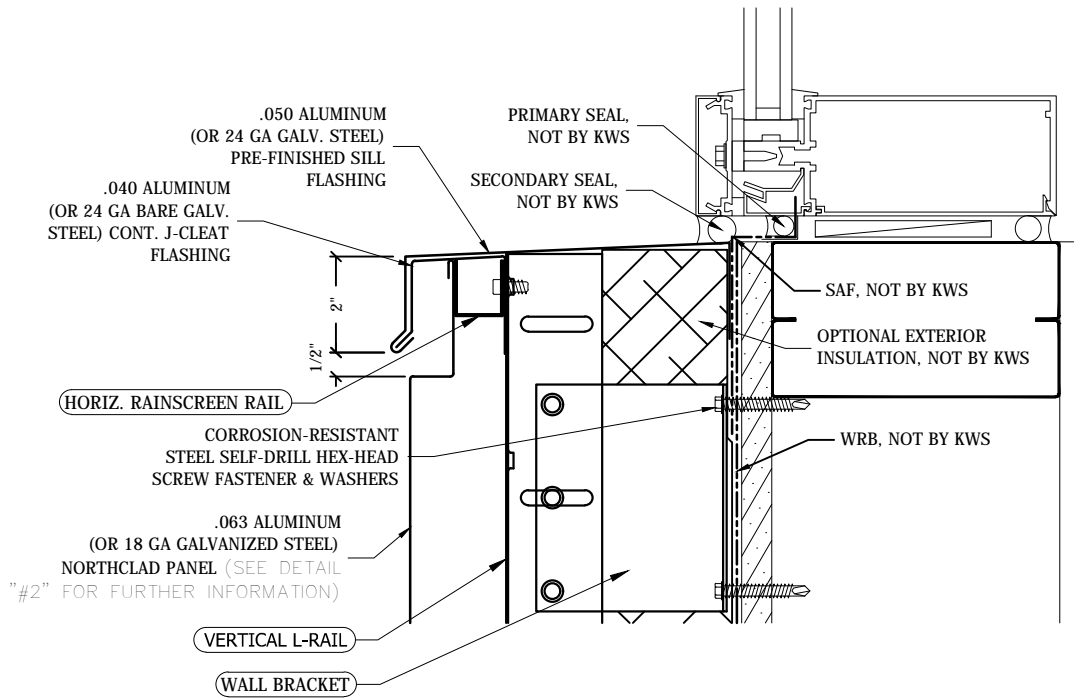


METAL PANELS with STOFIX®

GUIDE DETAILS

Revision: July 9, 2010

www.knightwallsystems.com



13 ALTERNATE WINDOW SILL

Scale: 3"=1'

NOTE:
 THESE GUIDELINE DETAILS ARE PROVIDED FOR INFORMATION ONLY AND DO NOT REPLACE THE SERVICES OF A REGISTERED DESIGN PROFESSIONAL.
 For multi-cladding transition details, or to download the CAD version of these details, please visit us online at www.knightwallsystems.com

© Knight Wall Systems
 Deer Park, WA - 509.262.0104
 PATENT PENDING

13 WINDOW SILL

Scale: 3" = 1'-0" Drawn by: BN

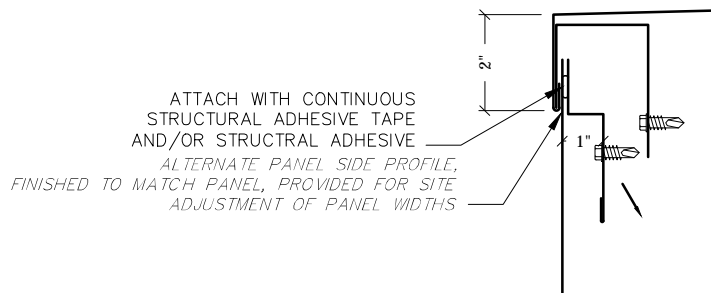
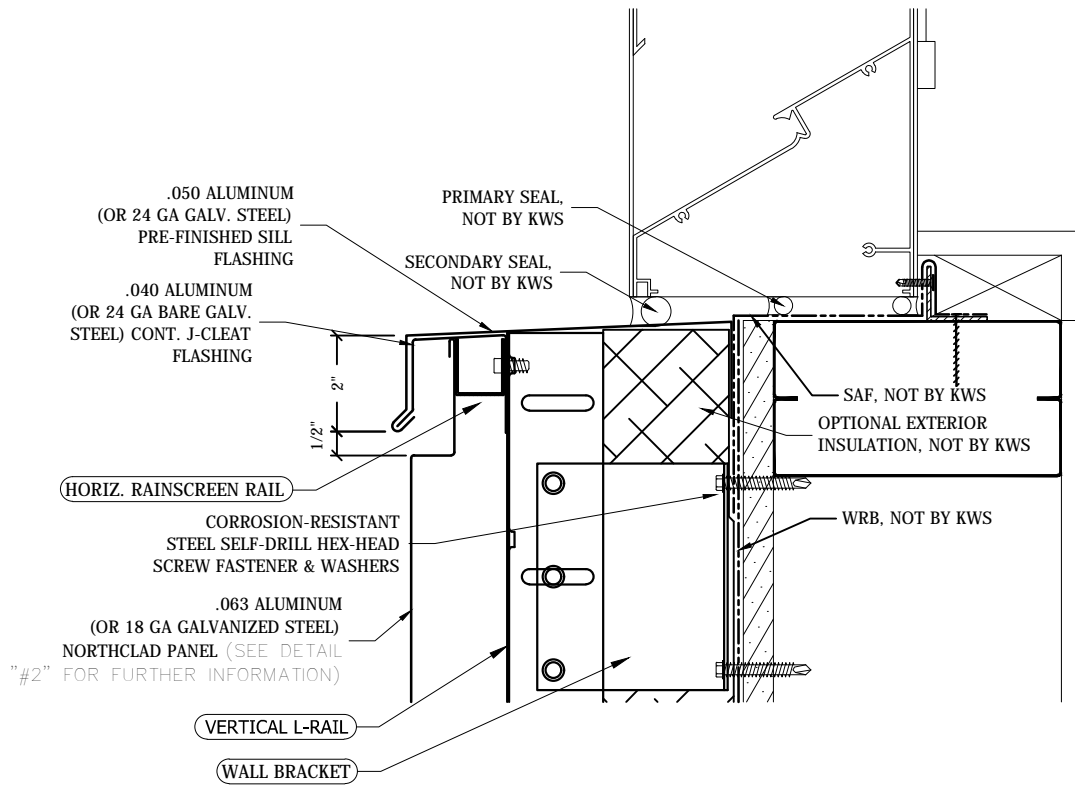


METAL PANELS with STOFIX®

GUIDE DETAILS

Revision: July 9, 2010

www.knightwallsystems.com



14 ALTERNATE LOUVER SILL
Scale: 3"=1'

NOTE:
THESE GUIDELINE DETAILS ARE PROVIDED FOR INFORMATION ONLY AND DO NOT REPLACE THE SERVICES OF A REGISTERED DESIGN PROFESSIONAL.
For multi-cladding transition details, or to download the CAD version of these details, please visit us online at www.knightwallsystems.com

© Knight Wall Systems
Deer Park, WA - 509.262.0104
PATENT PENDING

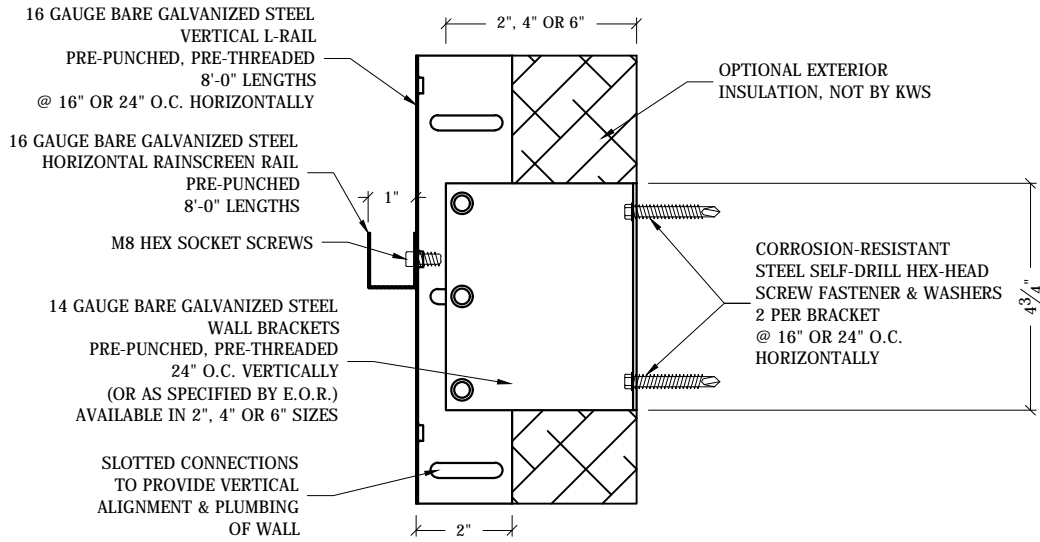


METAL PANELS with STOFIX®

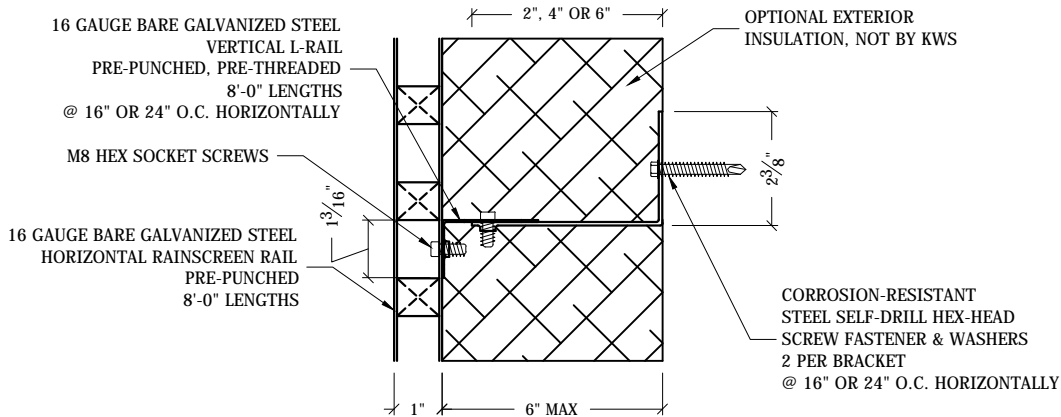
GUIDE DETAILS

Revision: July 9, 2010

www.knightwallsystems.com



SECTION VIEW
Scale: 3" = 1'



PLAN VIEW
Scale: 3" = 1'

NOTE:
THESE GUIDELINE DETAILS ARE PROVIDED FOR INFORMATION ONLY AND DO NOT REPLACE THE SERVICES OF A REGISTERED DESIGN PROFESSIONAL.
For multi-cladding transition details, or to download the CAD version of these details, please visit us online at www.knightwallsystems.com

© Knight Wall Systems
Deer Park, WA - 509.262.0104
PATENT PENDING

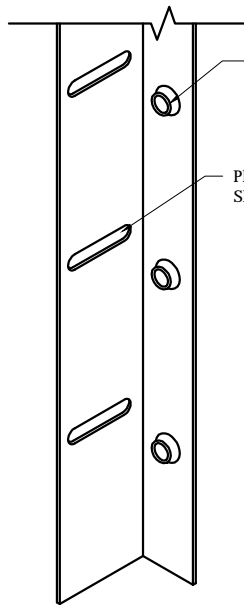
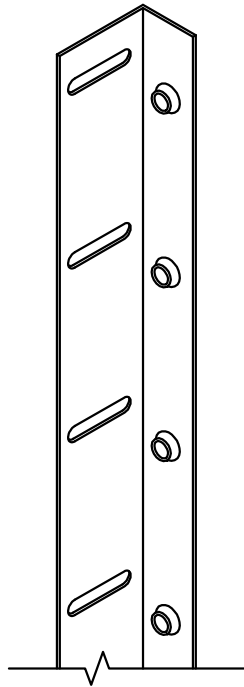


METAL PANELS with STOFIX®

GUIDE DETAILS

Revision: July 9, 2010

www.knightwallsystems.com



PRE-PUNCHED & PRE-THREADED FOR M8 SCREW @ 3.62" O.C.

PRE-PUNCHED 1.183" X .318" SLOT @ 3.62" O.C.

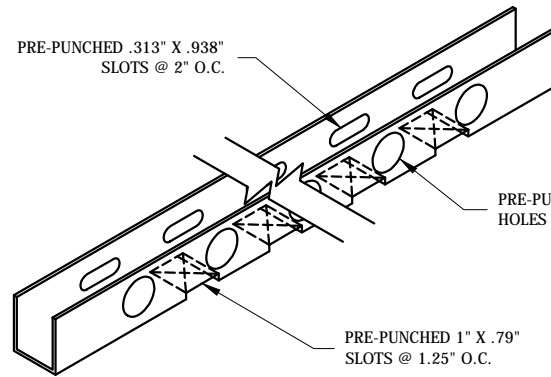
PRE-PUNCHED .313" X 1.688" SLOTS

PRE-PUNCHED, PRE-THREADED FOR M8 SCREW

PRE-PUNCHED .563" HOLE

MIDDLE HOLE USED FOR MID-RAIL CONNECTION, TOP & BOTTOM HOLE USED AT VERTICAL L-RAIL JOINTS FOR PROPER ALIGNMENT

1 WALL BRACKET
Scale: 3" = 1'



PRE-PUNCHED .313" X .938" SLOTS @ 2" O.C.

PRE-PUNCHED .75" HOLES @ 2" O.C.

PRE-PUNCHED 1" X .79" SLOTS @ 1.25" O.C.

3 HORIZ. RAIL
Scale: 3" = 1'

2 VERTICAL L-RAIL
Scale: 3" = 1'

NOTE:
THESE GUIDELINE DETAILS ARE PROVIDED FOR INFORMATION ONLY AND DO NOT REPLACE THE SERVICES OF A REGISTERED DESIGN PROFESSIONAL.

For multi-cladding transition details, or to download the CAD version of these details, please visit us online at www.knightwallsystems.com

© Knight Wall Systems
Deer Park, WA - 509.262.0104
PATENT PENDING



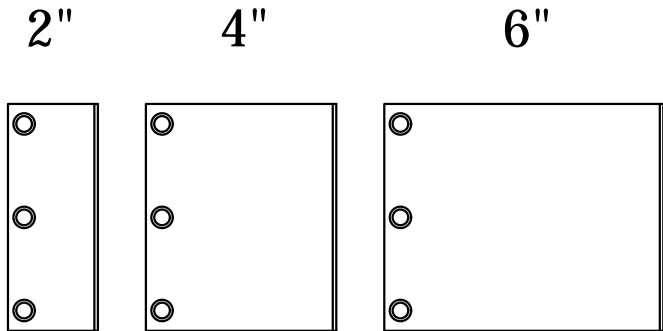
METAL PANELS with STOFIX®

GUIDE DETAILS

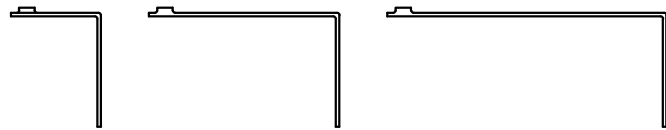
Revision: July 9, 2010

www.knightwallsystems.com

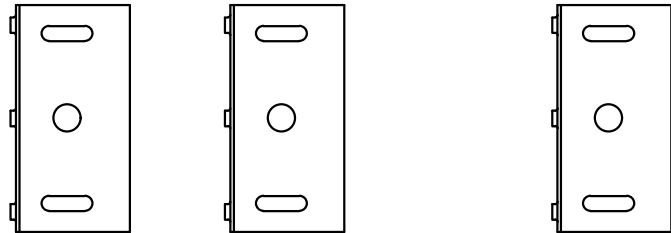
SIDE (SECTION) VIEW



PROFILE (PLAN) VIEW



FRONT (ELEVATION) VIEW



NOTE:

THESE GUIDELINE DETAILS ARE PROVIDED FOR INFORMATION ONLY AND DO NOT REPLACE THE SERVICES OF A REGISTERED DESIGN PROFESSIONAL.

For multi-cladding transition details, or to download the CAD version of these details, please visit us online at www.knightwallsystems.com

© Knight Wall Systems
Deer Park, WA - 509.262.0104
PATENT PENDING