



STUCCO with PlasterTrack™

GUIDE DETAILS

Revision: September 08, 2010

www.knightwallsystems.com

TYPICAL PLAN VIEW	01
TYPICAL SECTION VIEW	2A
TYPICAL SECTION VIEW @ CEMENT BOARD JOINT	2B
TYPICAL HORIZONTAL EXPANSION JOINT	03
HORIZONTAL EXPANSION JOINT w/FLOATING BAND	04
BASE OF WALL	05
PARAPET/COPING	06
INSIDE CORNER w/o EXPANSION JOINT	07
INSIDE CORNER w/EXPANSION JOINT	08
OUTSIDE CORNER	09
WINDOW HEAD	10
WINDOW HEAD w/DECORATIVE BAND	11
WINDOW JAMB w/METAL TRIM	12
WINDOW JAMB w/STUCCO	13
WINDOW SILL	14
WINDOW SILL w/DECORATIVE BAND	15
STUCCO/METAL MID-WALL TRANSITION	16
STUCCO/METAL OUTSIDE CORNER TRANSITION	17
STUCCO/METAL INSIDE CORNER TRANSITION	18
STOFIX w/PlasterTrack ATTACHMENT DETAILS	19
COMPONENT DETAILS	20
2", 4" AND 6" WALL BRACKETS	21

NOTE:

THESE GUIDELINE DETAILS ARE PROVIDED FOR INFORMATION ONLY AND DO NOT REPLACE THE SERVICES OF A REGISTERED DESIGN PROFESSIONAL.

For multi-cladding transition details, or to download the CAD version of these details, please visit us online at www.knightwallsystems.com

© Knight Wall Systems
Deer Park, WA - 509.262.0104
PATENT PENDING



TABLE OF CONTENTS

Scale: N/A

Drawn by: BN

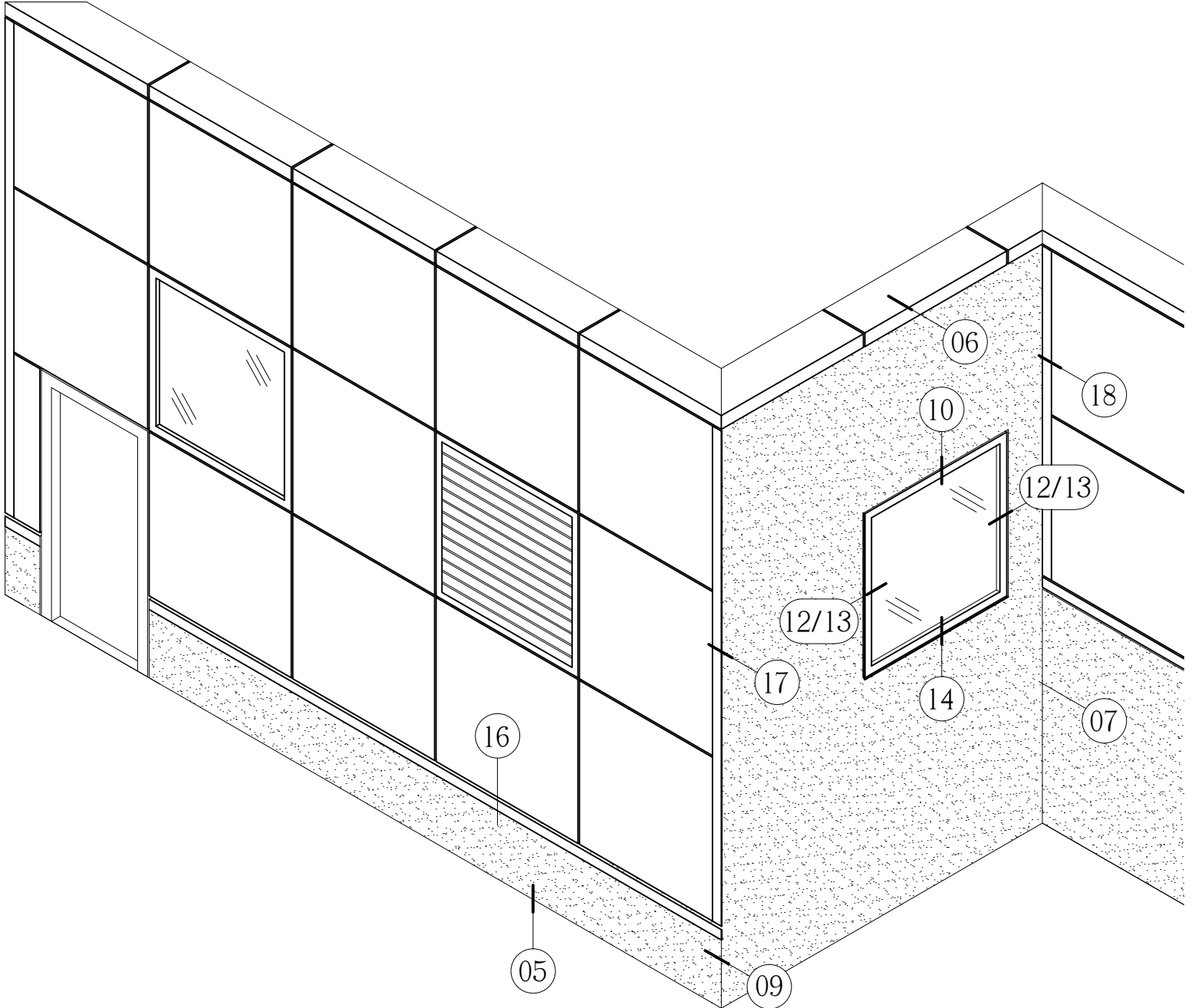


STUCCO with PlasterTrack™

GUIDE DETAILS

Revision: September 08, 2010

www.knightwallsystems.com



NOTE:

THESE GUIDELINE DETAILS ARE PROVIDED FOR INFORMATION ONLY AND DO NOT REPLACE THE SERVICES OF A REGISTERED DESIGN PROFESSIONAL.

For multi-cladding transition details, or to download the CAD version of these details, please visit us online at www.knightwallsystems.com

© Knight Wall Systems
Deer Park, WA - 509.262.0104
PATENT PENDING

00

DETAIL REFERENCE

Scale: NTS

Drawn by: BN

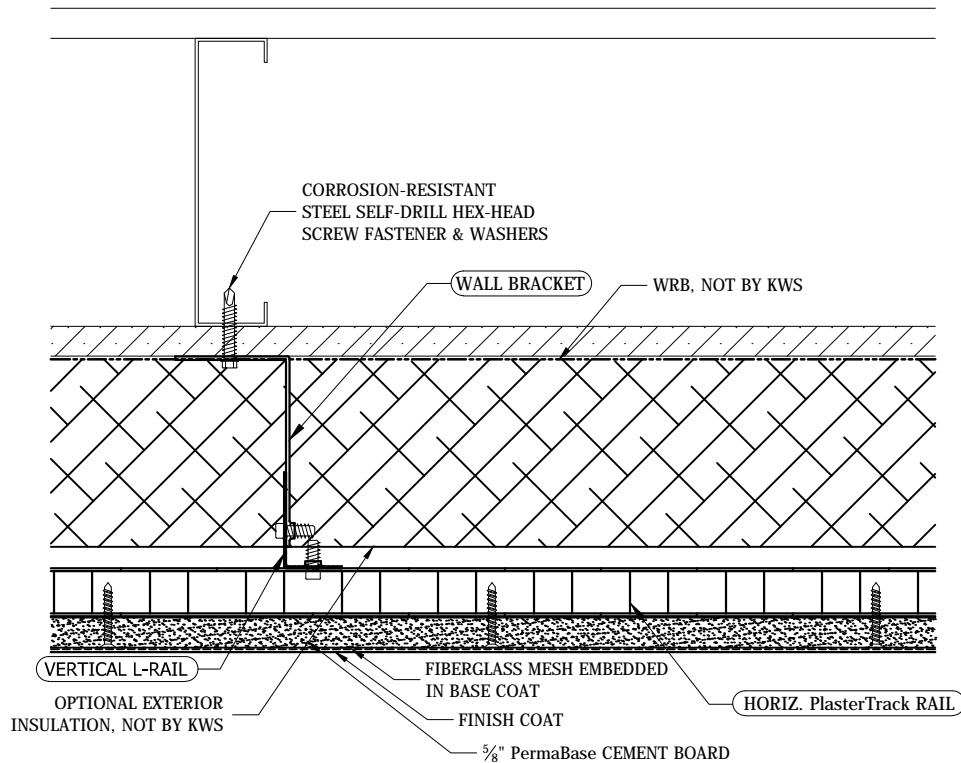


STUCCO with PlasterTrack™

GUIDE DETAILS

Revision: September 08, 2010

www.knightwallsystems.com



NOTE:

THESE GUIDELINE DETAILS ARE PROVIDED FOR INFORMATION ONLY AND DO NOT REPLACE THE SERVICES OF A REGISTERED DESIGN PROFESSIONAL.

For multi-cladding transition details, or to download the CAD version of these details, please visit us online at www.knightwallsystems.com

© Knight Wall Systems
Deer Park, WA - 509.262.0104
PATENT PENDING

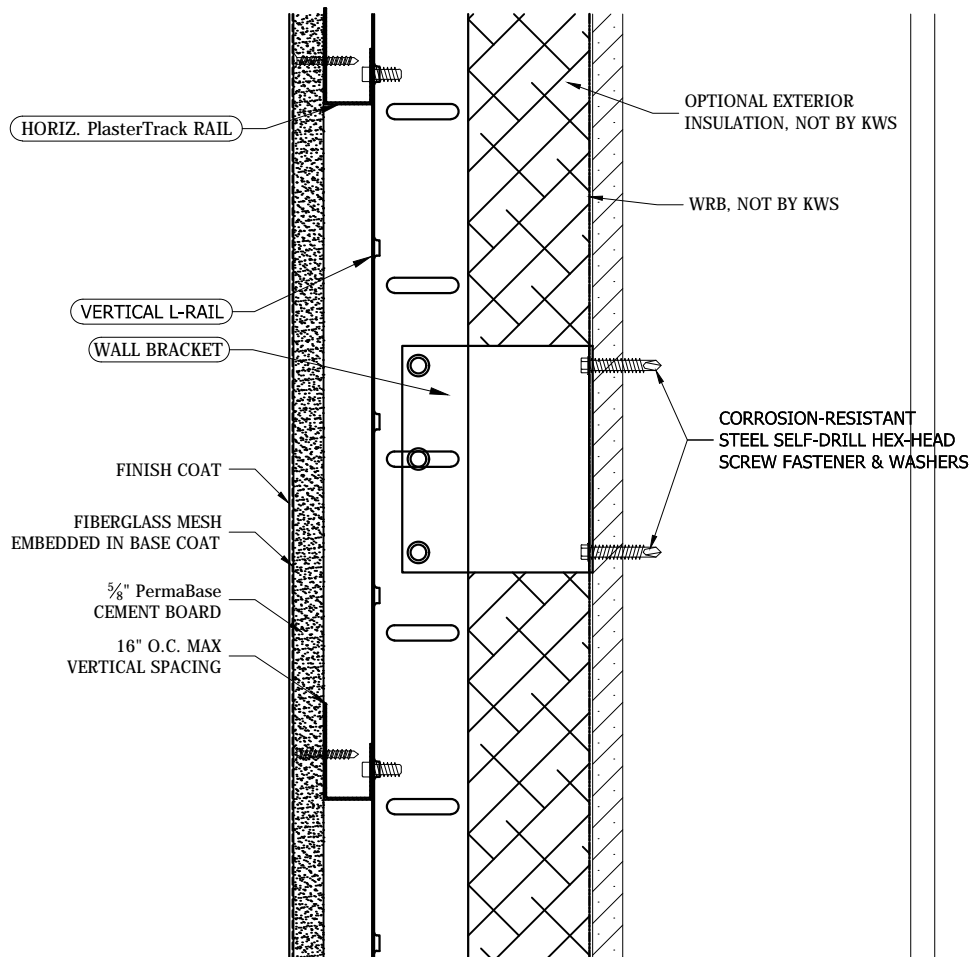


STUCCO with PlasterTrack™

GUIDE DETAILS

Revision: September 08, 2010

www.knightwallsystems.com



NOTE:

THESE GUIDELINE DETAILS ARE PROVIDED FOR INFORMATION ONLY AND DO NOT REPLACE THE SERVICES OF A REGISTERED DESIGN PROFESSIONAL.

For multi-cladding transition details, or to download the CAD version of these details, please visit us online at www.knightwallsystems.com

© Knight Wall Systems
Deer Park, WA - 509.262.0104
PATENT PENDING

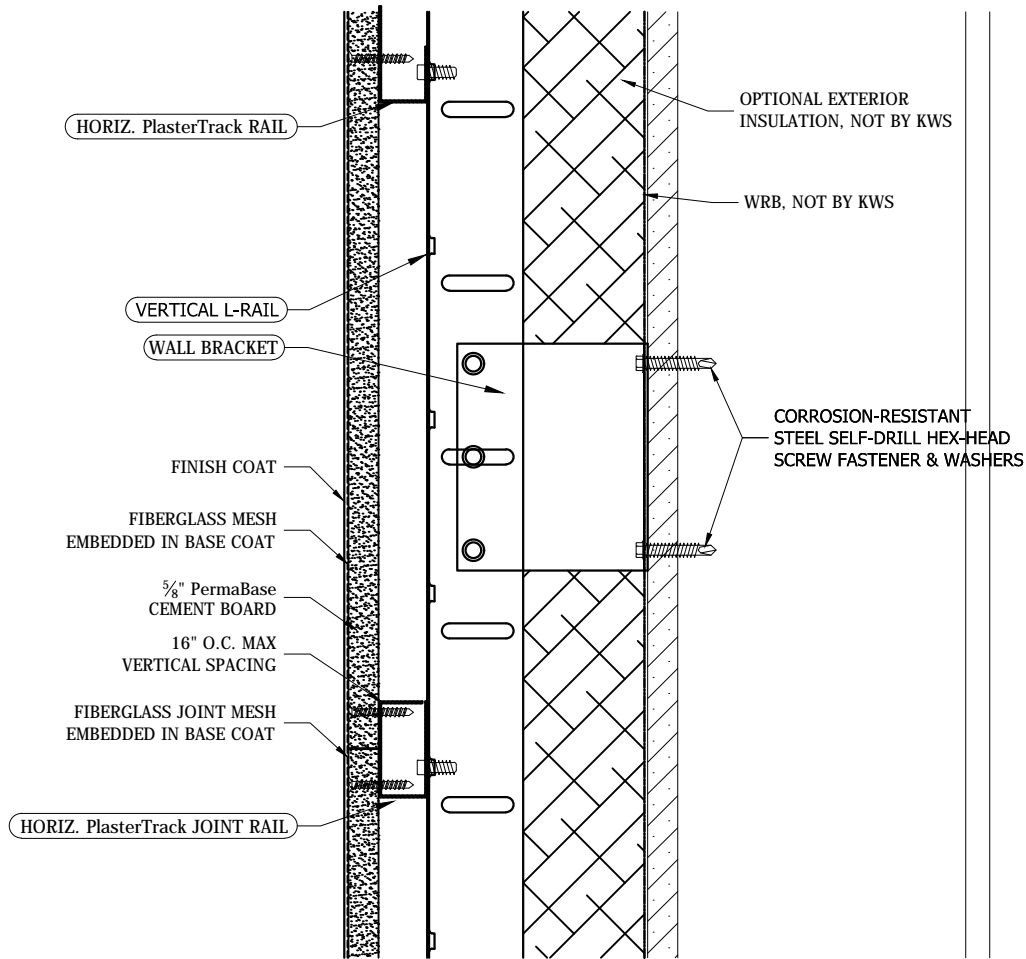


STUCCO with PlasterTrack™

GUIDE DETAILS

Revision: September 08, 2010

www.knightwallsystems.com



NOTE:

THESE GUIDELINE DETAILS ARE PROVIDED FOR INFORMATION ONLY AND DO NOT REPLACE THE SERVICES OF A REGISTERED DESIGN PROFESSIONAL.

For multi-cladding transition details, or to download the CAD version of these details, please visit us online at www.knightwallsystems.com

© Knight Wall Systems
Deer Park, WA - 509.262.0104
PATENT PENDING

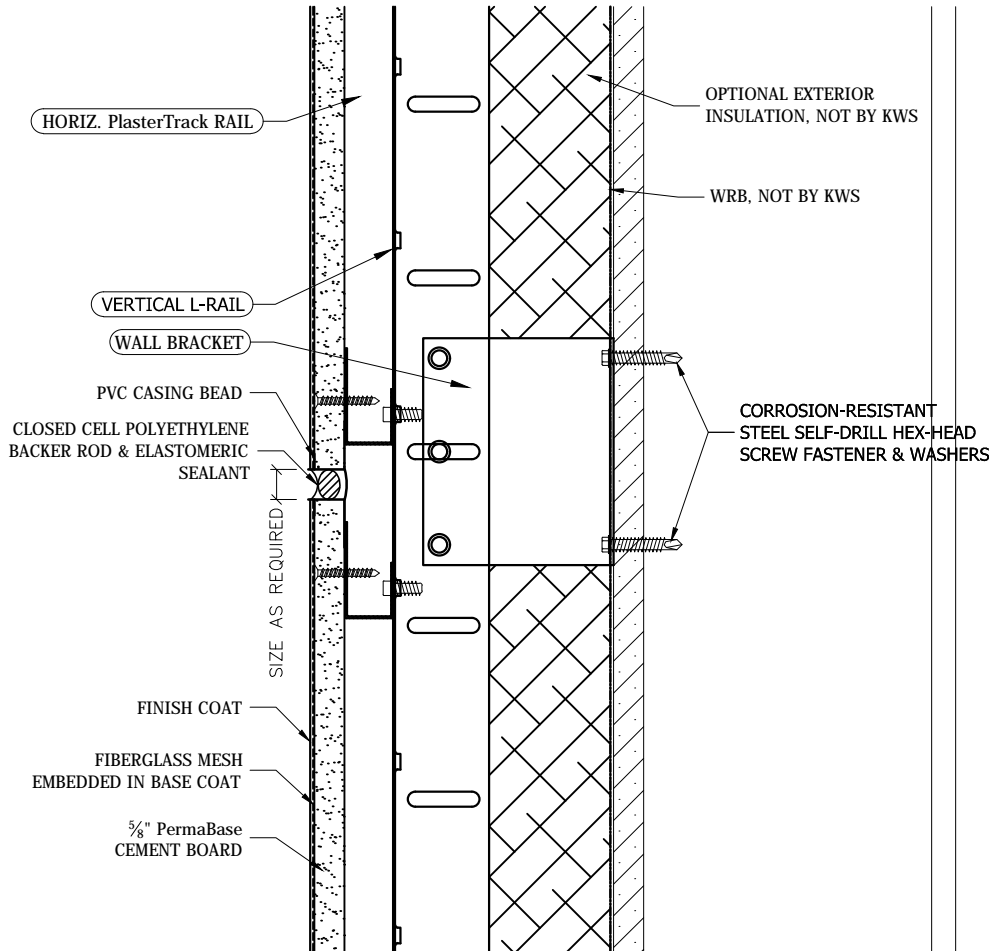


STUCCO with PlasterTrack™

GUIDE DETAILS

Revision: September 08, 2010

www.knightwallsystems.com



NOTE:

THESE GUIDELINE DETAILS ARE PROVIDED FOR INFORMATION ONLY AND DO NOT REPLACE THE SERVICES OF A REGISTERED DESIGN PROFESSIONAL.

For multi-cladding transition details, or to download the CAD version of these details, please visit us online at www.knightwallsystems.com

© Knight Wall Systems
Deer Park, WA - 509.262.0104
PATENT PENDING

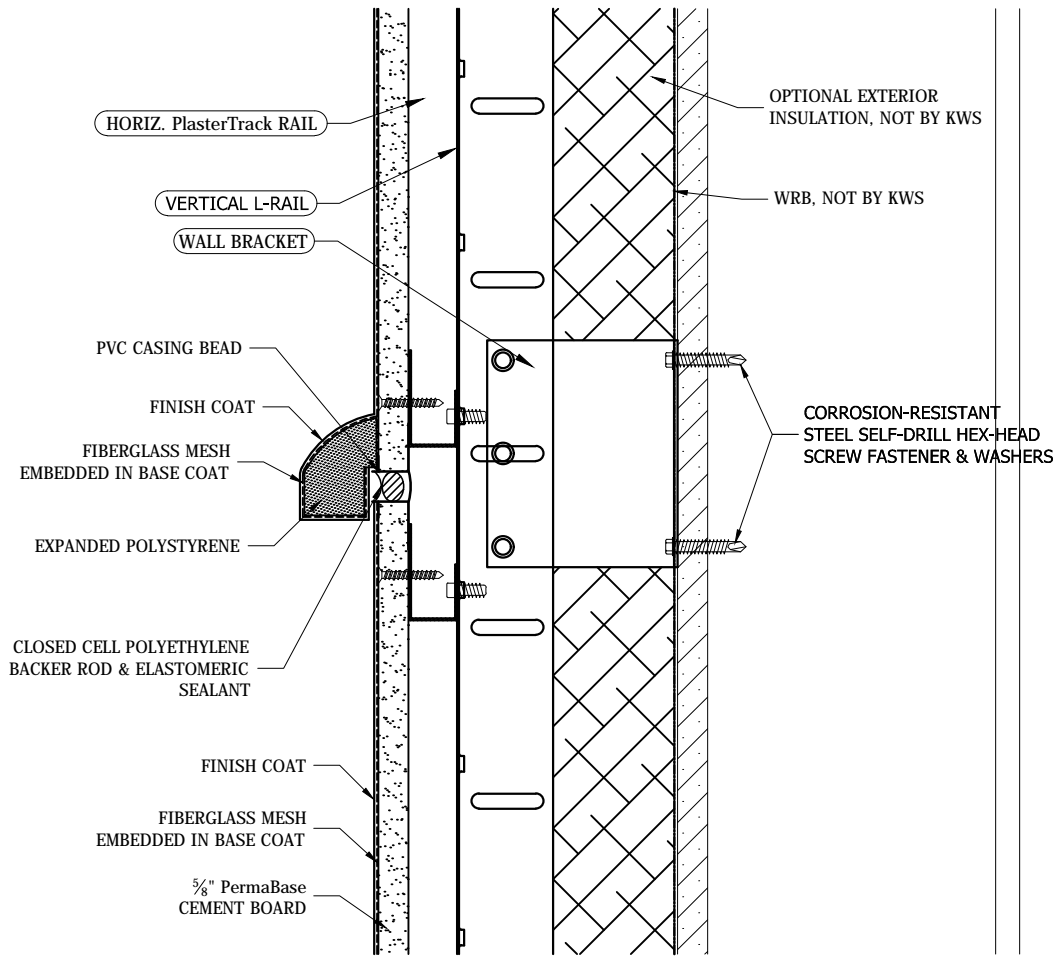


STUCCO with PlasterTrack™

GUIDE DETAILS

Revision: September 08, 2010

www.knightwallsystems.com



NOTE:

THESE GUIDELINE DETAILS ARE PROVIDED FOR INFORMATION ONLY AND DO NOT REPLACE THE SERVICES OF A REGISTERED DESIGN PROFESSIONAL.

For multi-cladding transition details, or to download the CAD version of these details, please visit us online at www.knightwallsystems.com

© Knight Wall Systems
Deer Park, WA - 509.262.0104
PATENT PENDING

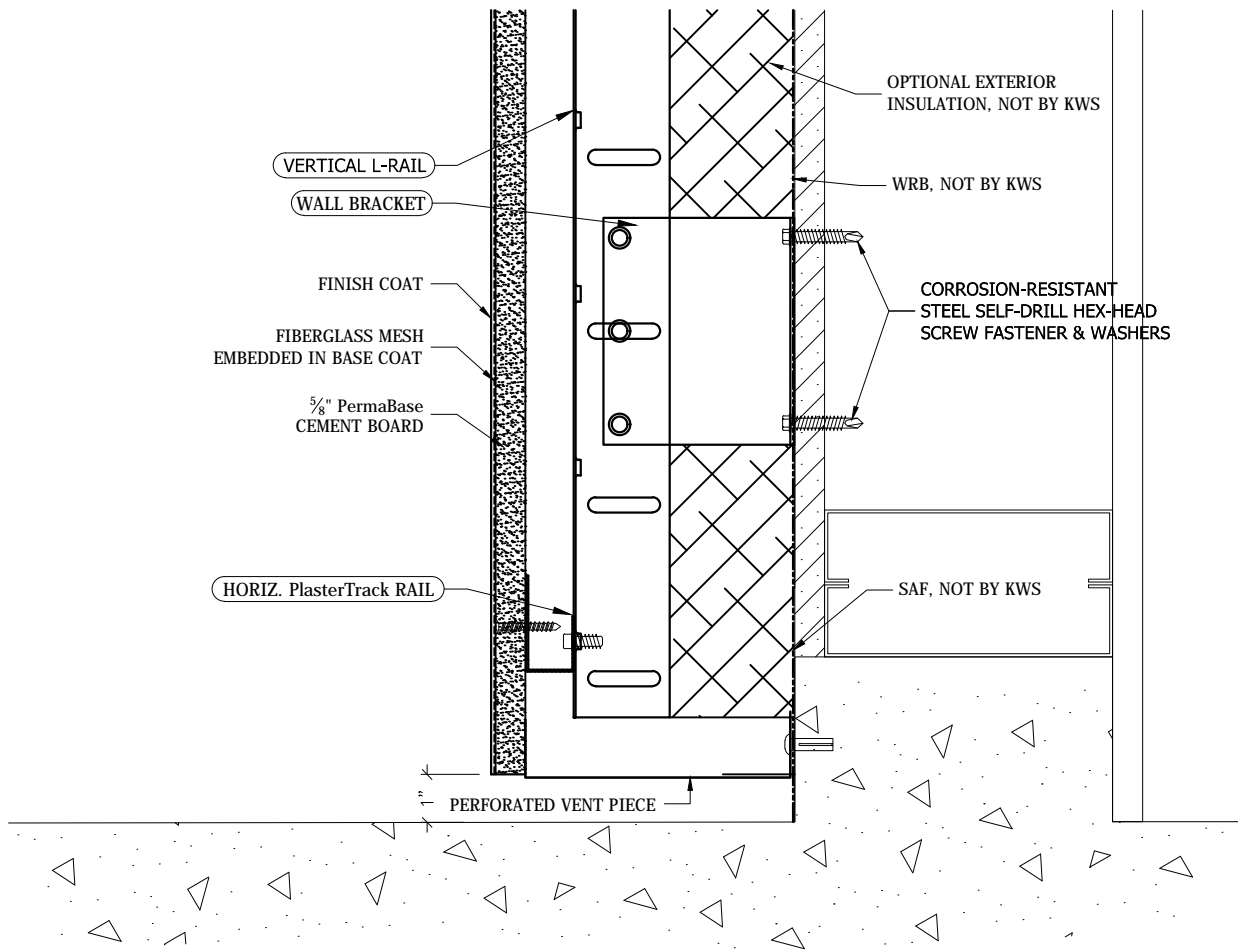


STUCCO with PlasterTrack™

GUIDE DETAILS

Revision: September 08, 2010

www.knightwallsystems.com



NOTE:
THESE GUIDELINE DETAILS ARE PROVIDED FOR INFORMATION ONLY AND DO NOT REPLACE THE SERVICES OF A REGISTERED DESIGN PROFESSIONAL.

For multi-cladding transition details, or to download the CAD version of these details, please visit us online at www.knightwallsystems.com

© Knight Wall Systems
Deer Park, WA - 509.262.0104
PATENT PENDING

05 BASE OF WALL

Scale: 3" = 1'-0" Drawn by: BN

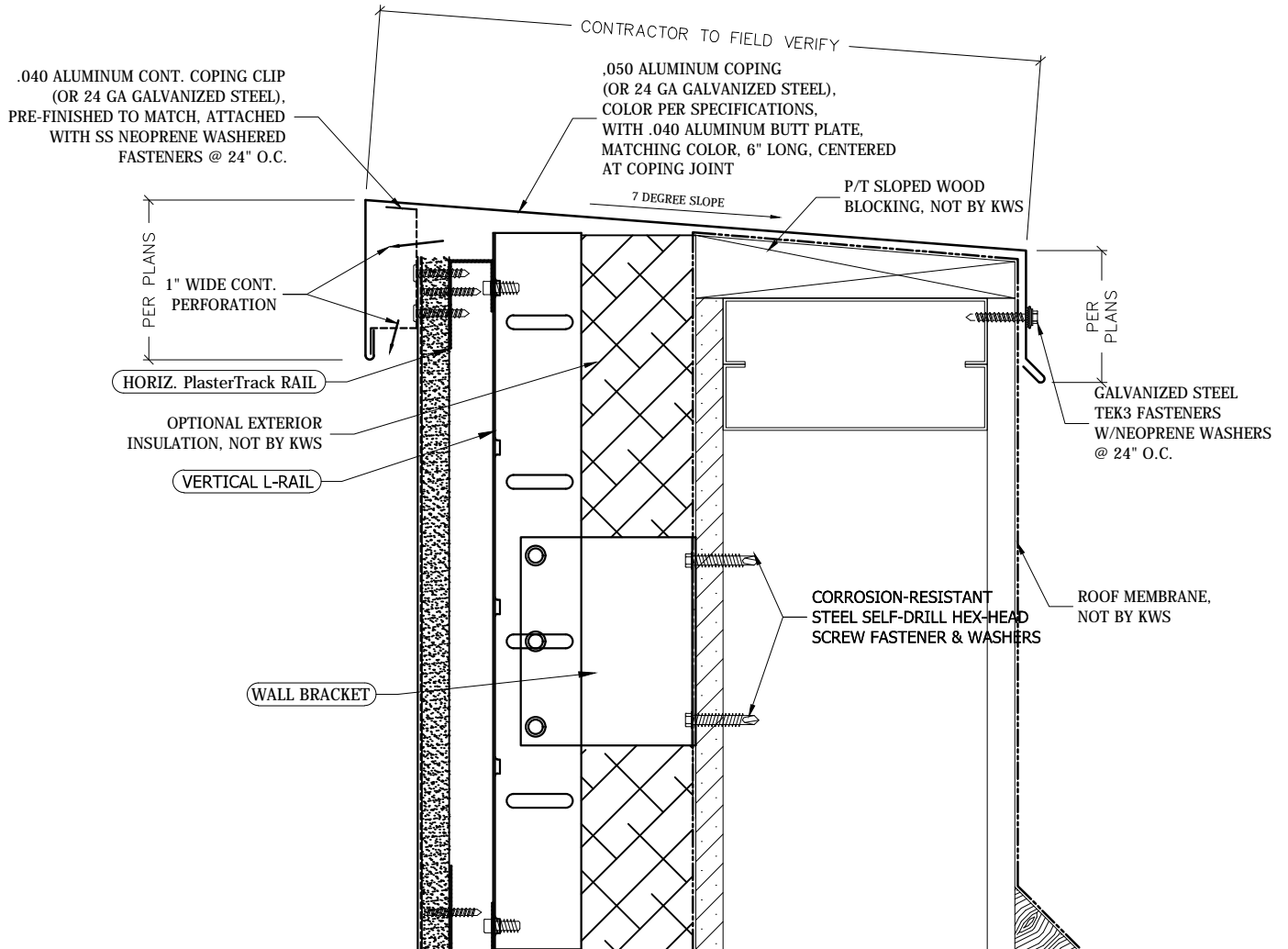


STUCCO with PlasterTrack™

GUIDE DETAILS

Revision: September 08, 2010

www.knightwallsystems.com



NOTE:
 THESE GUIDELINE DETAILS ARE PROVIDED FOR INFORMATION ONLY AND DO NOT REPLACE THE SERVICES OF A REGISTERED DESIGN PROFESSIONAL.

For multi-cladding transition details, or to download the CAD version of these details, please visit us online at www.knightwallsystems.com

© Knight Wall Systems
 Deer Park, WA - 509.262.0104
 PATENT PENDING

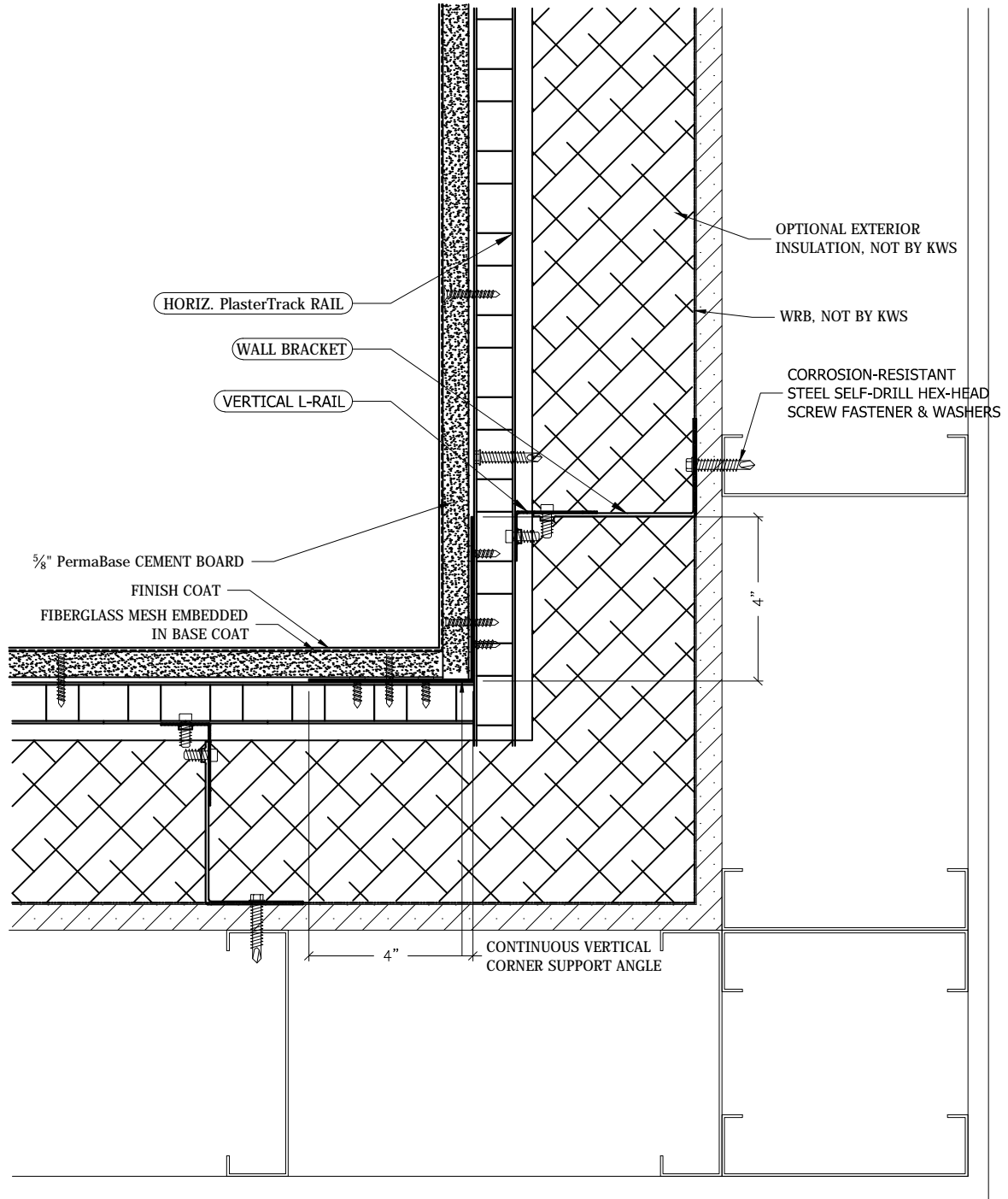


STUCCO with PlasterTrack™

GUIDE DETAILS

Revision: September 08, 2010

www.knightwallsystems.com



NOTE:
THESE GUIDELINE DETAILS ARE PROVIDED FOR INFORMATION ONLY AND DO NOT REPLACE THE SERVICES OF A REGISTERED DESIGN PROFESSIONAL.

For multi-cladding transition details, or to download the CAD version of these details, please visit us online at www.knightwallsystems.com

© Knight Wall Systems
Deer Park, WA - 509.262.0104
PATENT PENDING

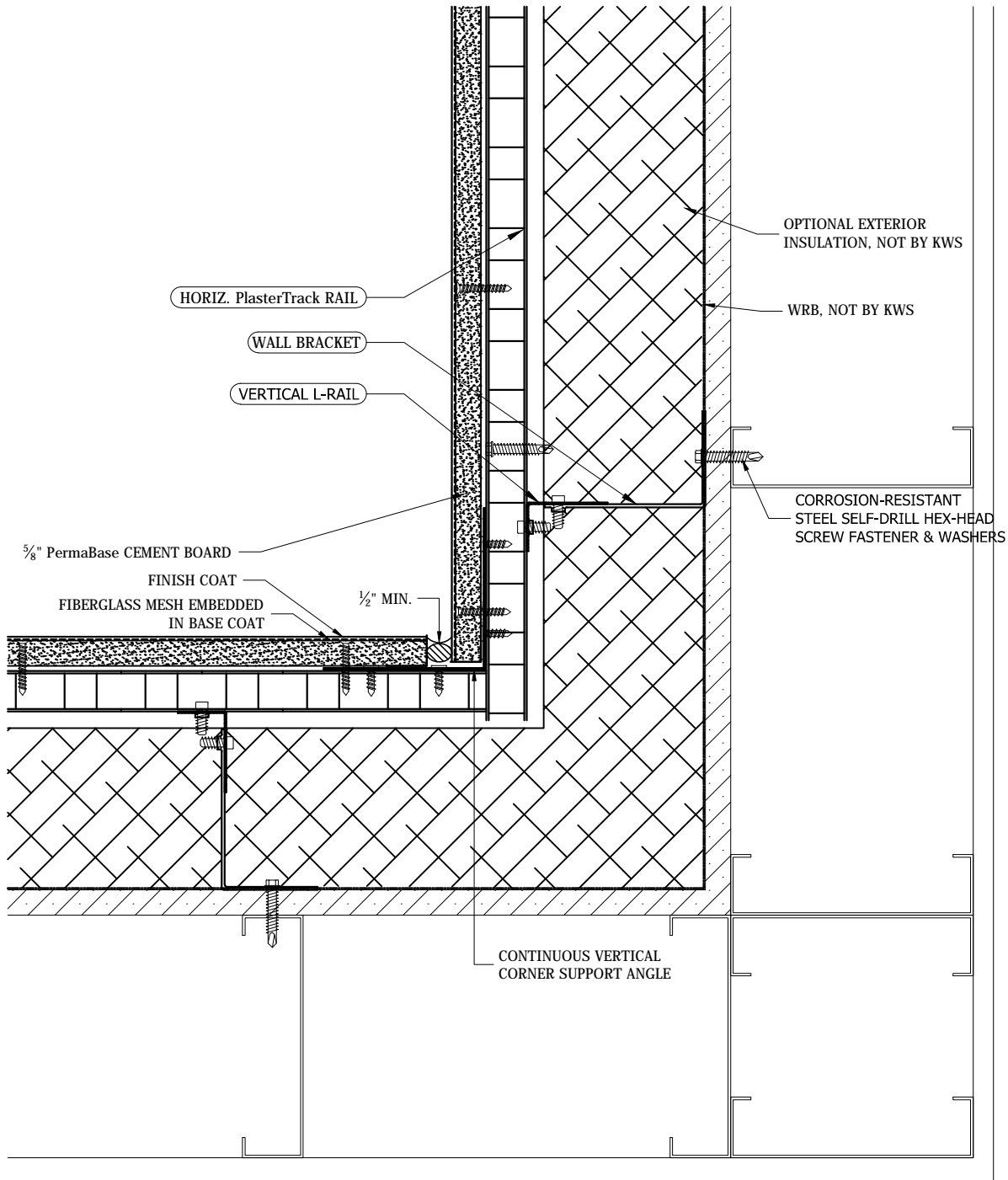


STUCCO with PlasterTrack™

GUIDE DETAILS

Revision: September 08, 2010

www.knightwallsystems.com



NOTE:
THESE GUIDELINE DETAILS ARE PROVIDED FOR INFORMATION ONLY AND DO NOT REPLACE THE SERVICES OF A REGISTERED DESIGN PROFESSIONAL.

For multi-cladding transition details, or to download the CAD version of these details, please visit us online at www.knightwallsystems.com

© Knight Wall Systems
Deer Park, WA - 509.262.0104
PATENT PENDING

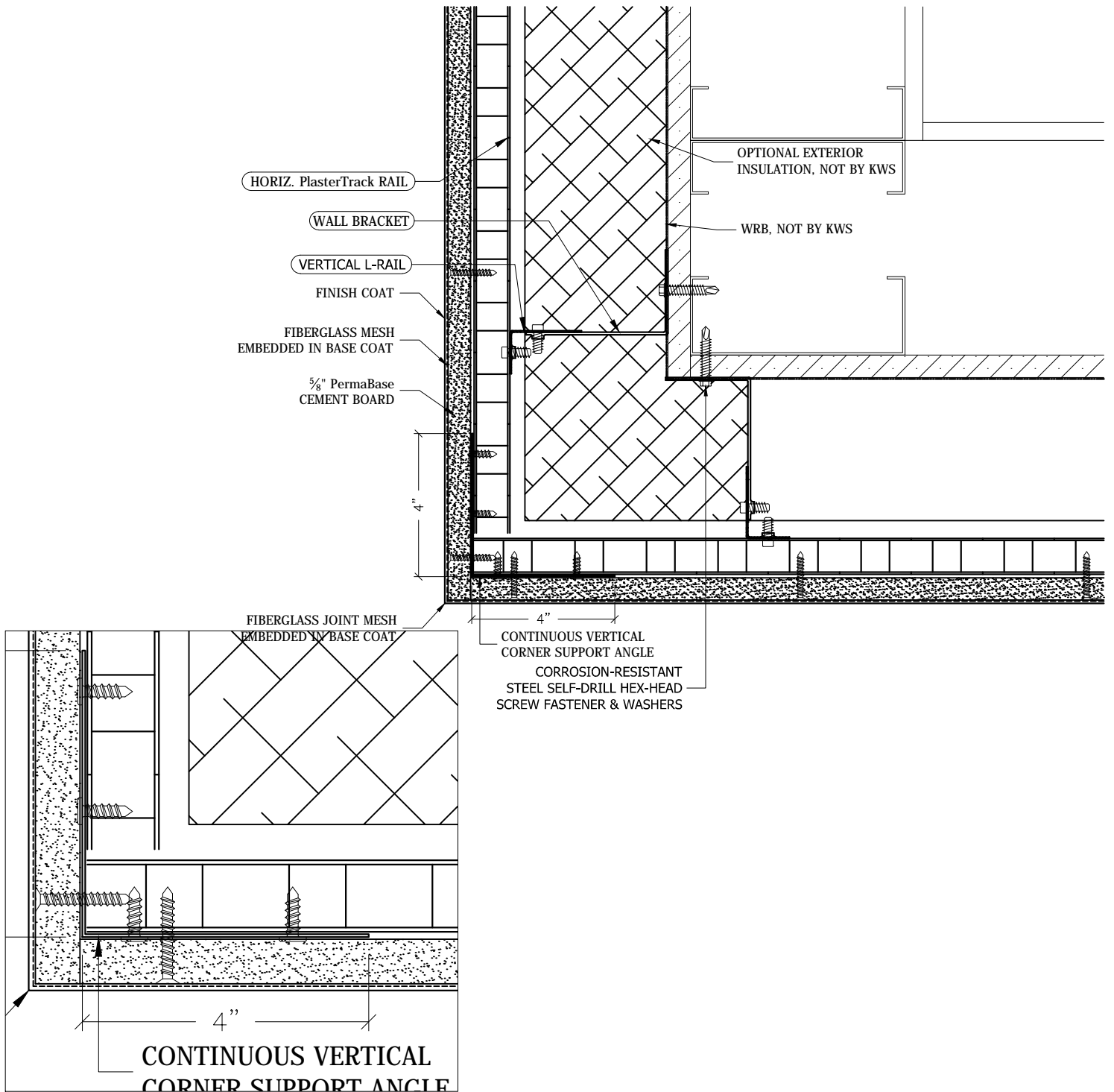


STUCCO with PlasterTrack™

GUIDE DETAILS

Revision: September 08, 2010

www.knightwallsystems.com



NOTE:
 THESE GUIDELINE DETAILS ARE PROVIDED FOR INFORMATION ONLY AND DO NOT REPLACE THE SERVICES OF A REGISTERED DESIGN PROFESSIONAL.

For multi-cladding transition details, or to download the CAD version of these details, please visit us online at www.knightwallsystems.com

© Knight Wall Systems
 Deer Park, WA - 509.262.0104
 PATENT PENDING

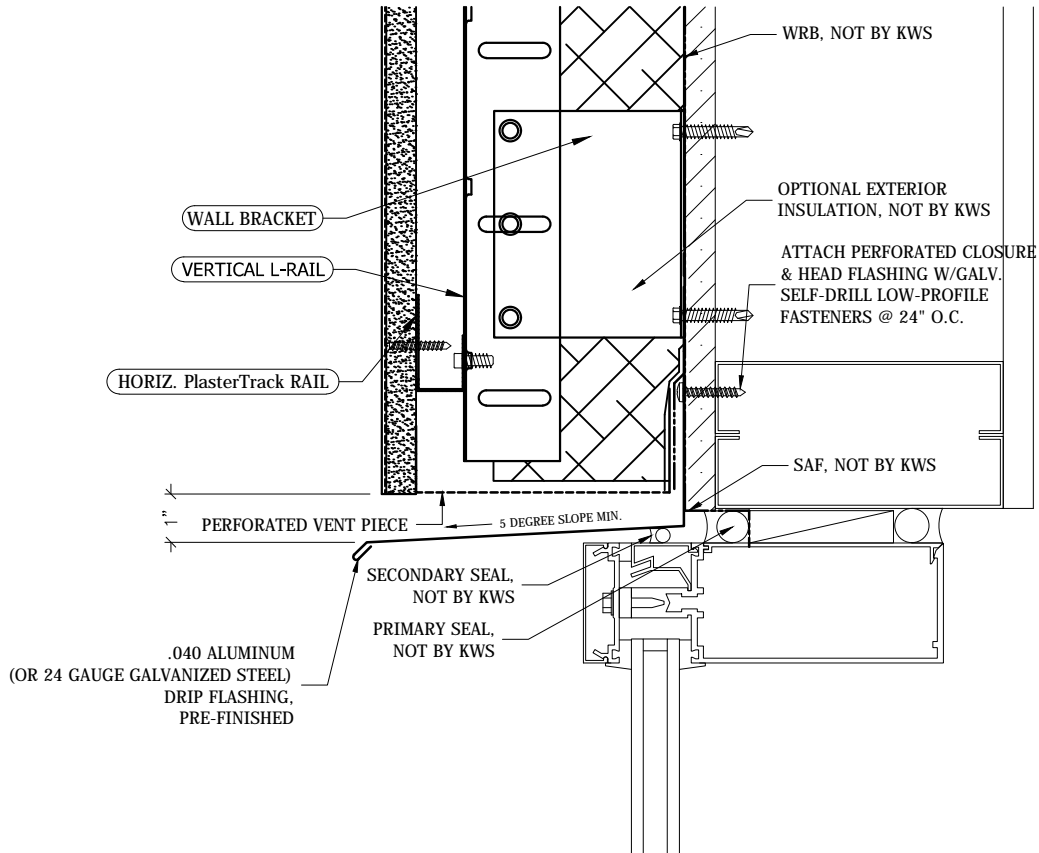


STUCCO with PlasterTrack™

GUIDE DETAILS

Revision: September 08, 2010

www.knightwallsystems.com



NOTE:

THESE GUIDELINE DETAILS ARE PROVIDED FOR INFORMATION ONLY AND DO NOT REPLACE THE SERVICES OF A REGISTERED DESIGN PROFESSIONAL.

For multi-cladding transition details, or to download the CAD version of these details, please visit us online at www.knightwallsystems.com

© Knight Wall Systems
Deer Park, WA - 509.262.0104
PATENT PENDING

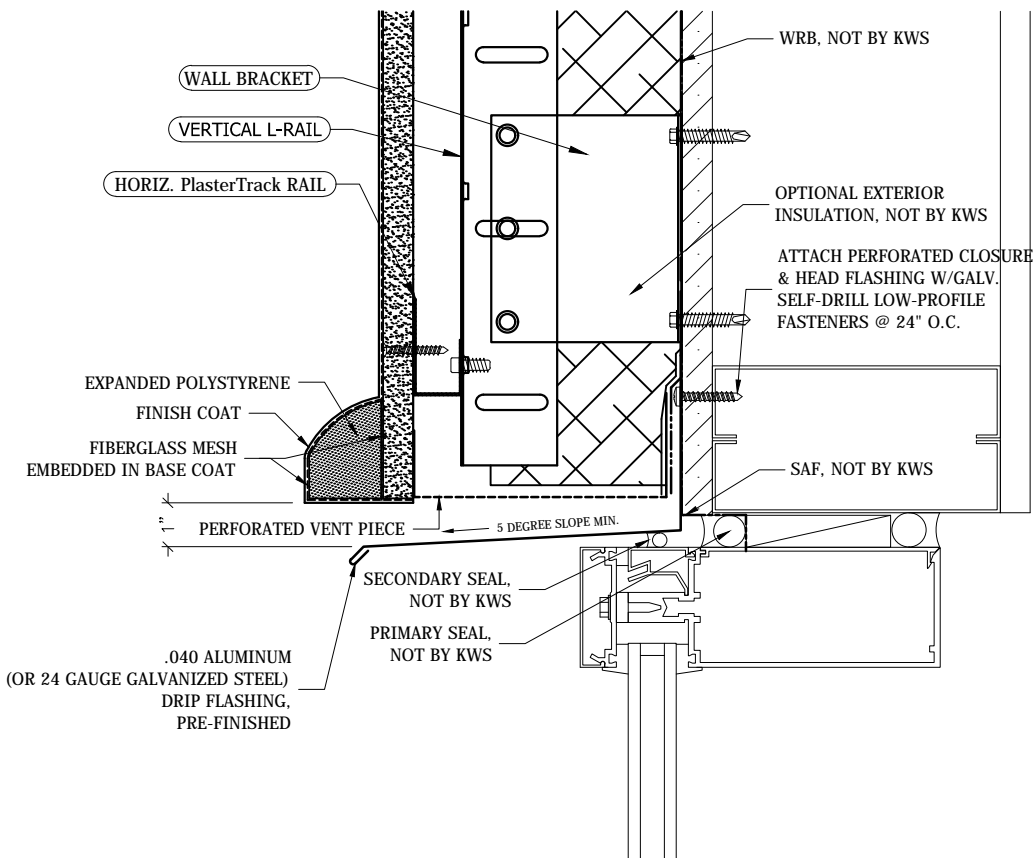


STUCCO with PlasterTrack™

GUIDE DETAILS

Revision: September 08, 2010

www.knightwallsystems.com



NOTE:

THESE GUIDELINE DETAILS ARE PROVIDED FOR INFORMATION ONLY AND DO NOT REPLACE THE SERVICES OF A REGISTERED DESIGN PROFESSIONAL.

For multi-cladding transition details, or to download the CAD version of these details, please visit us online at www.knightwallsystems.com

© Knight Wall Systems
Deer Park, WA - 509.262.0104
PATENT PENDING

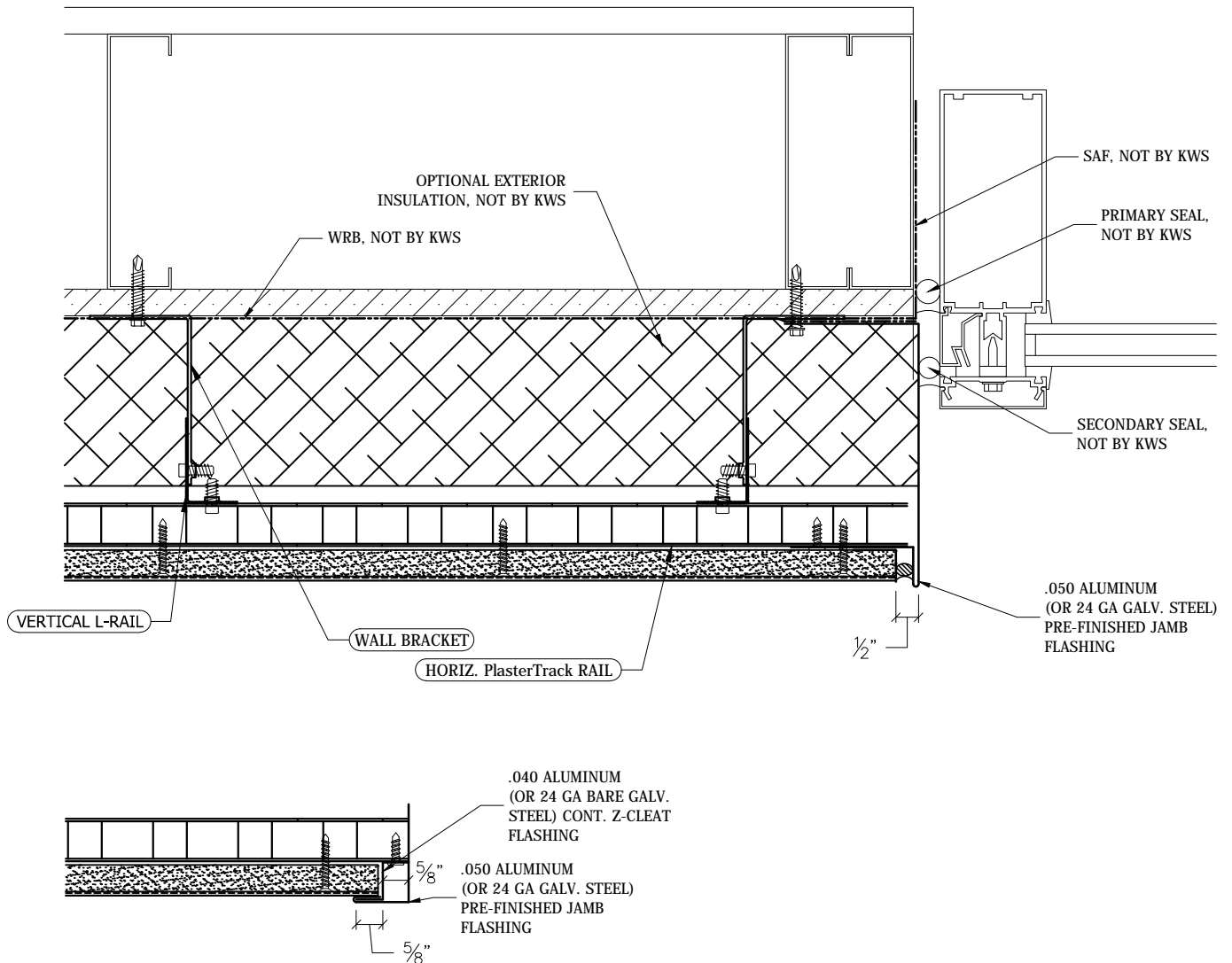


STUCCO with PlasterTrack™

GUIDE DETAILS

Revision: September 08, 2010

www.knightwallsystems.com



12 ALTERNATE WINDOW JAMB

Scale: 3"=1'

NOTE:
THESE GUIDELINE DETAILS ARE PROVIDED FOR INFORMATION ONLY AND DO NOT REPLACE THE SERVICES OF A REGISTERED DESIGN PROFESSIONAL.

For multi-cladding transition details, or to download the CAD version of these details, please visit us online at www.knightwallsystems.com

© Knight Wall Systems
Deer Park, WA - 509.262.0104
PATENT PENDING

12 WINDOW JAMB - METAL TRIM

Scale: 3" = 1'-0" Drawn by: BN

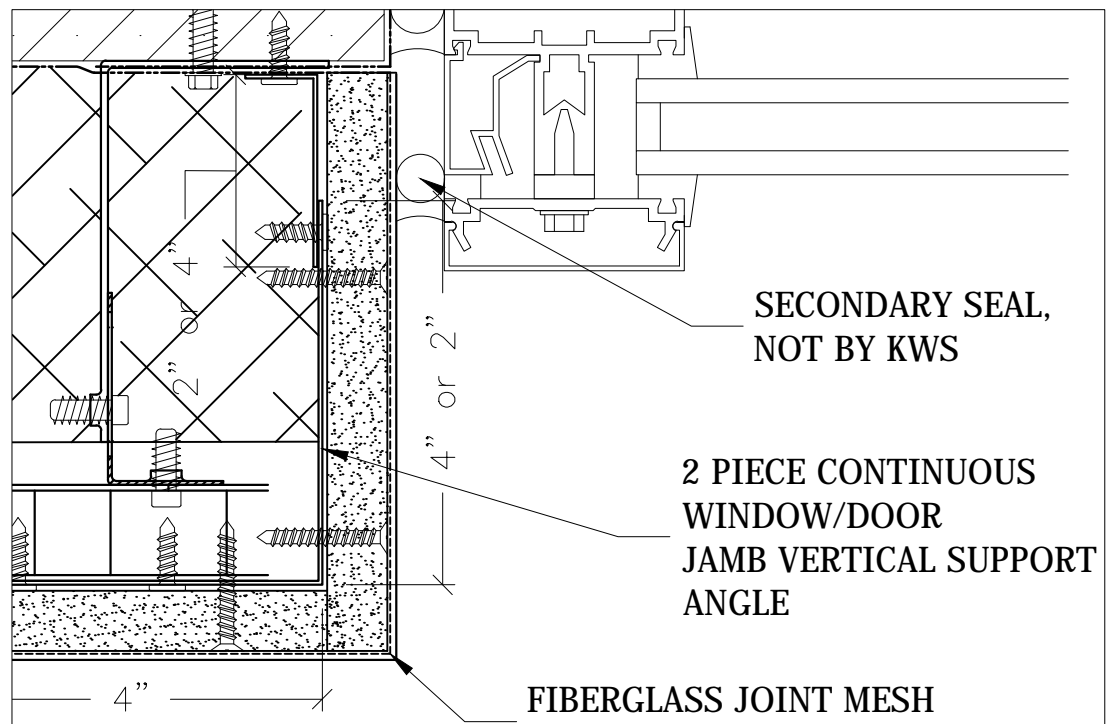
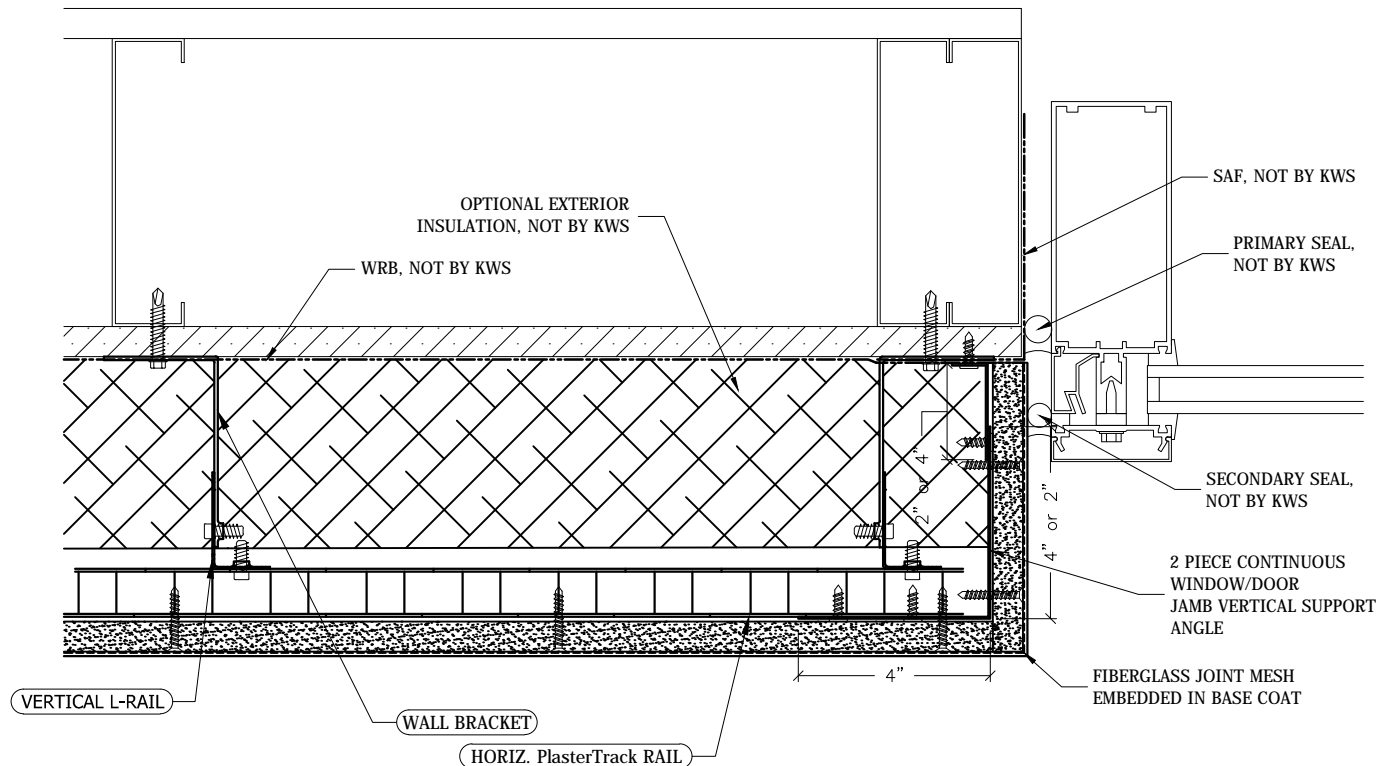


STUCCO with PlasterTrack™

GUIDE DETAILS

Revision: September 08, 2010

www.knightwallsystems.com



NOTE:
THESE GUIDELINE DETAILS ARE PROVIDED FOR INFORMATION ONLY AND DO NOT REPLACE THE SERVICES OF A REGISTERED DESIGN PROFESSIONAL.

For multi-cladding transition details, or to download the CAD version of these details, please visit us online at www.knightwallsystems.com

© Knight Wall Systems
Deer Park, WA - 509.262.0104
PATENT PENDING

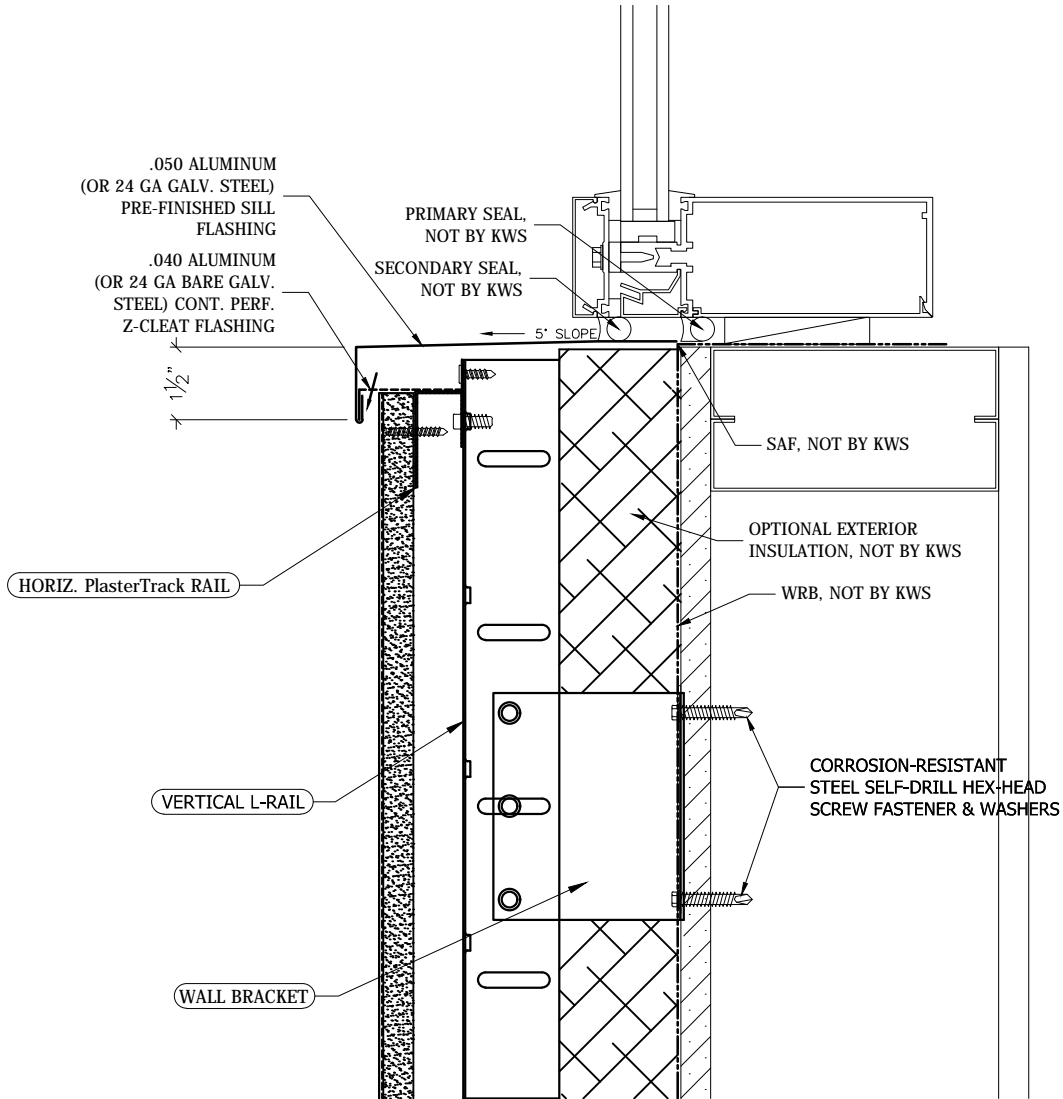


STUCCO with PlasterTrack™

GUIDE DETAILS

Revision: September 08, 2010

www.knightwallsystems.com



NOTE:

THESE GUIDELINE DETAILS ARE PROVIDED FOR INFORMATION ONLY AND DO NOT REPLACE THE SERVICES OF A REGISTERED DESIGN PROFESSIONAL.

For multi-cladding transition details, or to download the CAD version of these details, please visit us online at www.knightwallsystems.com

© Knight Wall Systems
Deer Park, WA - 509.262.0104
PATENT PENDING

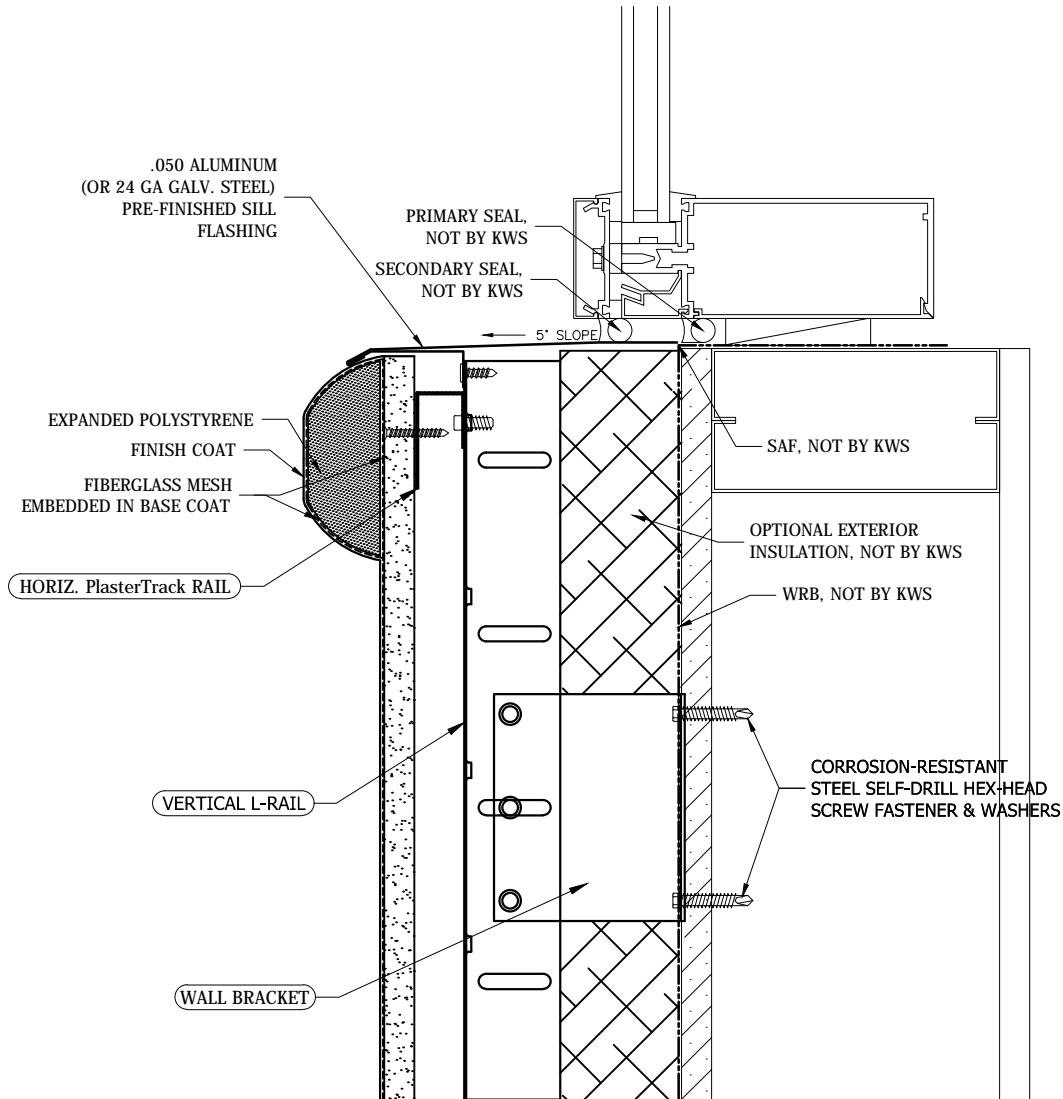


STUCCO with PlasterTrack™

GUIDE DETAILS

Revision: September 08, 2010

www.knightwallsystems.com



***THIS DETAIL IS NOT RECOMMENDED FOR WINDOWS WIDER THAN 4'-0" DUE TO LACK OF APPROPRIATE VENTING AT SILL**

NOTE:

THESE GUIDELINE DETAILS ARE PROVIDED FOR INFORMATION ONLY AND DO NOT REPLACE THE SERVICES OF A REGISTERED DESIGN PROFESSIONAL.

For multi-cladding transition details, or to download the CAD version of these details, please visit us online at www.knightwallsystems.com

© Knight Wall Systems
Deer Park, WA - 509.262.0104
PATENT PENDING

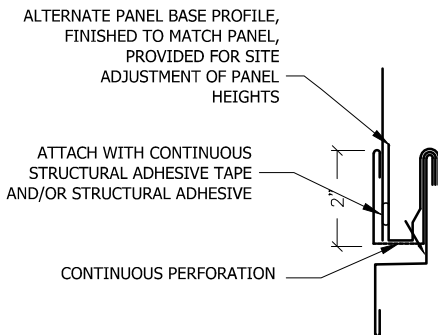
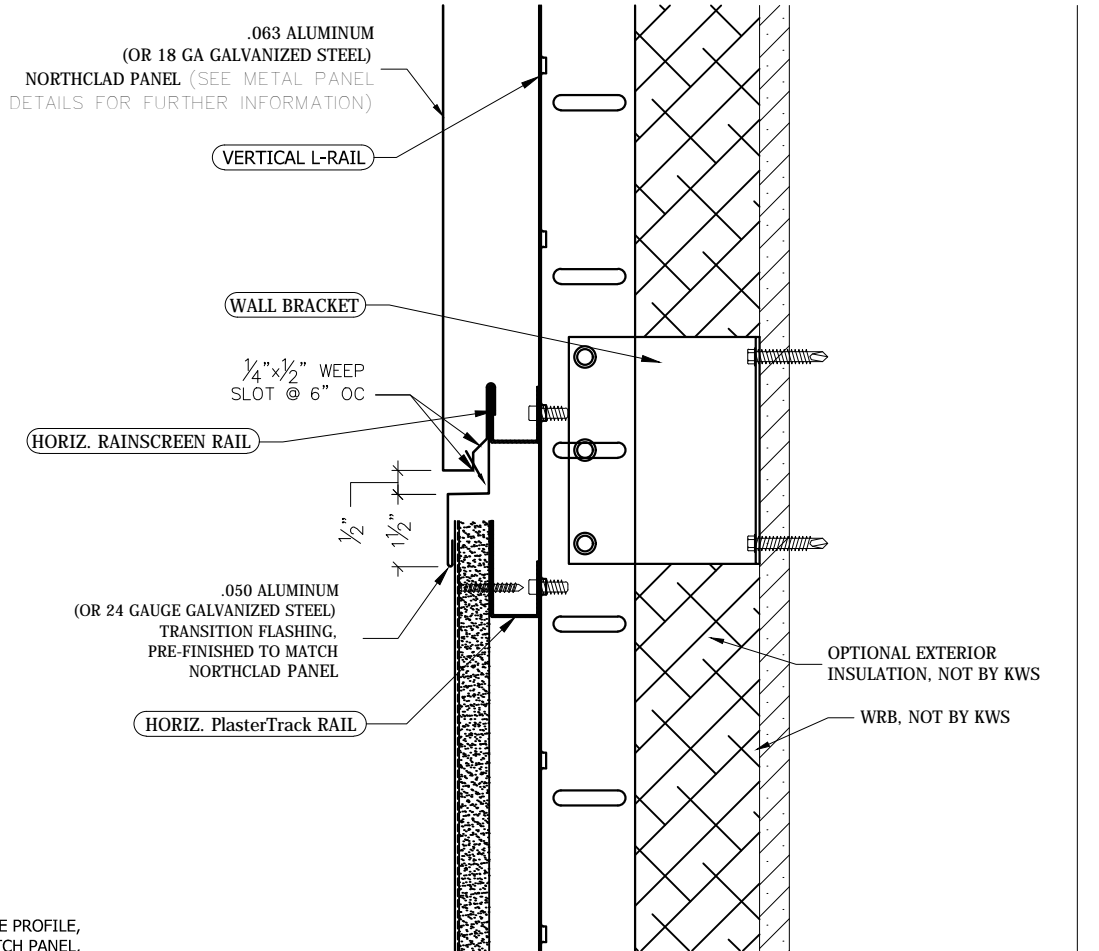


STUCCO with PlasterTrack™

GUIDE DETAILS

Revision: September 08, 2010

www.knightwallsystems.com



16 ALTERNATE PANEL BASE
Scale: 3" = 1'

NOTE:
THESE GUIDELINE DETAILS ARE PROVIDED FOR INFORMATION ONLY AND DO NOT REPLACE THE SERVICES OF A REGISTERED DESIGN PROFESSIONAL.

For multi-cladding transition details, or to download the CAD version of these details, please visit us online at www.knightwallsystems.com

© Knight Wall Systems
Deer Park, WA - 509.262.0104
PATENT PENDING

16 METAL/STUCCO MID-WALL TRASITION
Scale: 3" = 1'-0" Drawn by: BN

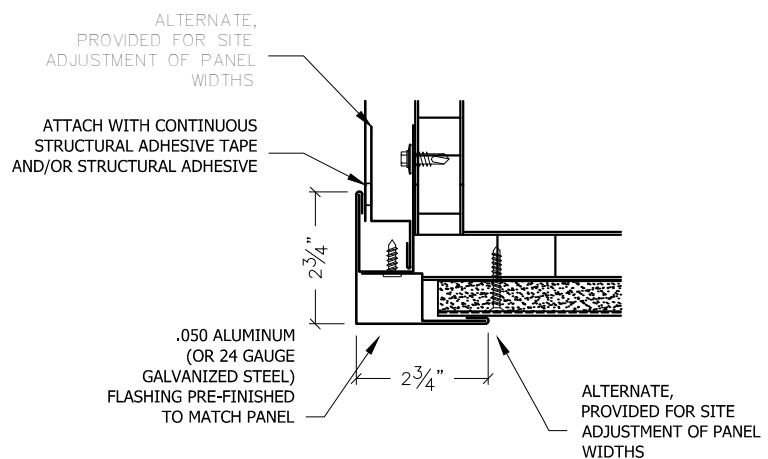
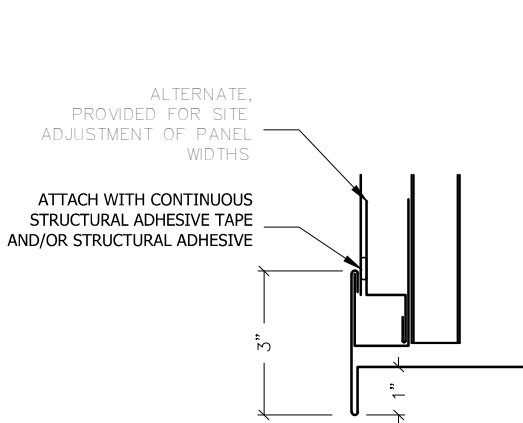
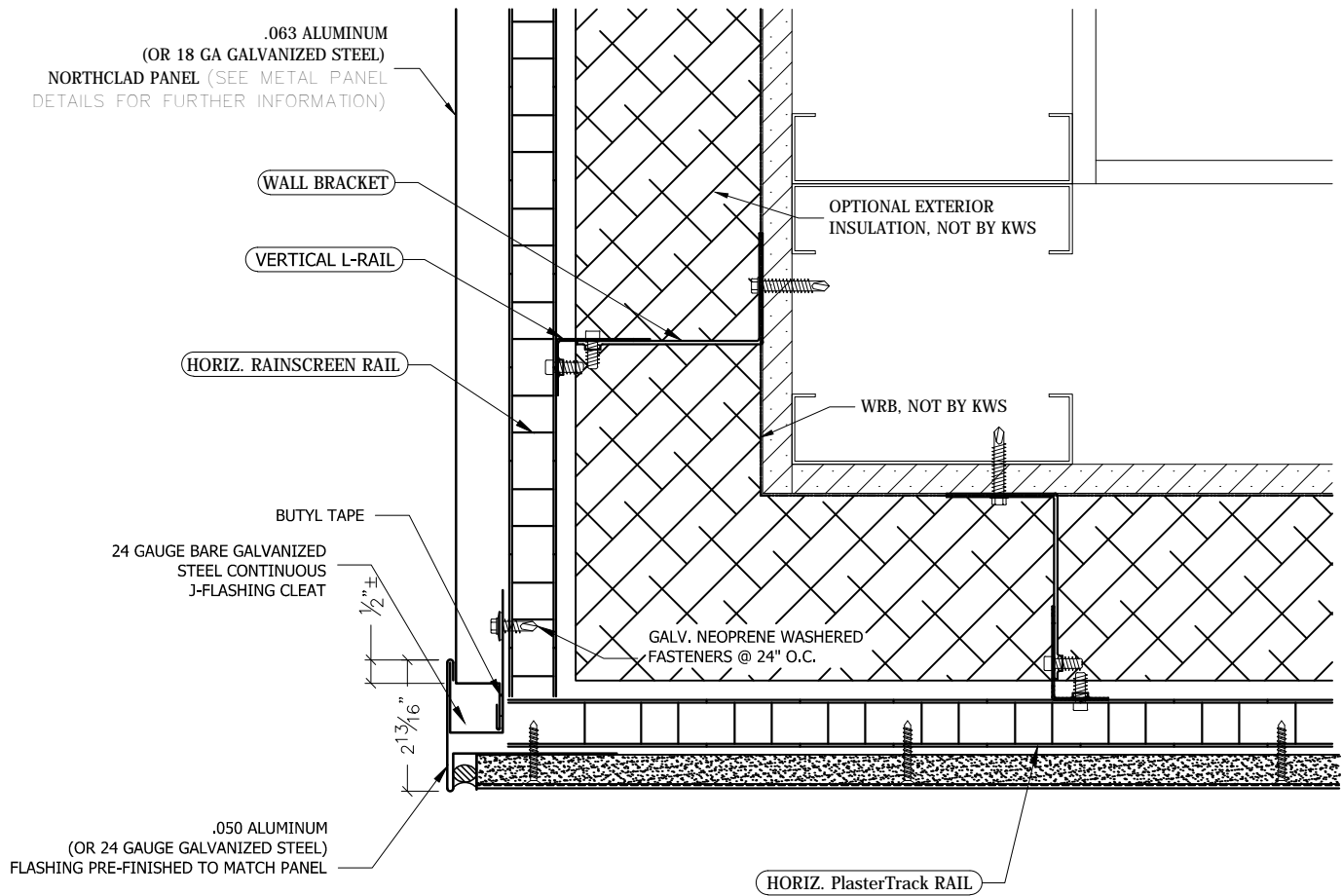


STUCCO with PlasterTrack™

GUIDE DETAILS

Revision: September 08, 2010

www.knightwallsystems.com



17 ALTERNATE O.S.C.

Scale: 3"=1'

NOTE:
THESE GUIDELINE DETAILS ARE PROVIDED FOR INFORMATION ONLY AND DO NOT REPLACE THE SERVICES OF A REGISTERED DESIGN PROFESSIONAL.

For multi-cladding transition details, or to download the CAD version of these details, please visit us online at www.knightwallsystems.com

© Knight Wall Systems
Deer Park, WA - 509.262.0104
PATENT PENDING

17 METAL/STUCCO O.S.C. TRASITION

Scale: 3" = 1'-0" Drawn by: BN

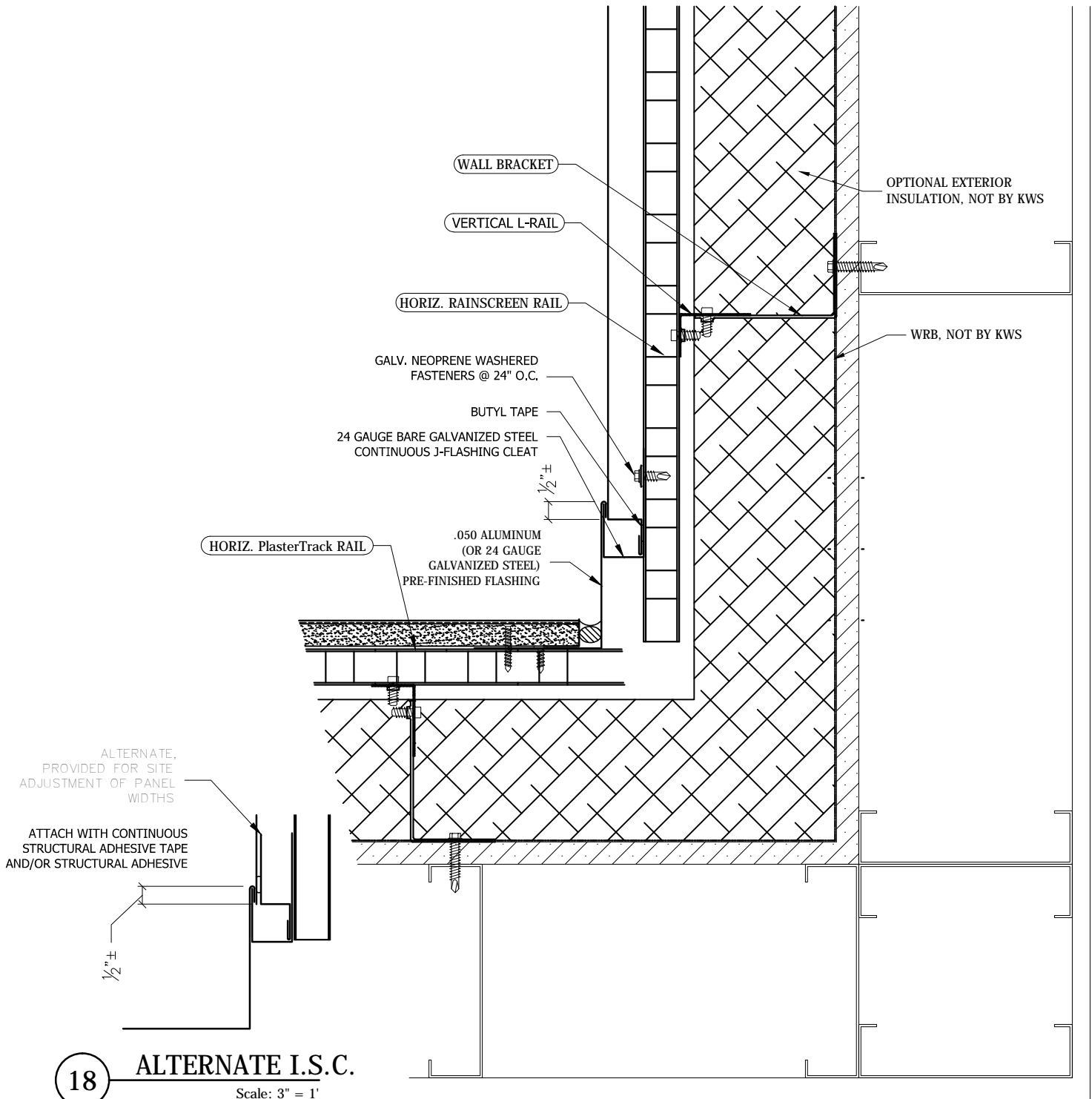


STUCCO with PlasterTrack™

GUIDE DETAILS

Revision: September 08, 2010

www.knightwallsystems.com



18 ALTERNATE I.S.C. Scale: 3" = 1'

NOTE:
 THESE GUIDELINE DETAILS ARE PROVIDED FOR INFORMATION ONLY AND DO NOT REPLACE THE SERVICES OF A REGISTERED DESIGN PROFESSIONAL.
 For multi-cladding transition details, or to download the CAD version of these details, please visit us online at www.knightwallsystems.com
 © Knight Wall Systems
 Deer Park, WA - 509.262.0104
 PATENT PENDING

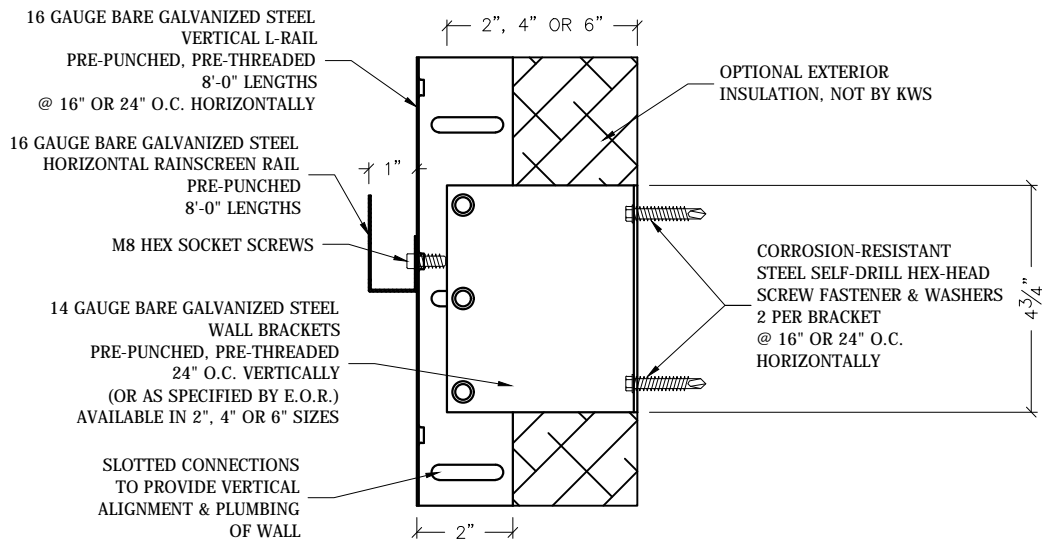


STUCCO with PlasterTrack™

GUIDE DETAILS

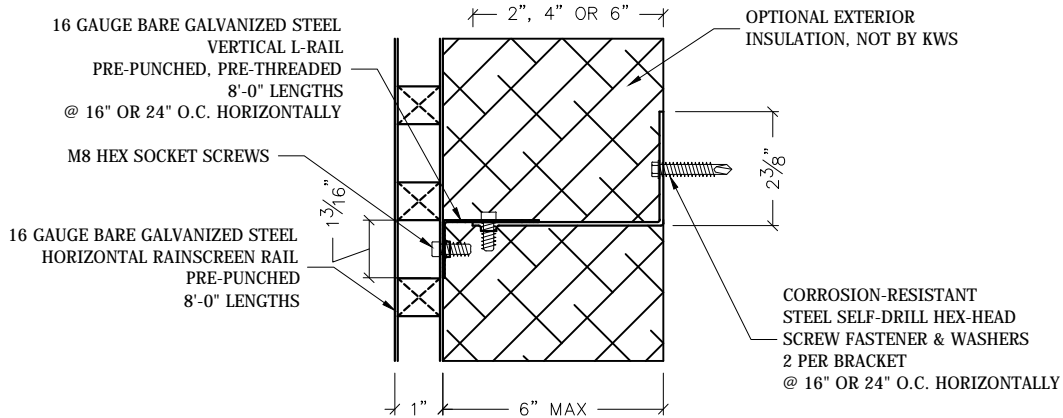
Revision: September 08, 2010

www.knightwallsystems.com



SECTION VIEW

Scale: 3" = 1'



PLAN VIEW

Scale: 3" = 1'

NOTE:

THESE GUIDELINE DETAILS ARE PROVIDED FOR INFORMATION ONLY AND DO NOT REPLACE THE SERVICES OF A REGISTERED DESIGN PROFESSIONAL.

For multi-cladding transition details, or to download the CAD version of these details, please visit us online at www.knightwallsystems.com

© Knight Wall Systems
Deer Park, WA - 509.262.0104
PATENT PENDING

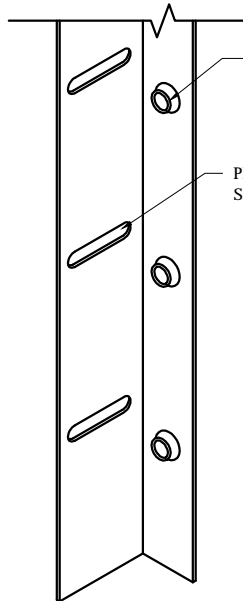
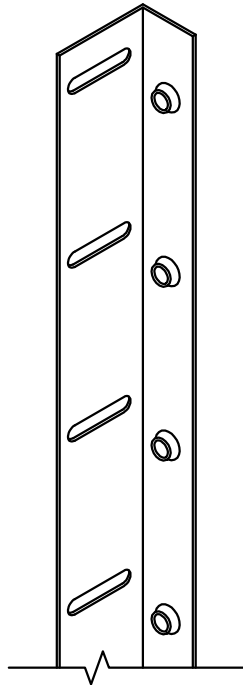


STUCCO with PlasterTrack™

GUIDE DETAILS

Revision: September 08, 2010

www.knightwallsystems.com

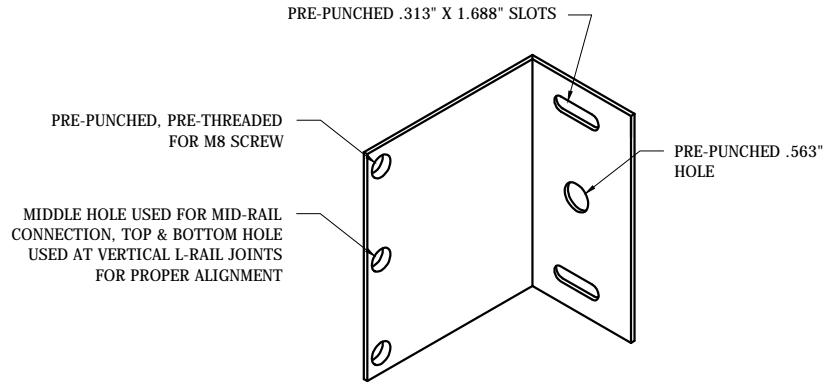


PRE-PUNCHED & PRE-THREADED FOR M8 SCREW @ 3.62" O.C.

PRE-PUNCHED 1.183" X .318" SLOT @ 3.62" O.C.

2 VERTICAL L-RAIL

Scale: 3" = 1'



PRE-PUNCHED .313" X 1.688" SLOTS

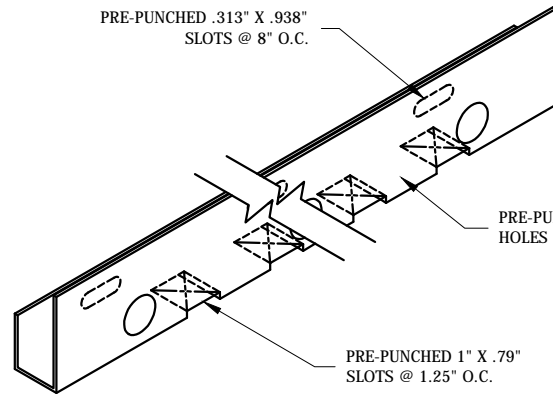
PRE-PUNCHED, PRE-THREADED FOR M8 SCREW

PRE-PUNCHED .563" HOLE

MIDDLE HOLE USED FOR MID-RAIL CONNECTION, TOP & BOTTOM HOLE USED AT VERTICAL L-RAIL JOINTS FOR PROPER ALIGNMENT

1 WALL BRACKET

Scale: 3" = 1'



PRE-PUNCHED .313" X .938" SLOTS @ 8" O.C.

PRE-PUNCHED .75" HOLES @ 8" O.C.

PRE-PUNCHED 1" X .79" SLOTS @ 1.25" O.C.

3 PlasterTrack

Scale: 3" = 1'

NOTE:

THESE GUIDELINE DETAILS ARE PROVIDED FOR INFORMATION ONLY AND DO NOT REPLACE THE SERVICES OF A REGISTERED DESIGN PROFESSIONAL.

For multi-cladding transition details, or to download the CAD version of these details, please visit us online at www.knightwallsystems.com

© Knight Wall Systems
Deer Park, WA - 509.262.0104
PATENT PENDING



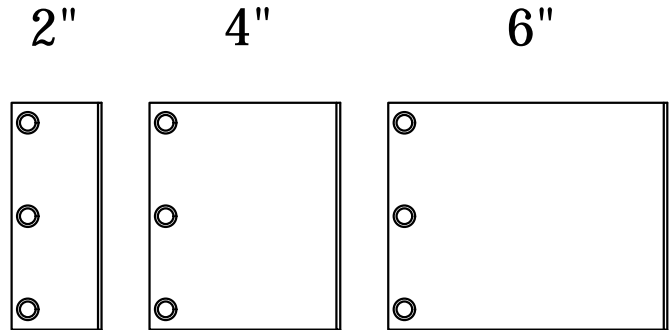
STUCCO with PlasterTrack™

GUIDE DETAILS

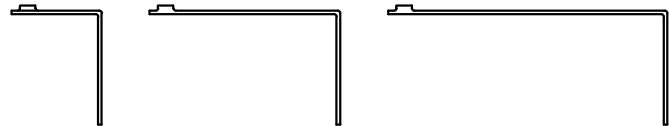
Revision: September 08, 2010

www.knightwallsystems.com

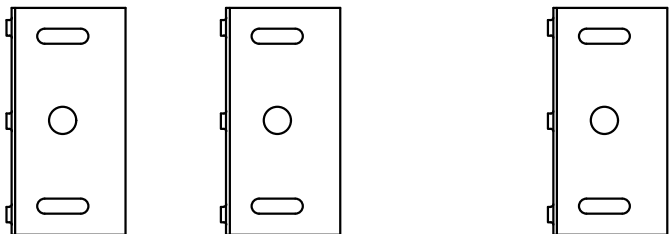
SIDE (SECTION) VIEW



PROFILE (PLAN) VIEW



FRONT (ELEVATION) VIEW



NOTE:

THESE GUIDELINE DETAILS ARE PROVIDED FOR INFORMATION ONLY AND DO NOT REPLACE THE SERVICES OF A REGISTERED DESIGN PROFESSIONAL.

For multi-cladding transition details, or to download the CAD version of these details, please visit us online at www.knightwallsystems.com

© Knight Wall Systems
Deer Park, WA - 509.262.0104
PATENT PENDING