



# BRICK PANELS with STOFIX®

GUIDE DETAILS

Revision: December 08, 2010

[www.knightwallsystems.com](http://www.knightwallsystems.com)

TYPICAL HORIZONTAL JOINT	1A	StoneSheets/METAL MID-WALL TRANSITION	15
TYPICAL MID-WALL FLASHING	1B	StoneSheets/METAL OUTSIDE CORNER TRANSITION	16
TYPICAL VERTICAL JOINT	02	StoneSheets/METAL INSIDE CORNER TRANSITION	17
TYPICAL BASE OF WALL/SILL	03	BRICK PANEL/CONC./StnSht/TILE HORIZ. TRANS.	18
TYPICAL PARAPET/COPING	4A	STUCCO TO BRICK PANEL HORIZONTAL TRANS.	19
OUTSIDE CORNER	5	BRICK PANEL/CONC./StnSht/TILE VERTICAL TRANS.	20
INSIDE CORNER	6	STUCCO TO BRICK VERTICAL TRANSITION	21
WINDOW HEAD	07	BRICK PANEL/CONC./StnSht/TILE O.S.C. TRANS.	22A
LOUVER HEAD	08	BRICK PANEL/CONC./StnSht/TILE O.S.C. TRANS.	22B
DOOR HEAD	09	STUCCO TO BRICK PANEL O.S.C. TRANSITION	23
WINDOW JAMB w/FLASHING	10A	ALL FACADES TO BRICK PANEL I.S.C. TRANSITION	24
WINDOW JAMB w/STONE	10B	TYPICAL STOFIX ASSEMBLY	25
LOUVER JAMB w/FLASHING	11A	STOFIX COMPONENTS	26
LOUVER JAMB w/STONE	11B	2", 4" & 6" WALL BRACKETS	27
DOOR JAMB w/STONE	12A		
DOOR JAMB - 1 PIECE	12B		
WINDOW SILL	13		
LOUVER SILL	14		

**NOTE:**

THESE GUIDELINE DETAILS ARE PROVIDED FOR INFORMATION ONLY AND DO NOT REPLACE THE SERVICES OF A REGISTERED DESIGN PROFESSIONAL.

For multi-cladding transition details, or to download the CAD version of these details, please visit us online at [www.knightwallsystems.com](http://www.knightwallsystems.com)

© Knight Wall Systems  
Deer Park, WA - 509.262.0104  
PATENT PENDING



## TABLE OF CONTENTS

Scale: N/A

Drawn by: BN

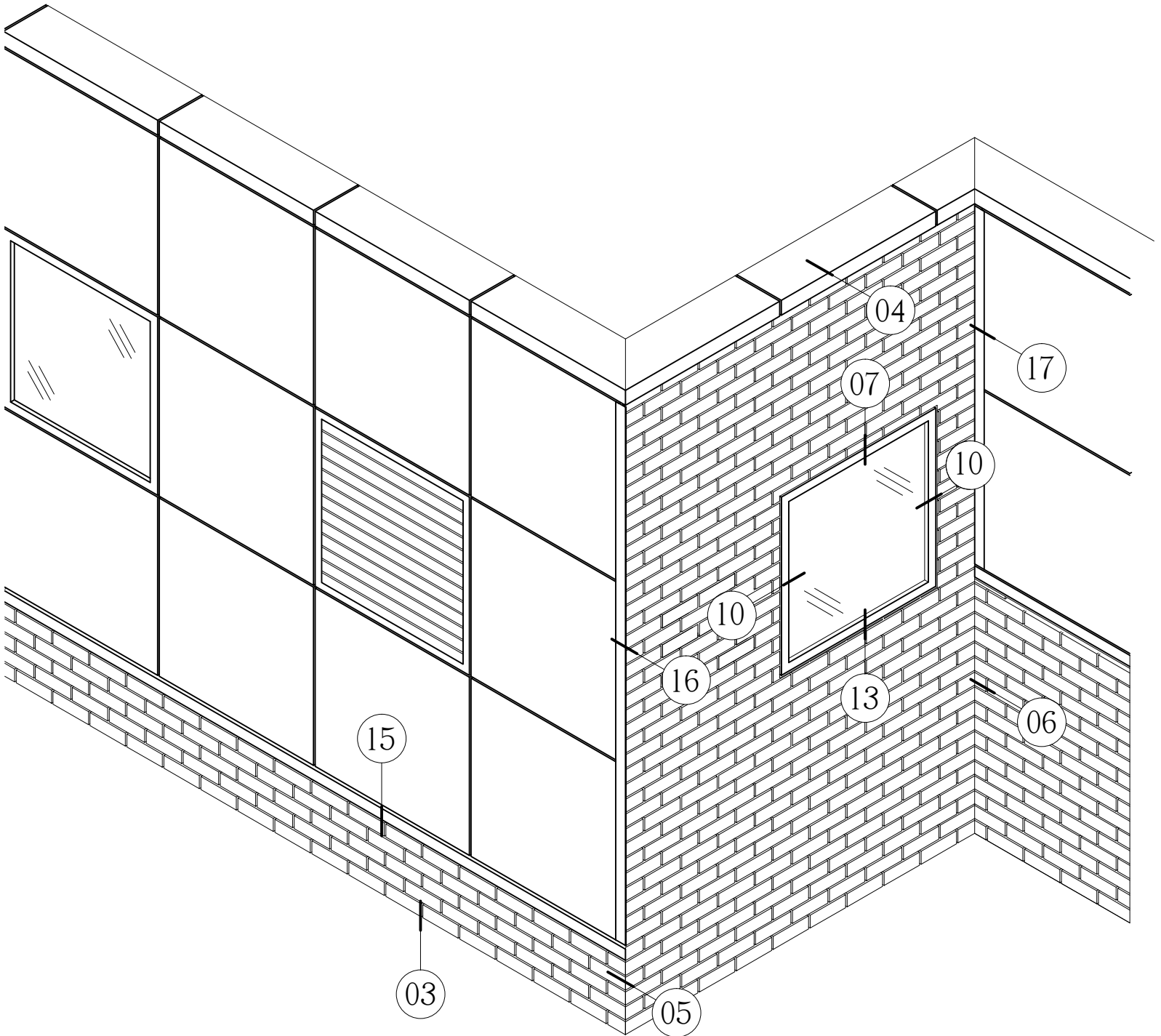


# BRICK PANELS with STOFIX®

GUIDE DETAILS

Revision: December 08, 2010

[www.knightwallsystems.com](http://www.knightwallsystems.com)



**NOTE:**

THESE GUIDELINE DETAILS ARE PROVIDED FOR INFORMATION ONLY AND DO NOT REPLACE THE SERVICES OF A REGISTERED DESIGN PROFESSIONAL.

For multi-cladding transition details, or to download the CAD version of these details, please visit us online at [www.knightwallsystems.com](http://www.knightwallsystems.com)

© Knight Wall Systems  
Deer Park, WA - 509.262.0104  
PATENT PENDING

00

PARTIAL DETAIL REFERENCE

Scale: NTS

Drawn by: BN

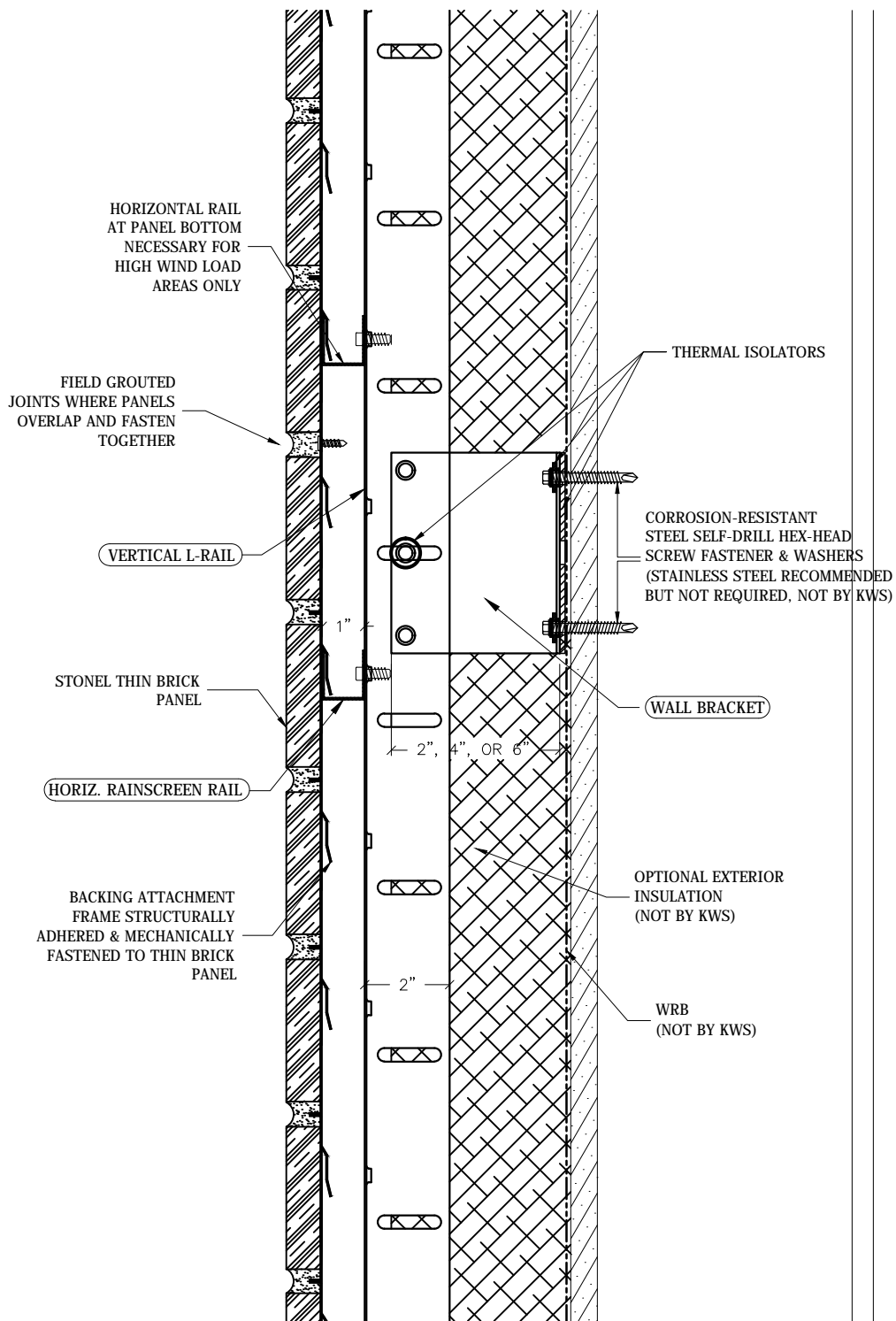


# BRICK PANELS with STOFIX®

## GUIDE DETAILS

Revision: December 08, 2010

www.knightwallsystems.com



**NOTE:**

THESE GUIDELINE DETAILS ARE PROVIDED FOR INFORMATION ONLY AND DO NOT REPLACE THE SERVICES OF A REGISTERED DESIGN PROFESSIONAL.

For multi-cladding transition details, or to download the CAD version of these details, please visit us online at [www.knightwallsystems.com](http://www.knightwallsystems.com)

© Knight Wall Systems  
Deer Park, WA - 509.262.0104  
PATENT PENDING

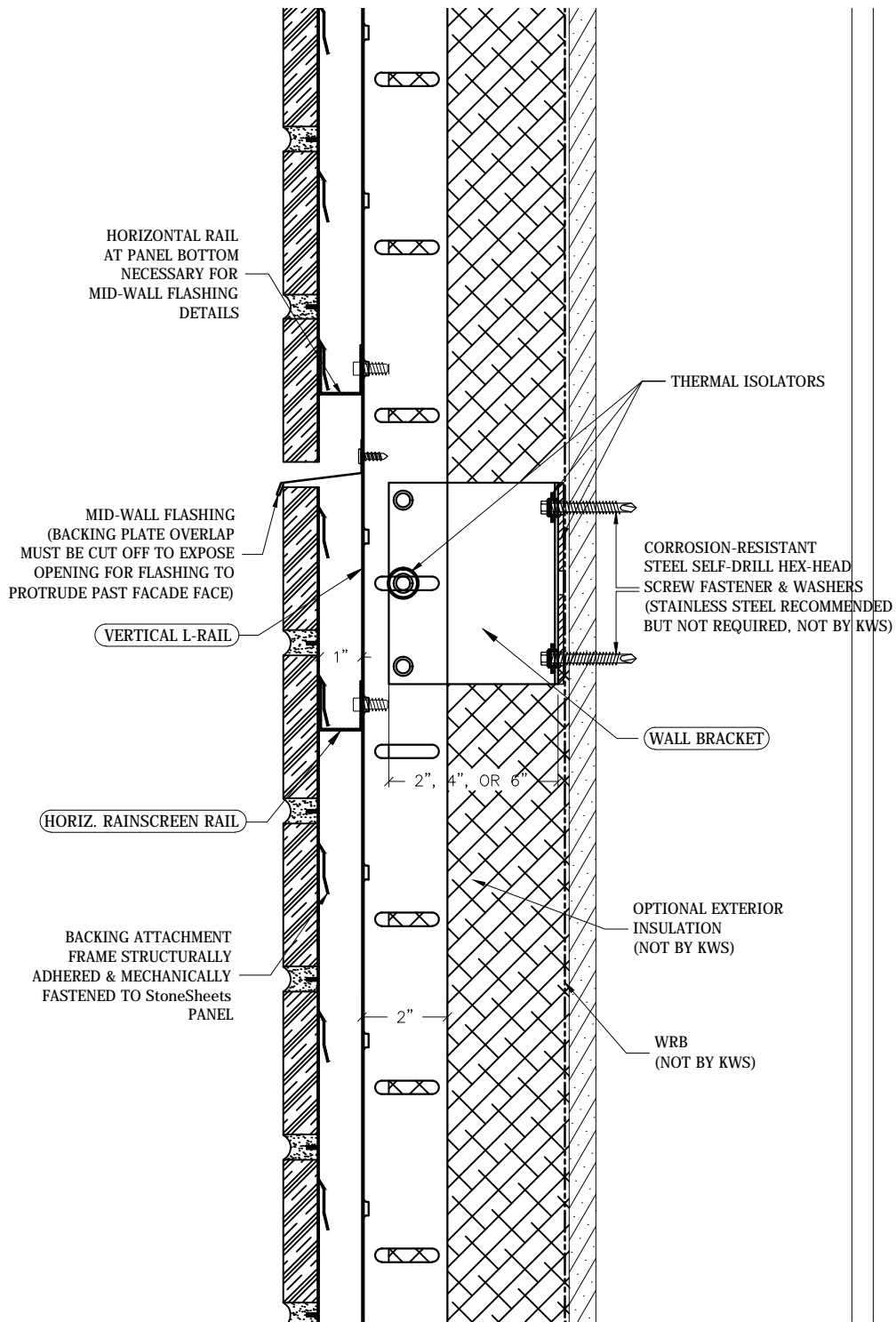


# BRICK PANELS with STOFIX®

## GUIDE DETAILS

Revision: December 08, 2010

www.knightwallsystems.com



**NOTE:**

THESE GUIDELINE DETAILS ARE PROVIDED FOR INFORMATION ONLY AND DO NOT REPLACE THE SERVICES OF A REGISTERED DESIGN PROFESSIONAL.

For multi-cladding transition details, or to download the CAD version of these details, please visit us online at [www.knightwallsystems.com](http://www.knightwallsystems.com)

© Knight Wall Systems  
Deer Park, WA - 509.262.0104  
PATENT PENDING

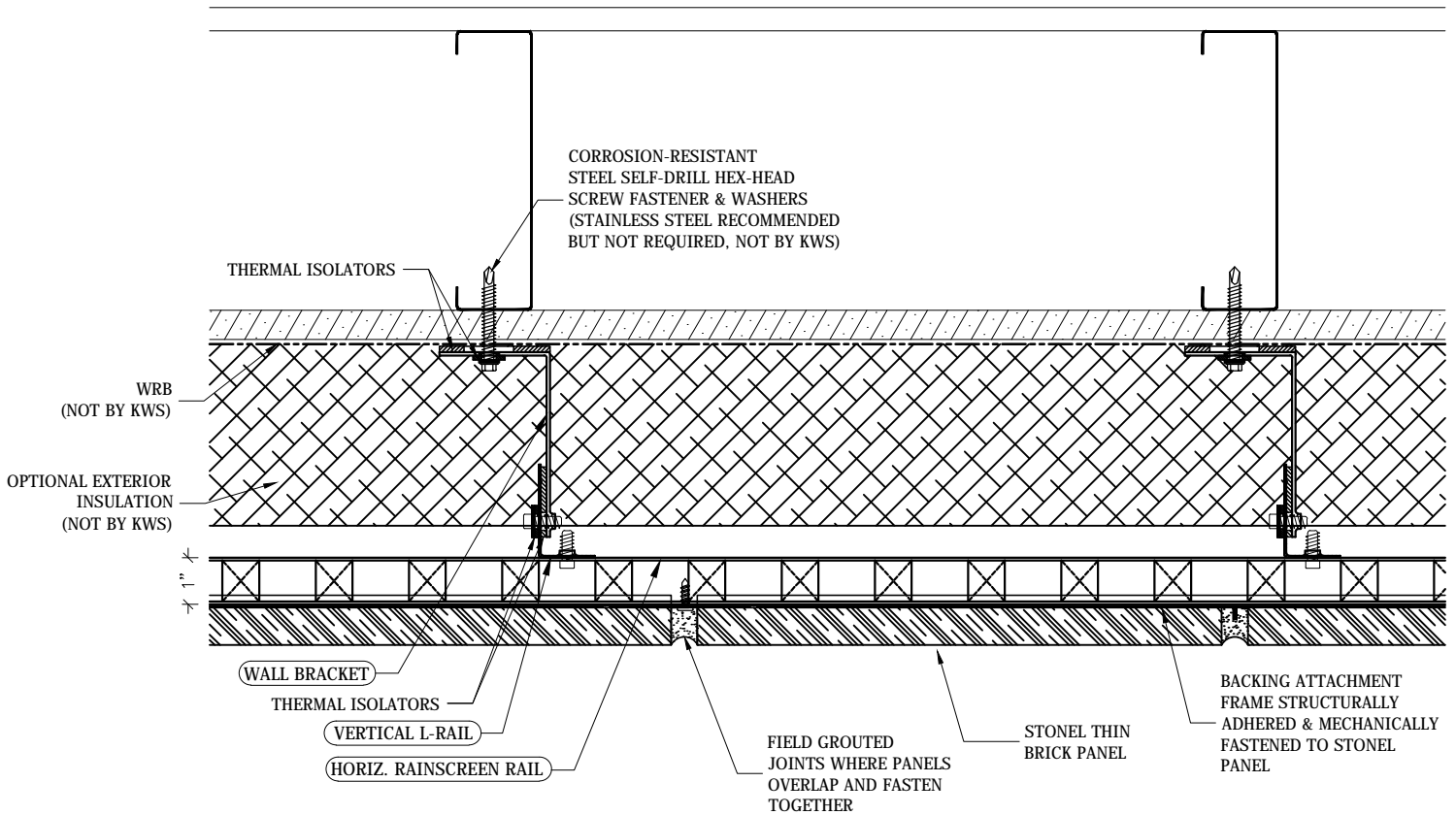


# BRICK PANELS with STOFIX®

## GUIDE DETAILS

Revision: December 08, 2010

www.knightwallsystems.com



**NOTE:**

THESE GUIDELINE DETAILS ARE PROVIDED FOR INFORMATION ONLY AND DO NOT REPLACE THE SERVICES OF A REGISTERED DESIGN PROFESSIONAL.

For multi-cladding transition details, or to download the CAD version of these details, please visit us online at [www.knightwallsystems.com](http://www.knightwallsystems.com)

© Knight Wall Systems  
Deer Park, WA - 509.262.0104  
PATENT PENDING

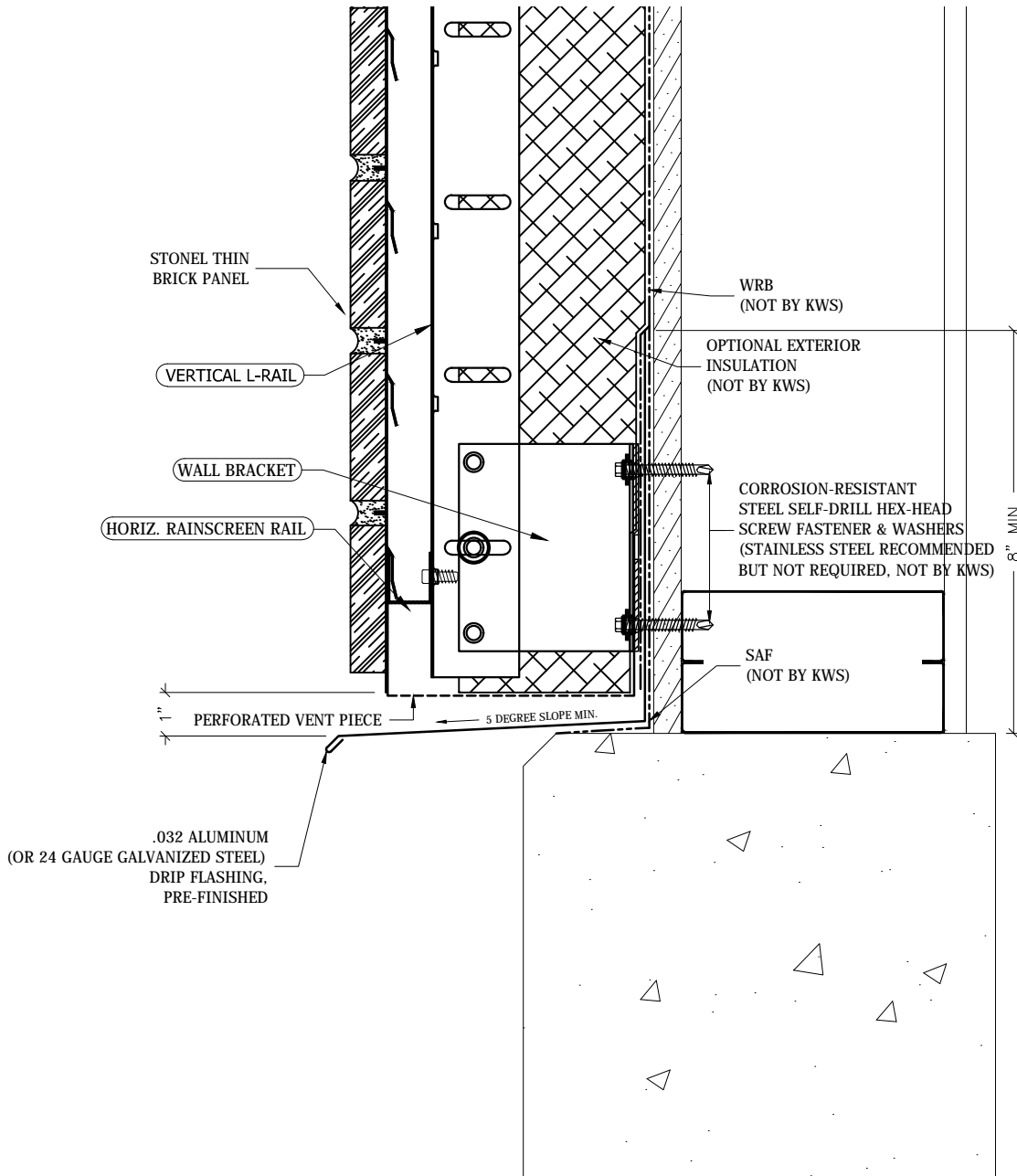


# BRICK PANELS with STOFIX®

GUIDE DETAILS

Revision: December 08, 2010

www.knightwallsystems.com



**NOTE:**

THESE GUIDELINE DETAILS ARE PROVIDED FOR INFORMATION ONLY AND DO NOT REPLACE THE SERVICES OF A REGISTERED DESIGN PROFESSIONAL.

For multi-cladding transition details, or to download the CAD version of these details, please visit us online at [www.knightwallsystems.com](http://www.knightwallsystems.com)

© Knight Wall Systems  
Deer Park, WA - 509.262.0104  
PATENT PENDING

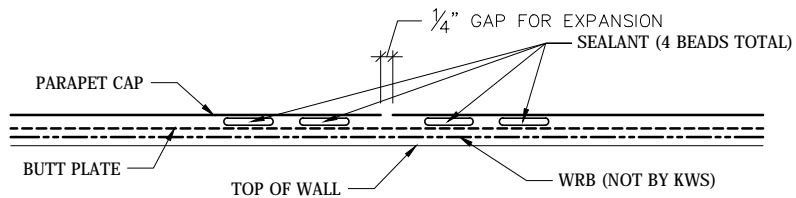
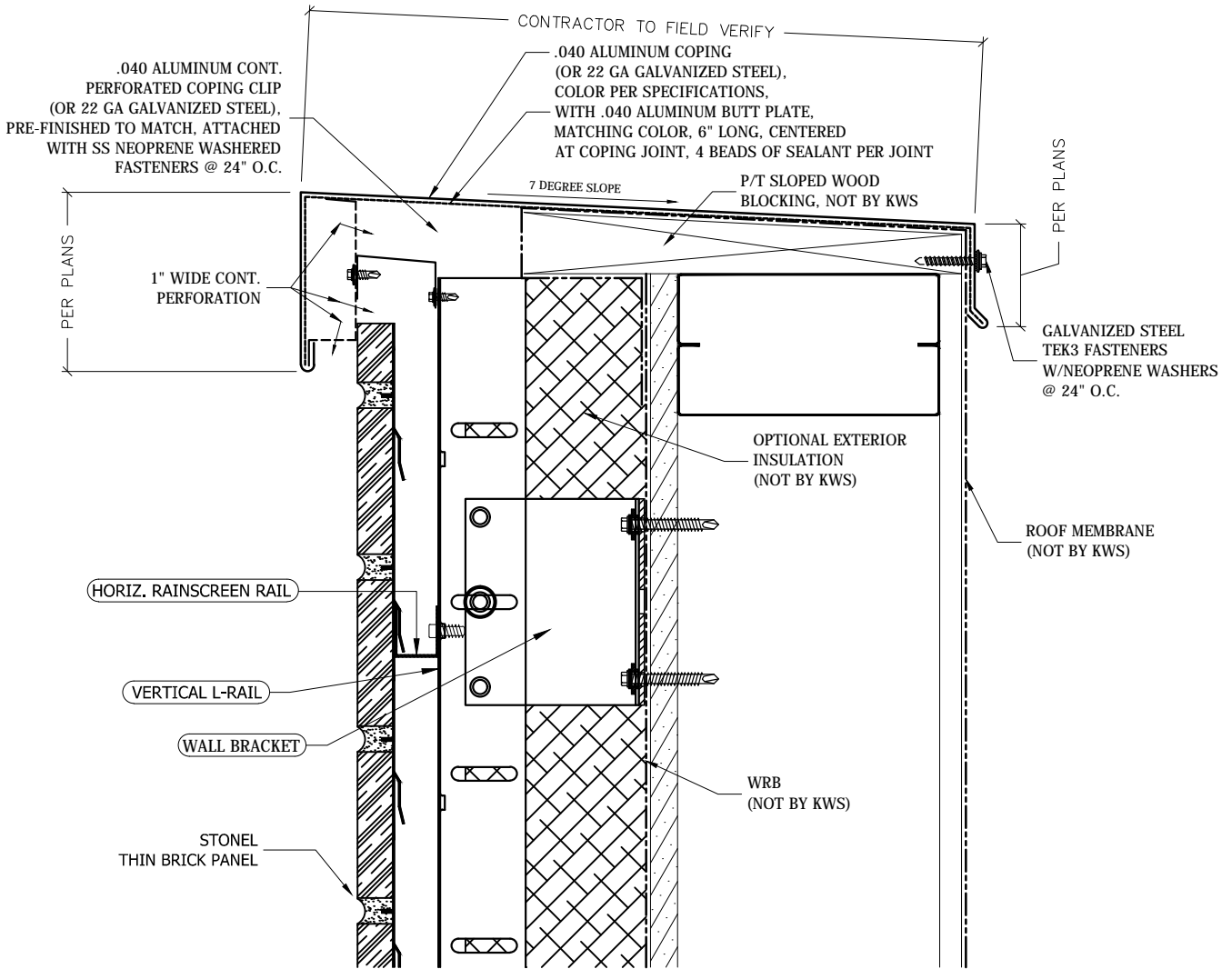


# BRICK PANELS with STOFIX®

## GUIDE DETAILS

Revision: December 08, 2010

www.knightwallsystems.com



**04** SECTION @ BUTT PLATE  
Scale: NTS

**NOTE:**  
THESE GUIDELINE DETAILS ARE PROVIDED FOR INFORMATION ONLY AND DO NOT REPLACE THE SERVICES OF A REGISTERED DESIGN PROFESSIONAL.  
For multi-cladding transition details, or to download the CAD version of these details, please visit us online at [www.knightwallsystems.com](http://www.knightwallsystems.com)

© Knight Wall Systems  
Deer Park, WA - 509.262.0104  
PATENT PENDING

**04** PARAPET/COPING  
Scale: 3" = 1'-0" Drawn by: BN

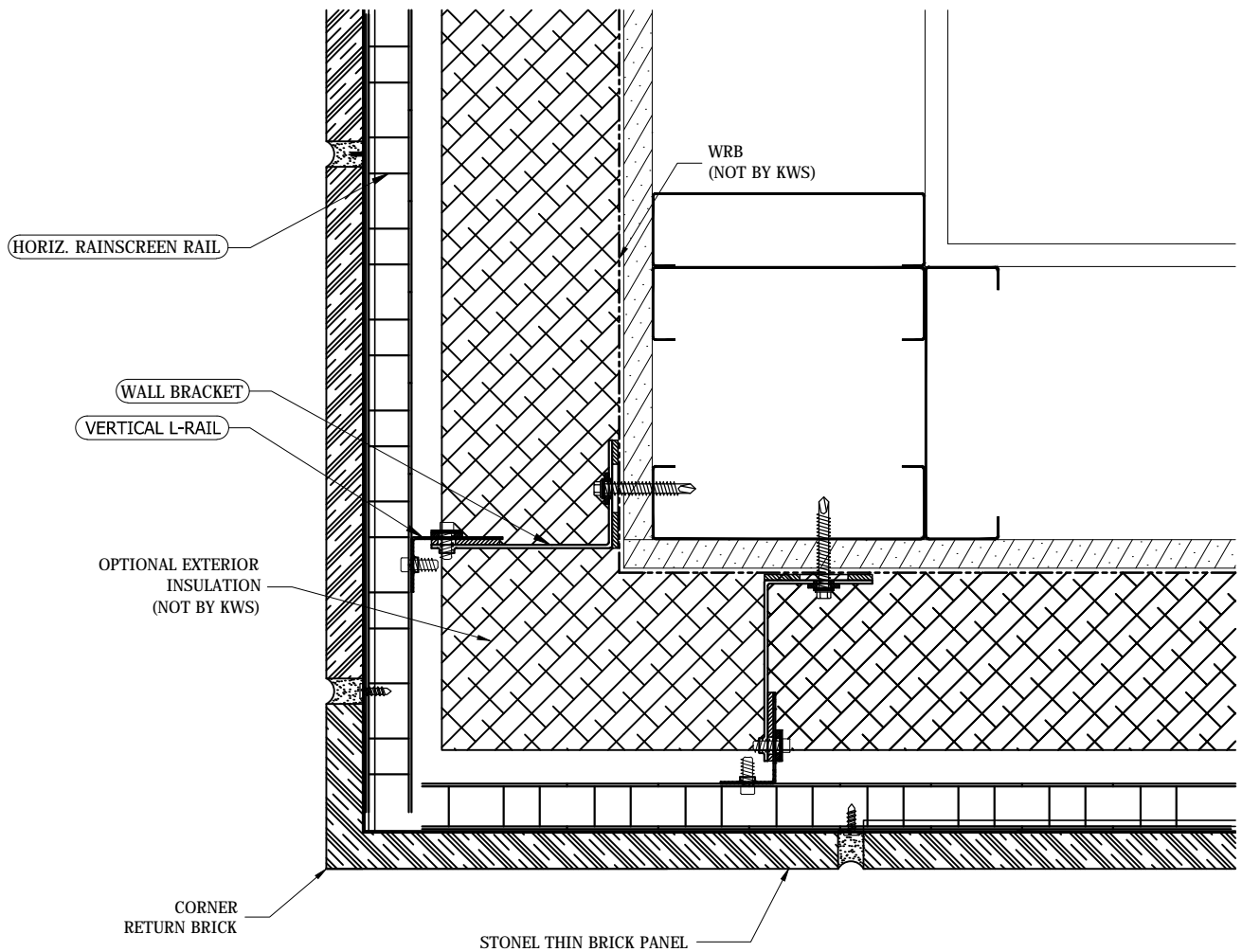


# BRICK PANELS with STOFIX®

## GUIDE DETAILS

Revision: December 08, 2010

[www.knightwallsystems.com](http://www.knightwallsystems.com)



**NOTE:**

THESE GUIDELINE DETAILS ARE PROVIDED FOR INFORMATION ONLY AND DO NOT REPLACE THE SERVICES OF A REGISTERED DESIGN PROFESSIONAL.

For multi-cladding transition details, or to download the CAD version of these details, please visit us online at [www.knightwallsystems.com](http://www.knightwallsystems.com)

© Knight Wall Systems  
Deer Park, WA - 509.262.0104  
PATENT PENDING

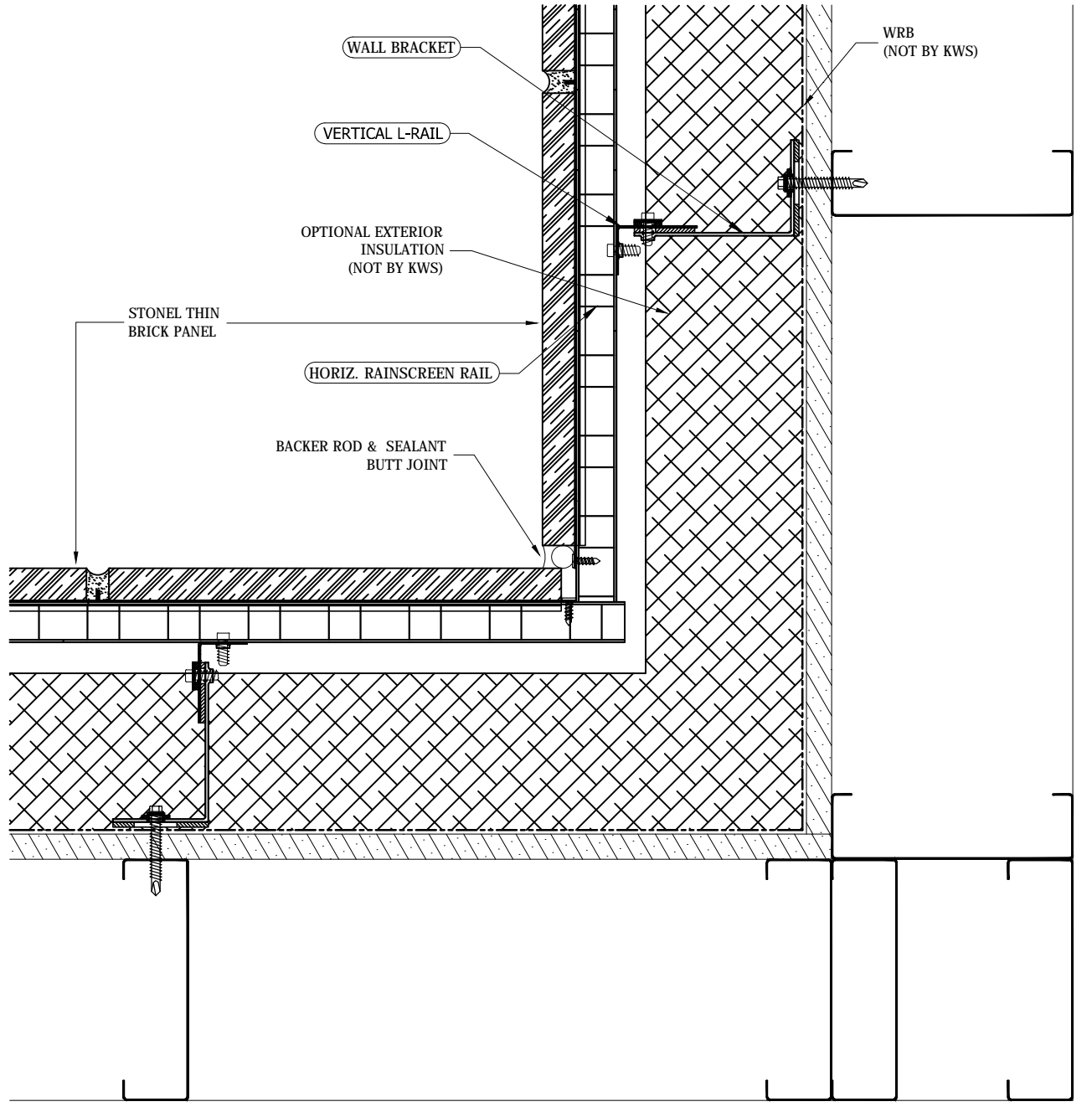


# BRICK PANELS with STOFIX®

## GUIDE DETAILS

Revision: December 08, 2010

[www.knightwallsystems.com](http://www.knightwallsystems.com)



**NOTE:**

THESE GUIDELINE DETAILS ARE PROVIDED FOR INFORMATION ONLY AND DO NOT REPLACE THE SERVICES OF A REGISTERED DESIGN PROFESSIONAL.

For multi-cladding transition details, or to download the CAD version of these details, please visit us online at [www.knightwallsystems.com](http://www.knightwallsystems.com)

© Knight Wall Systems  
Deer Park, WA - 509.262.0104  
PATENT PENDING

06

INSIDE CORNER

Scale: 3" = 1'-0"

Drawn by: BN

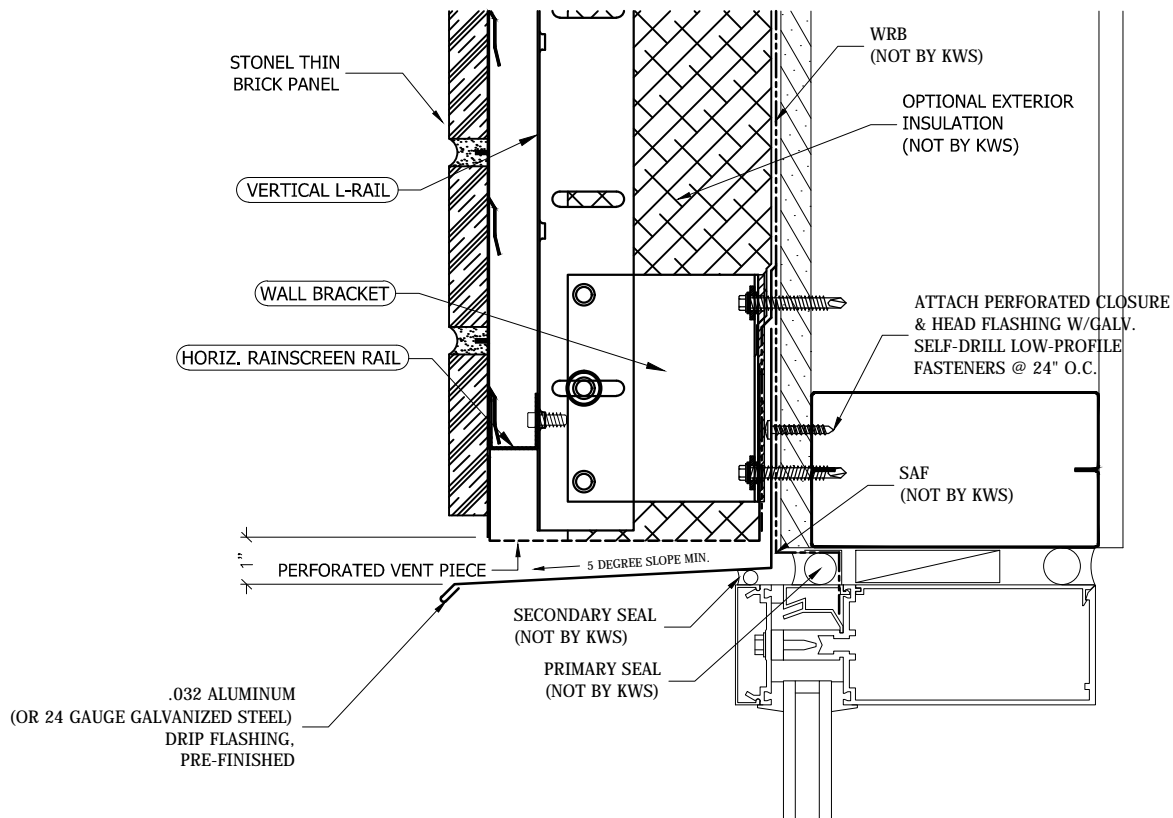


# BRICK PANELS with STOFIX®

## GUIDE DETAILS

Revision: December 08, 2010

www.knightwallsystems.com



**NOTE:**

THESE GUIDELINE DETAILS ARE PROVIDED FOR INFORMATION ONLY AND DO NOT REPLACE THE SERVICES OF A REGISTERED DESIGN PROFESSIONAL.

For multi-cladding transition details, or to download the CAD version of these details, please visit us online at [www.knightwallsystems.com](http://www.knightwallsystems.com)

© Knight Wall Systems  
Deer Park, WA - 509.262.0104  
PATENT PENDING

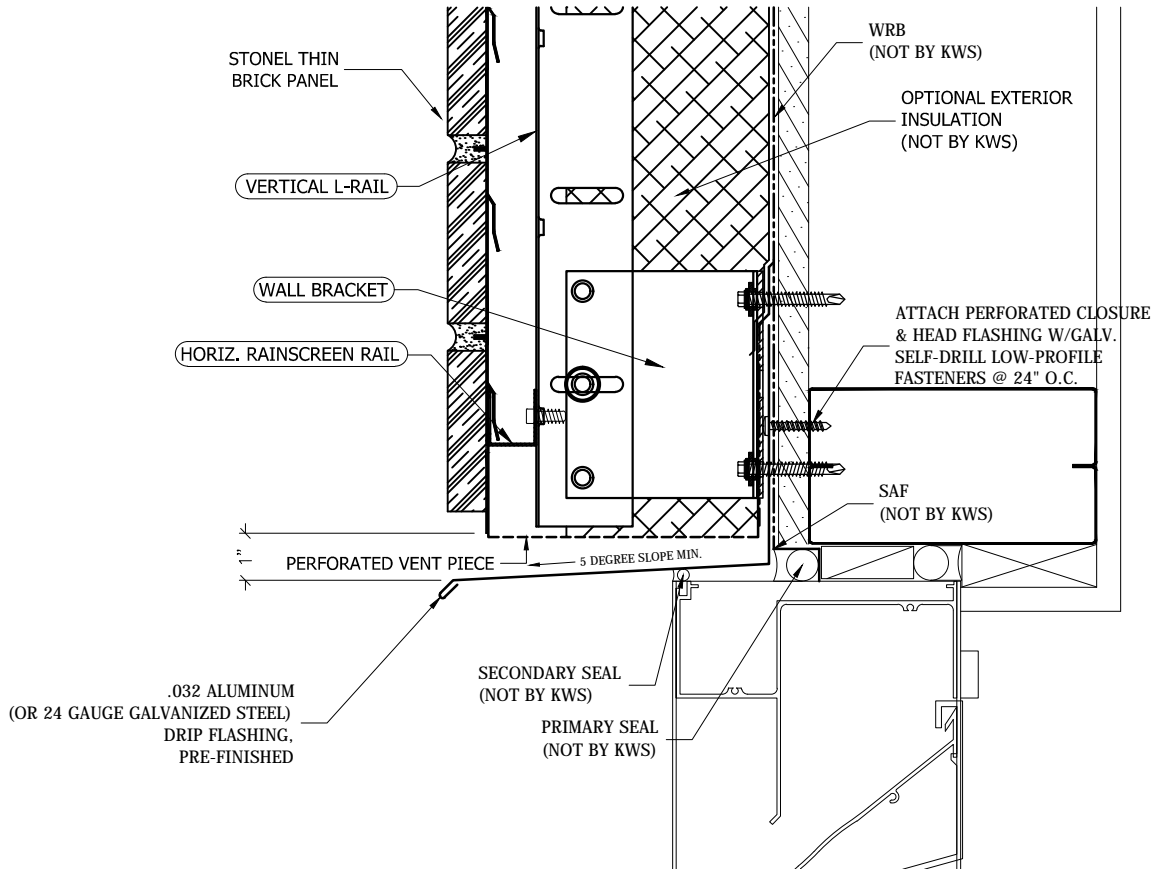


# BRICK PANELS with STOFIX®

## GUIDE DETAILS

Revision: December 08, 2010

www.knightwallsystems.com



**NOTE:**

THESE GUIDELINE DETAILS ARE PROVIDED FOR INFORMATION ONLY AND DO NOT REPLACE THE SERVICES OF A REGISTERED DESIGN PROFESSIONAL.

For multi-cladding transition details, or to download the CAD version of these details, please visit us online at [www.knightwallsystems.com](http://www.knightwallsystems.com)

© Knight Wall Systems  
Deer Park, WA - 509.262.0104  
PATENT PENDING

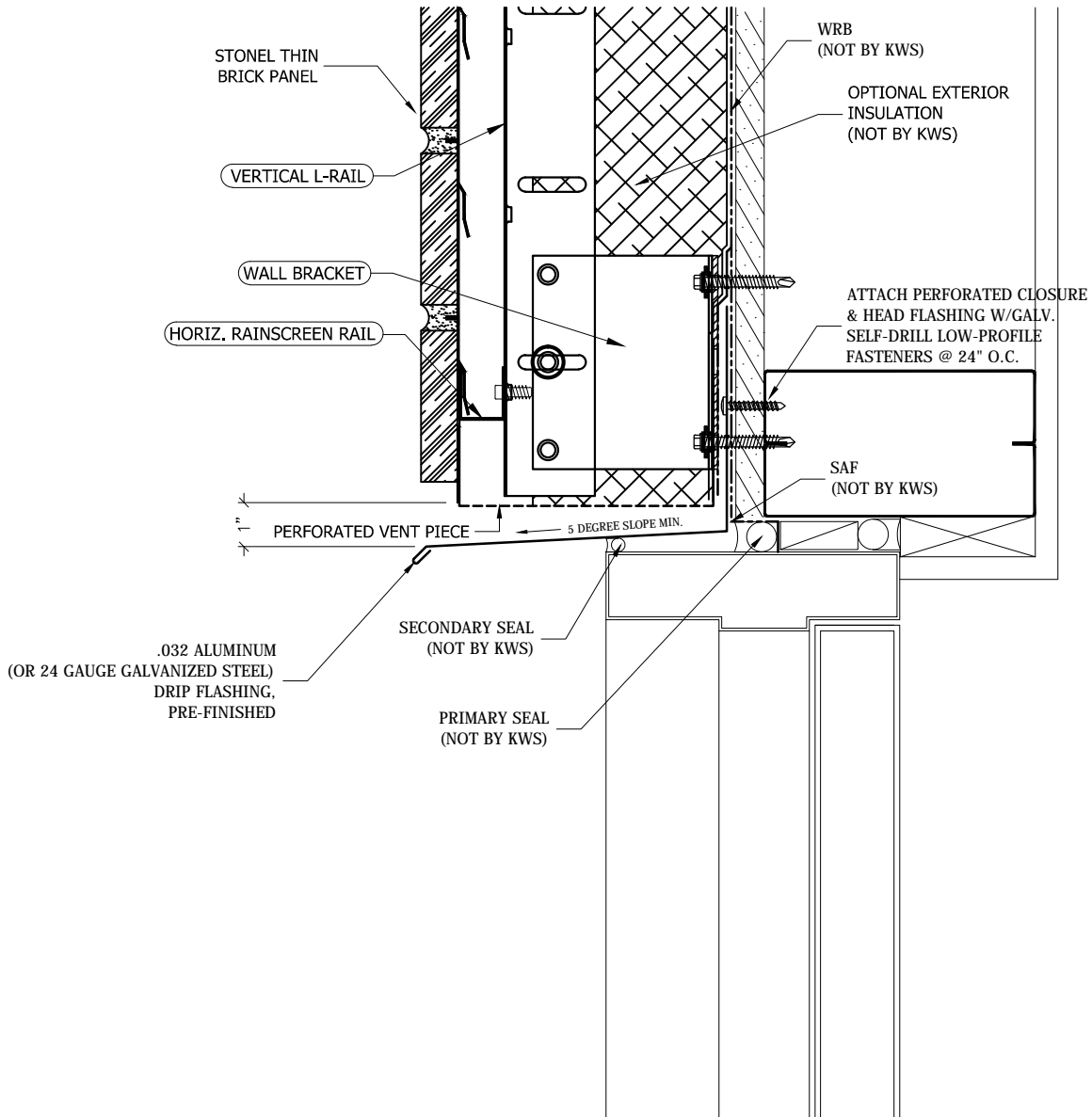


# BRICK PANELS with STOFIX®

## GUIDE DETAILS

Revision: December 08, 2010

www.knightwallsystems.com



**NOTE:**

THESE GUIDELINE DETAILS ARE PROVIDED FOR INFORMATION ONLY AND DO NOT REPLACE THE SERVICES OF A REGISTERED DESIGN PROFESSIONAL.

For multi-cladding transition details, or to download the CAD version of these details, please visit us online at [www.knightwallsystems.com](http://www.knightwallsystems.com)

© Knight Wall Systems  
Deer Park, WA - 509.262.0104  
PATENT PENDING

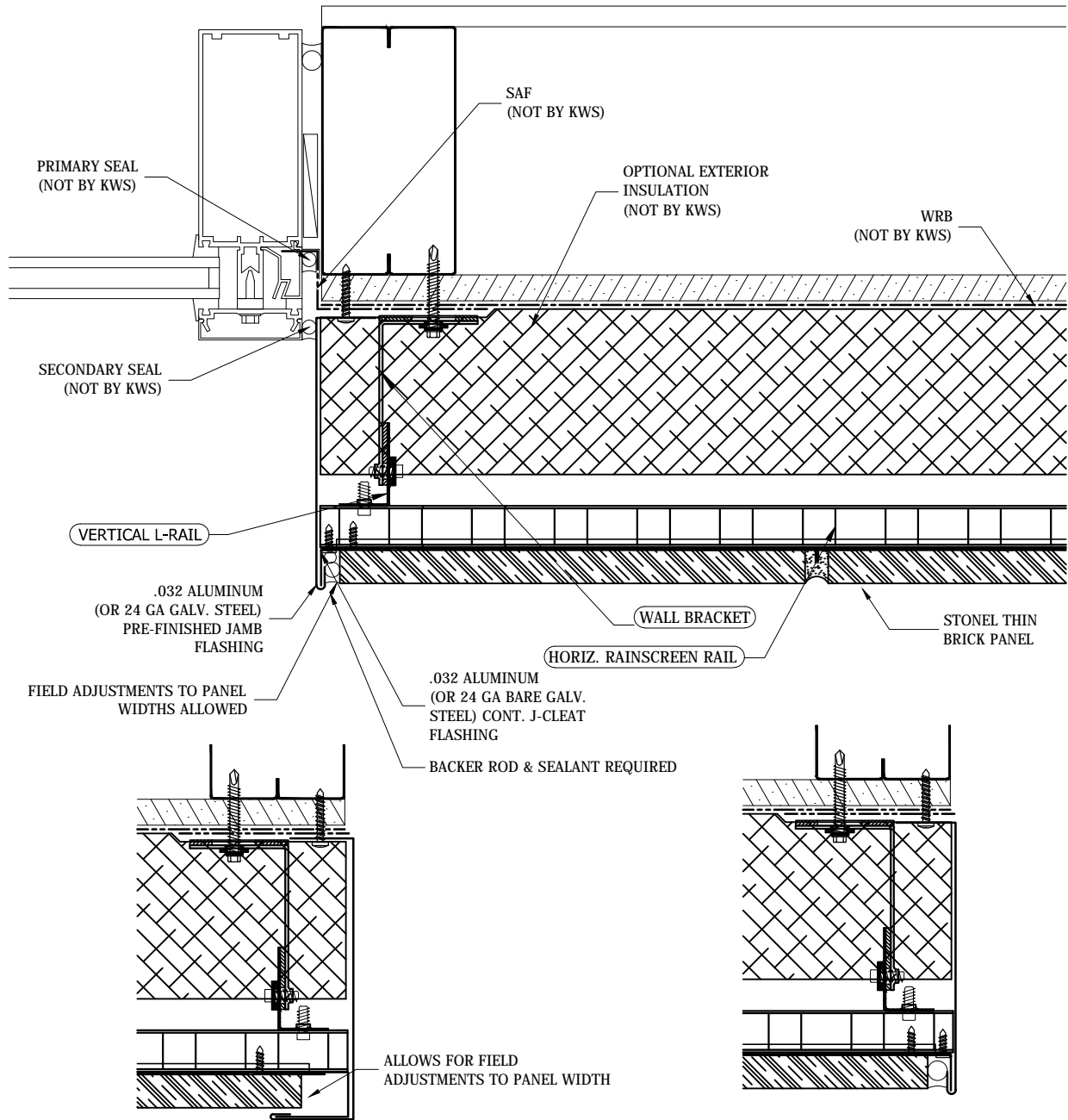


# BRICK PANELS with STOFIX®

## GUIDE DETAILS

Revision: December 08, 2010

www.knightwallsystems.com



**10** ALTERNATE WINDOW JAMB  
Scale: 3"=1'

**10** WINDOW JAMB - LEFT  
Scale: 3"=1'

**NOTE:**  
THESE GUIDELINE DETAILS ARE PROVIDED FOR INFORMATION ONLY AND DO NOT REPLACE THE SERVICES OF A REGISTERED DESIGN PROFESSIONAL.  
For multi-cladding transition details, or to download the CAD version of these details, please visit us online at [www.knightwallsystems.com](http://www.knightwallsystems.com)  
© Knight Wall Systems  
Deer Park, WA - 509.262.0104  
PATENT PENDING

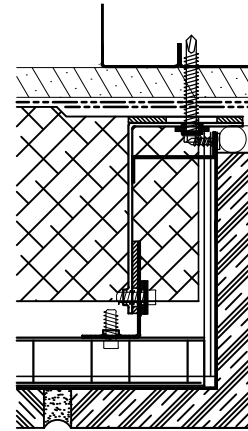
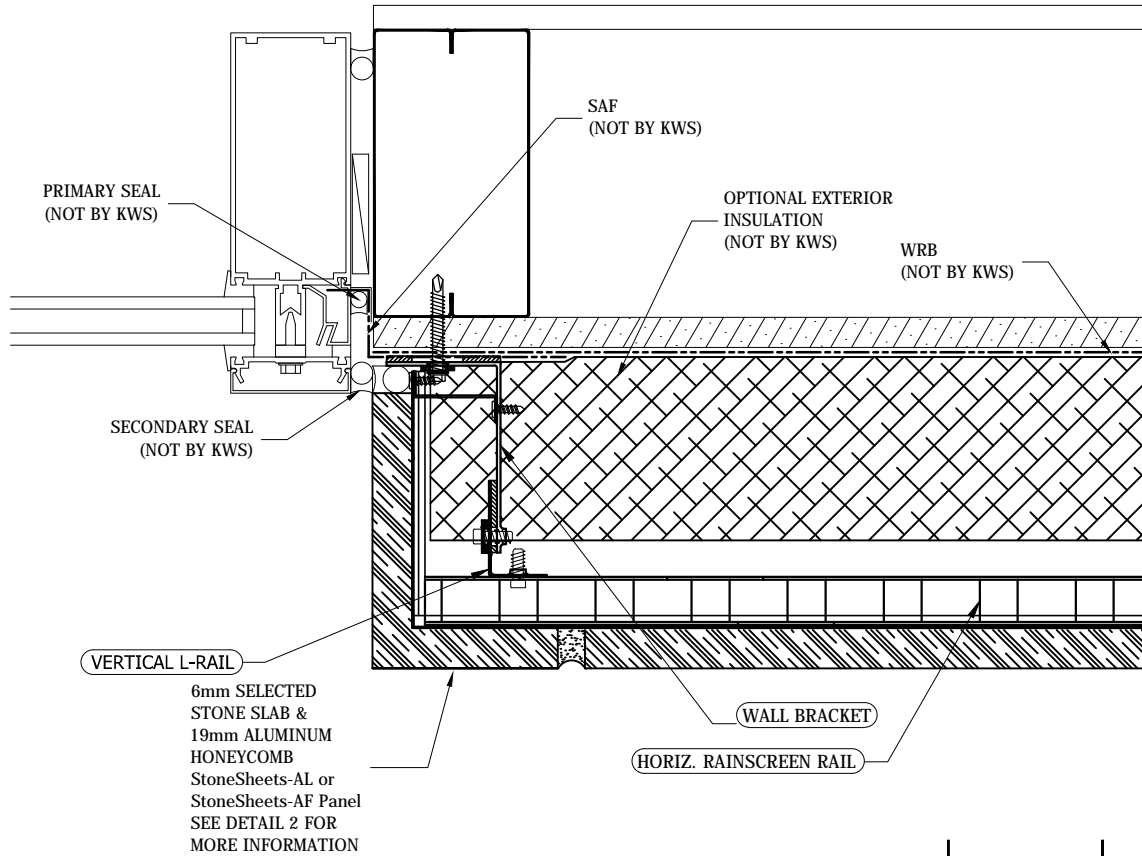


# BRICK PANELS with STOFIX®

## GUIDE DETAILS

Revision: December 08, 2010

www.knightwallsystems.com



10 WINDOW JAMB - LEFT  
Scale: 3"=1'

**NOTE:**  
THESE GUIDELINE DETAILS ARE PROVIDED FOR INFORMATION ONLY AND DO NOT REPLACE THE SERVICES OF A REGISTERED DESIGN PROFESSIONAL.  
For multi-cladding transition details, or to download the CAD version of these details, please visit us online at [www.knightwallsystems.com](http://www.knightwallsystems.com)  
© Knight Wall Systems  
Deer Park, WA - 509.262.0104  
PATENT PENDING

10B WINDOW JAMB w/BRICK  
Scale: 3" = 1'-0" Drawn by: BN

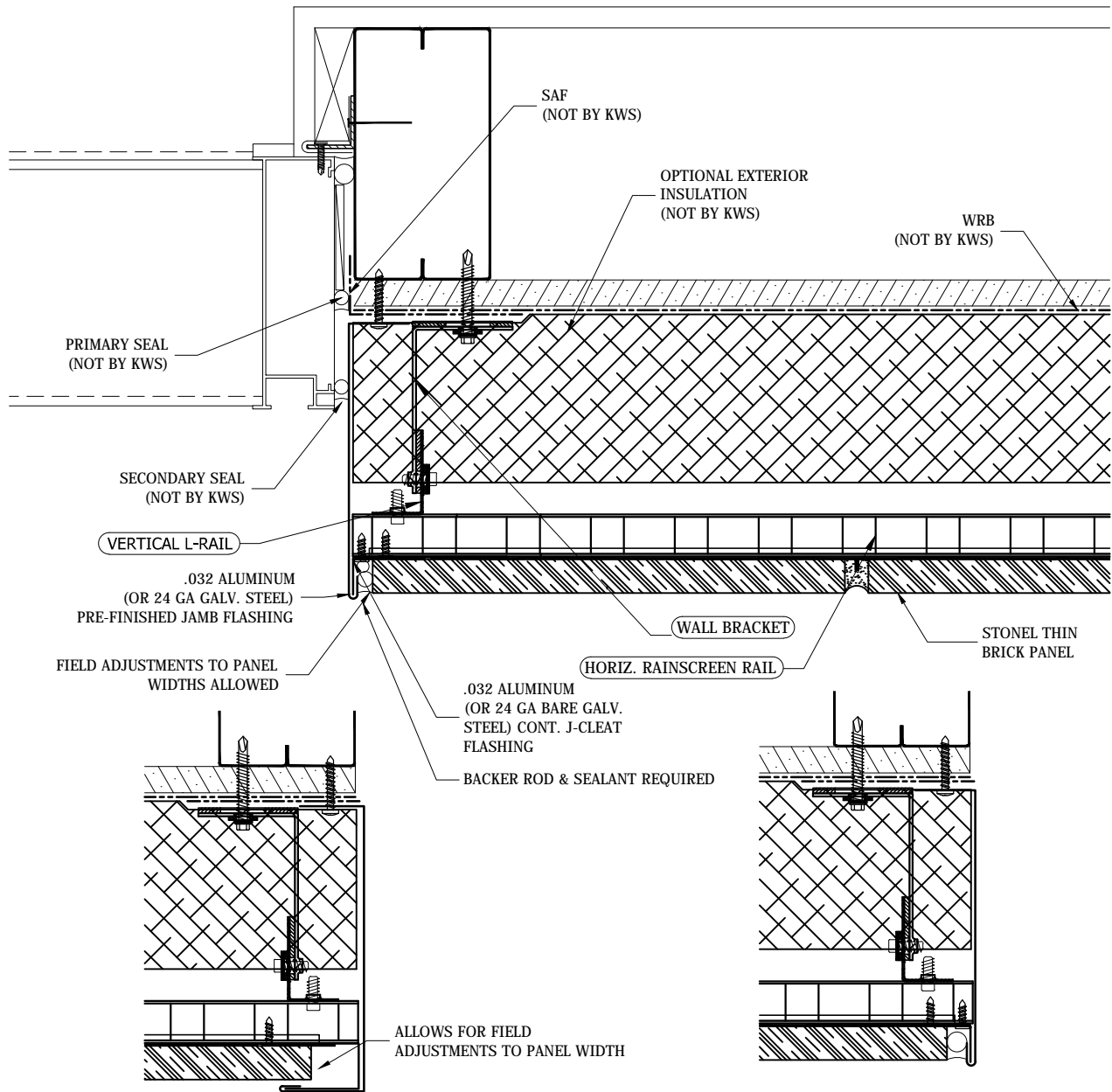


# BRICK PANELS with STOFIX®

## GUIDE DETAILS

Revision: December 08, 2010

www.knightwallsystems.com



11 ALTERNATE LOUVER JAMB  
Scale: 3"=1'

11 LOUVER JAMB - LEFT  
Scale: 3"=1'

**NOTE:**  
THESE GUIDELINE DETAILS ARE PROVIDED FOR INFORMATION ONLY AND DO NOT REPLACE THE SERVICES OF A REGISTERED DESIGN PROFESSIONAL.  
For multi-cladding transition details, or to download the CAD version of these details, please visit us online at [www.knightwallsystems.com](http://www.knightwallsystems.com)  
© Knight Wall Systems  
Deer Park, WA - 509.262.0104  
PATENT PENDING

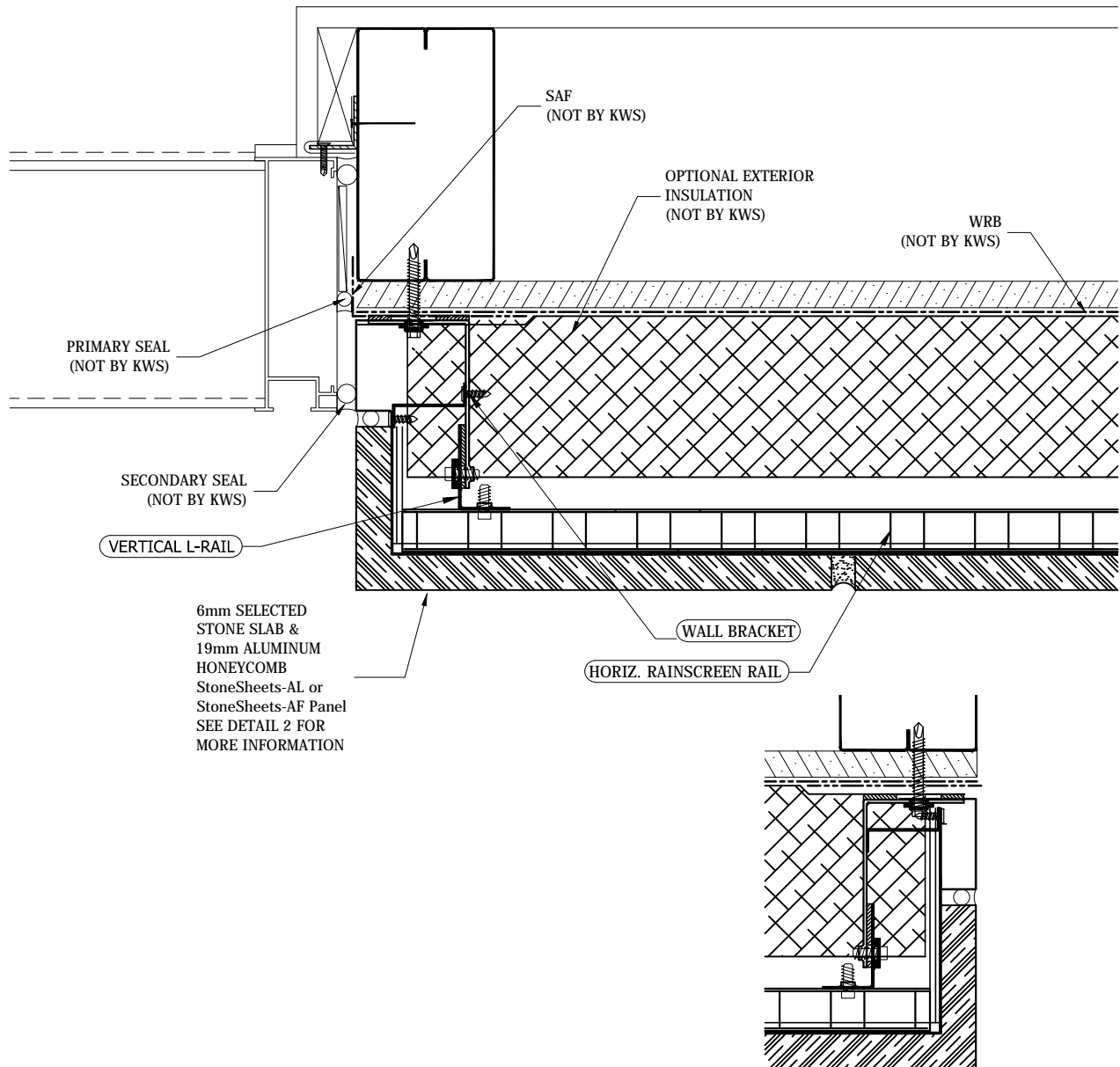


# BRICK PANELS with STOFIX®

## GUIDE DETAILS

Revision: December 08, 2010

www.knightwallsystems.com



**NOTE:**  
THESE GUIDELINE DETAILS ARE PROVIDED FOR INFORMATION ONLY AND DO NOT REPLACE THE SERVICES OF A REGISTERED DESIGN PROFESSIONAL.

For multi-cladding transition details, or to download the CAD version of these details, please visit us online at [www.knightwallsystems.com](http://www.knightwallsystems.com)

© Knight Wall Systems  
Deer Park, WA - 509.262.0104  
PATENT PENDING

### 11 LOUVER JAMB - LEFT

Scale: 3"=1'

### 11B LOUVER JAMB w/BRICK

Scale: 3" = 1'-0" Drawn by: BN

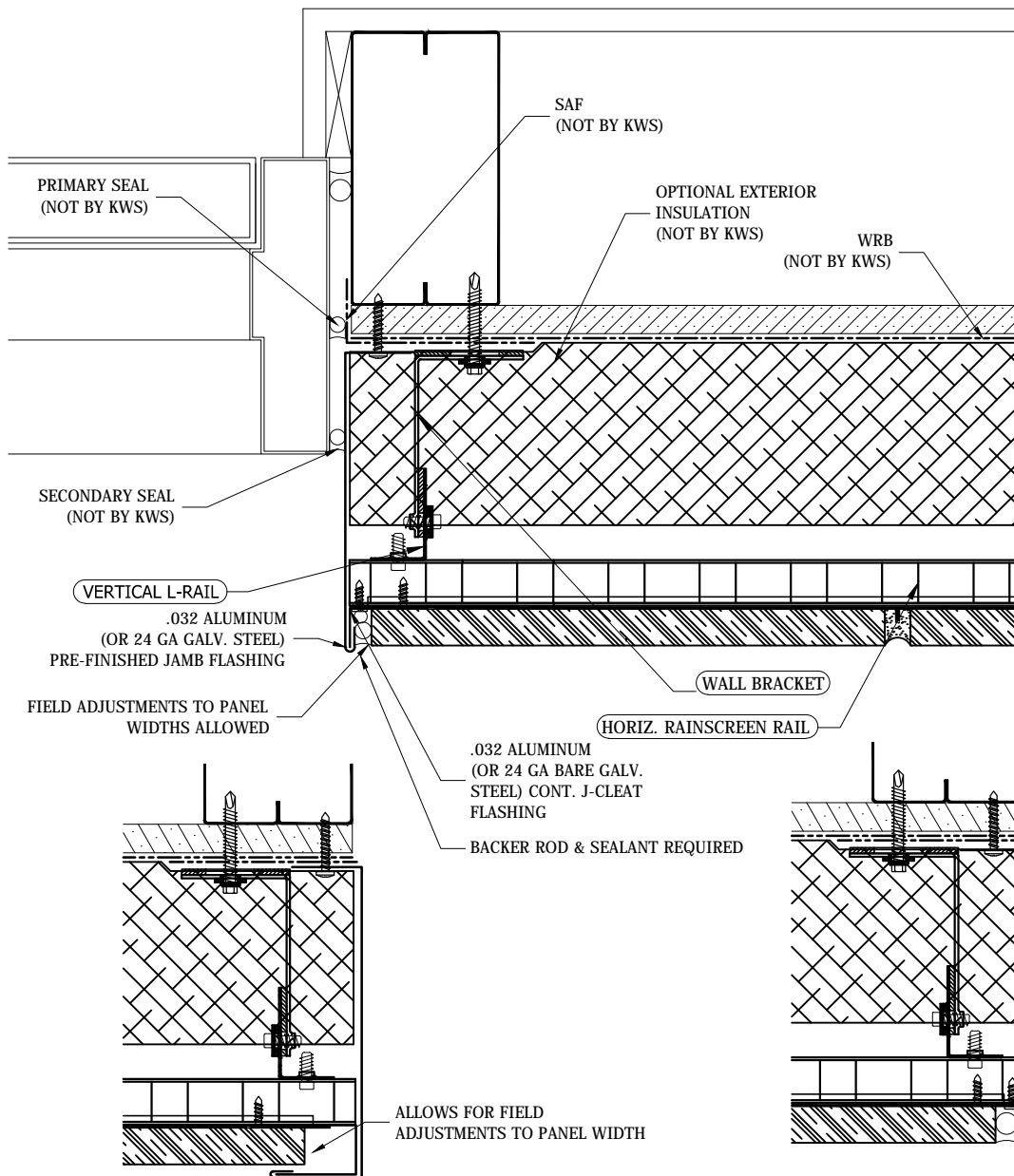


# BRICK PANELS with STOFIX®

## GUIDE DETAILS

Revision: December 08, 2010

www.knightwallsystems.com



**12** ALTERNATE DOOR JAMB  
Scale: 3"=1'

**12** DOOR JAMB - LEFT  
Scale: 3"=1'

**NOTE:**  
THESE GUIDELINE DETAILS ARE PROVIDED FOR INFORMATION ONLY AND DO NOT REPLACE THE SERVICES OF A REGISTERED DESIGN PROFESSIONAL.  
For multi-cladding transition details, or to download the CAD version of these details, please visit us online at [www.knightwallsystems.com](http://www.knightwallsystems.com)  
© Knight Wall Systems  
Deer Park, WA - 509.262.0104  
PATENT PENDING

**12A** DOOR JAMB w/FLASHING  
Scale: 3" = 1'-0" Drawn by: BN

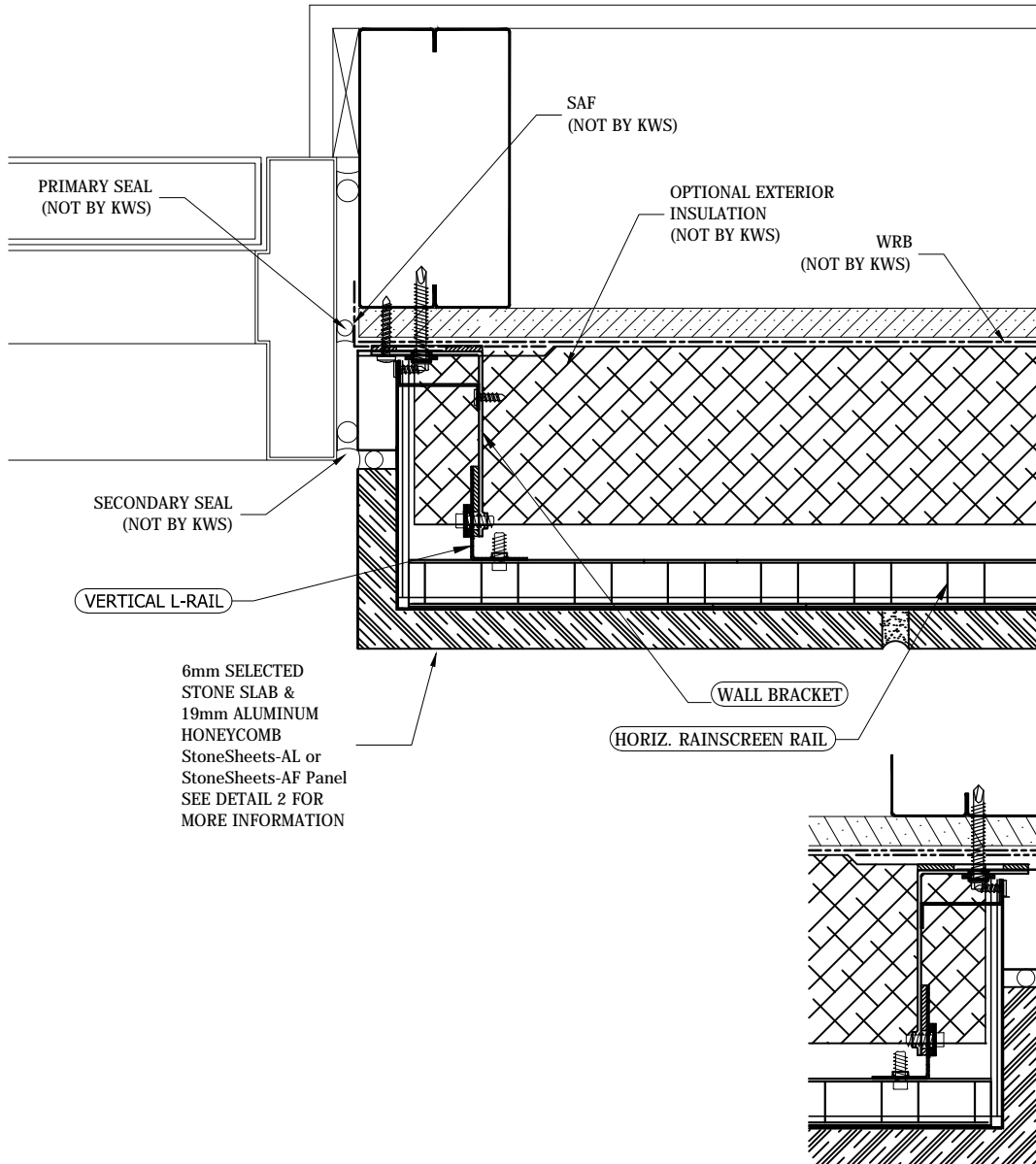


# BRICK PANELS with STOFIX®

## GUIDE DETAILS

Revision: December 08, 2010

www.knightwallsystems.com



**NOTE:**  
 THESE GUIDELINE DETAILS ARE PROVIDED FOR INFORMATION ONLY AND DO NOT REPLACE THE SERVICES OF A REGISTERED DESIGN PROFESSIONAL.  
 For multi-cladding transition details, or to download the CAD version of these details, please visit us online at [www.knightwallsystems.com](http://www.knightwallsystems.com)  
 © Knight Wall Systems  
 Deer Park, WA - 509.262.0104  
 PATENT PENDING

**12** DOOR JAMB - LEFT  
 Scale: 3"=1'

**12B** DOOR JAMB w/BRICK  
 Scale: 3" = 1'-0" Drawn by: BN

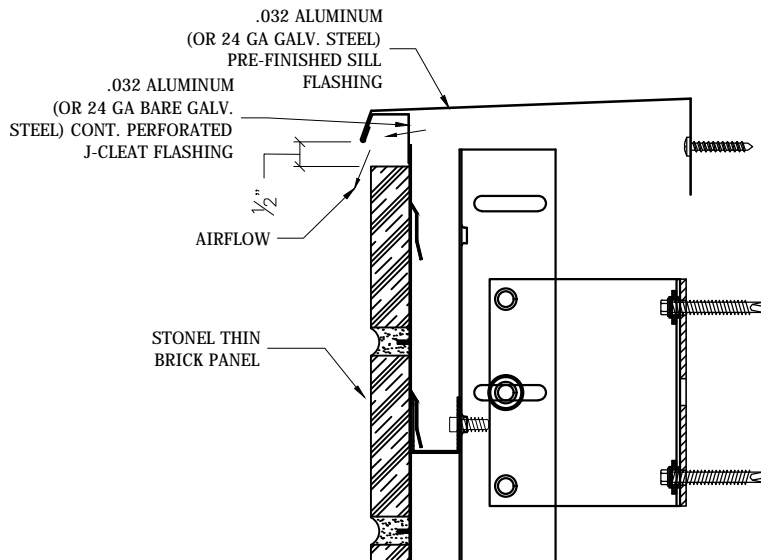
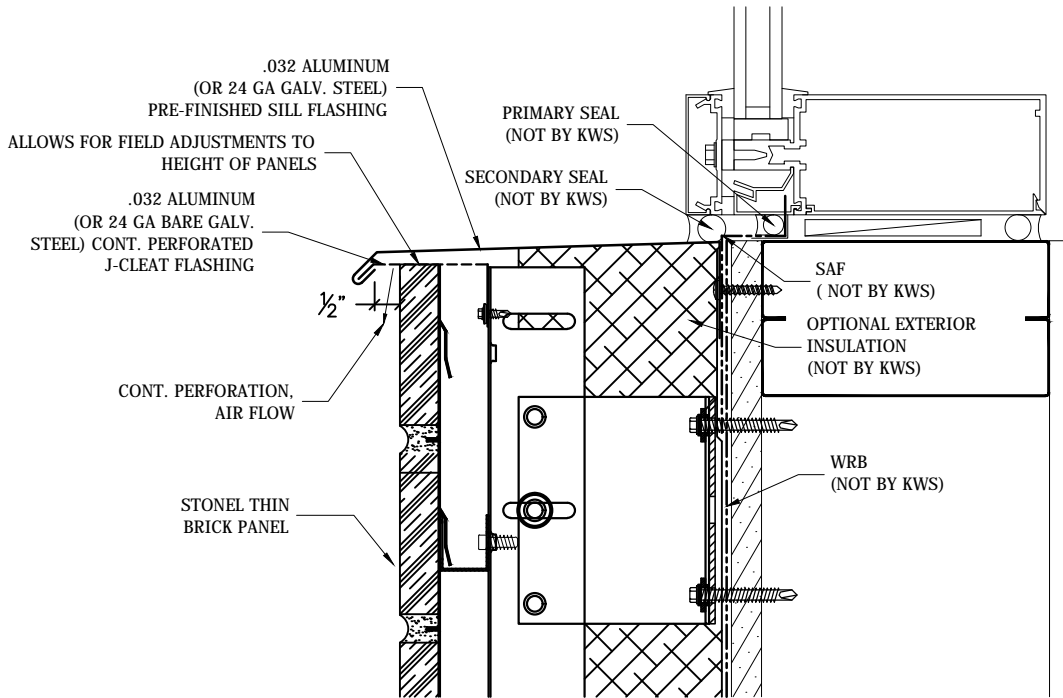


# BRICK PANELS with STOFIX®

## GUIDE DETAILS

Revision: December 08, 2010

www.knightwallsystems.com



**13** ALTERNATE WINDOW SILL

Scale: 3"=1'

**NOTE:**  
 THESE GUIDELINE DETAILS ARE PROVIDED FOR INFORMATION ONLY AND DO NOT REPLACE THE SERVICES OF A REGISTERED DESIGN PROFESSIONAL.  
 For multi-cladding transition details, or to download the CAD version of these details, please visit us online at [www.knightwallsystems.com](http://www.knightwallsystems.com)

© Knight Wall Systems  
 Deer Park, WA - 509.262.0104  
 PATENT PENDING

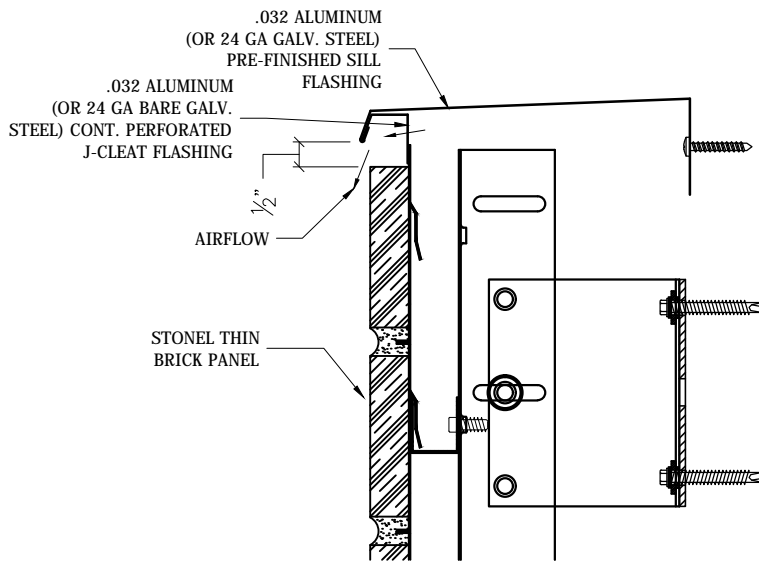
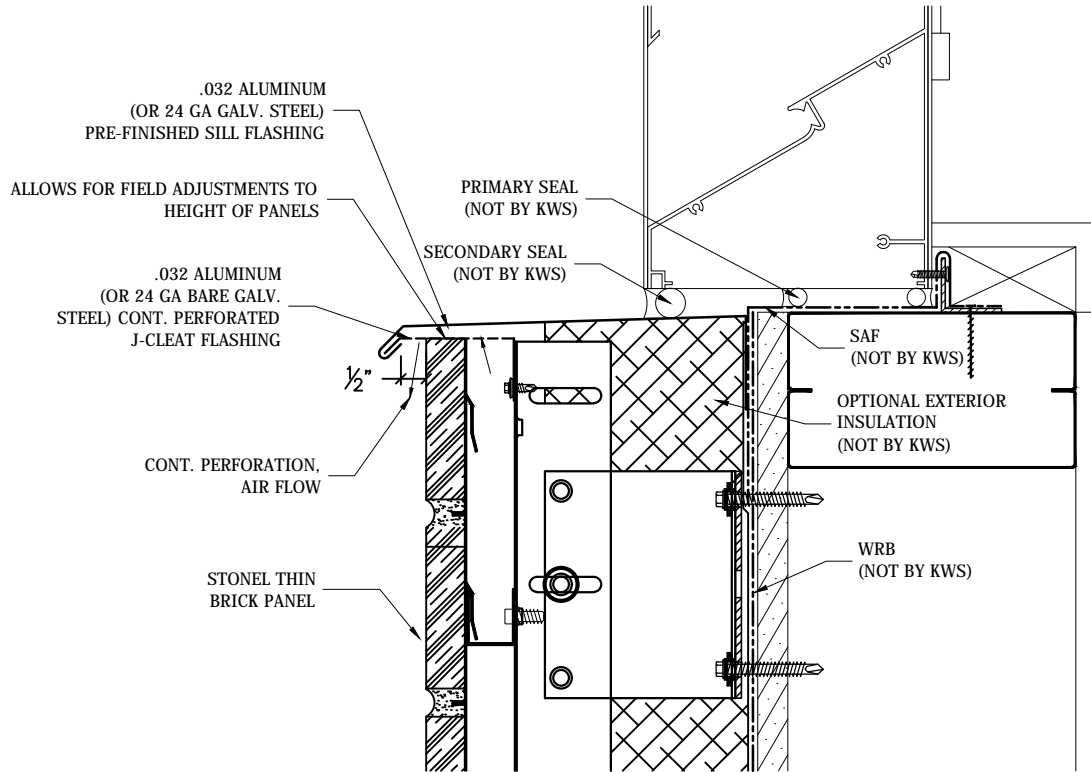


# BRICK PANELS with STOFIX®

## GUIDE DETAILS

Revision: December 08, 2010

www.knightwallsystems.com



**14** ALTERNATE LOUVER SILL  
Scale: 3"=1'

**NOTE:**  
THESE GUIDELINE DETAILS ARE PROVIDED FOR INFORMATION ONLY AND DO NOT REPLACE THE SERVICES OF A REGISTERED DESIGN PROFESSIONAL.  
For multi-cladding transition details, or to download the CAD version of these details, please visit us online at [www.knightwallsystems.com](http://www.knightwallsystems.com)  
© Knight Wall Systems  
Deer Park, WA - 509.262.0104  
PATENT PENDING

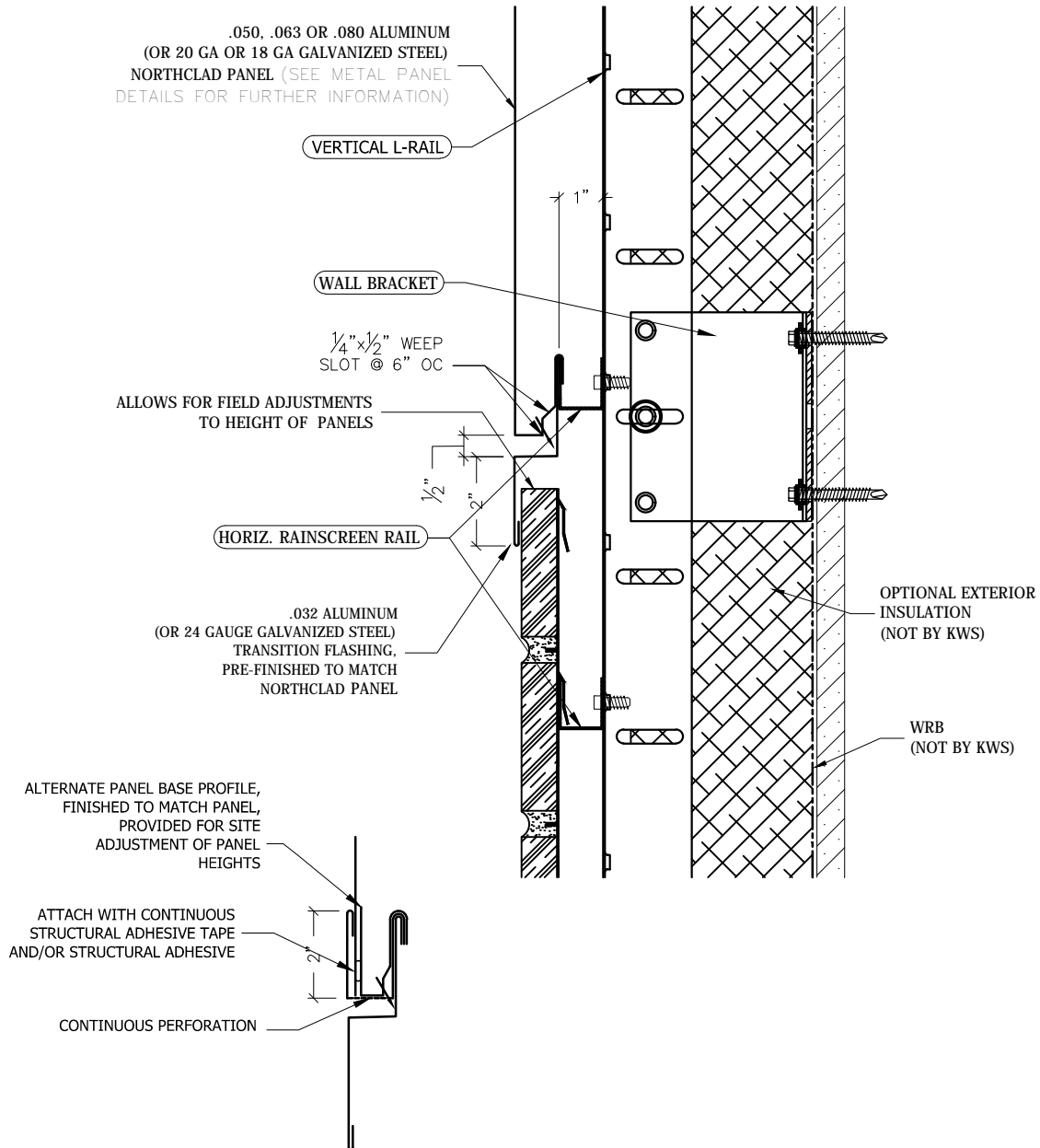


# BRICK PANELS with STOFIX®

## GUIDE DETAILS

Revision: December 08, 2010

www.knightwallsystems.com



**15** ALTERNATE PANEL BASE  
Scale: 3" = 1'

**NOTE:**

THESE GUIDELINE DETAILS ARE PROVIDED FOR INFORMATION ONLY AND DO NOT REPLACE THE SERVICES OF A REGISTERED DESIGN PROFESSIONAL.

For multi-cladding transition details, or to download the CAD version of these details, please visit us online at [www.knightwallsystems.com](http://www.knightwallsystems.com)

© Knight Wall Systems  
Deer Park, WA - 509.262.0104  
PATENT PENDING

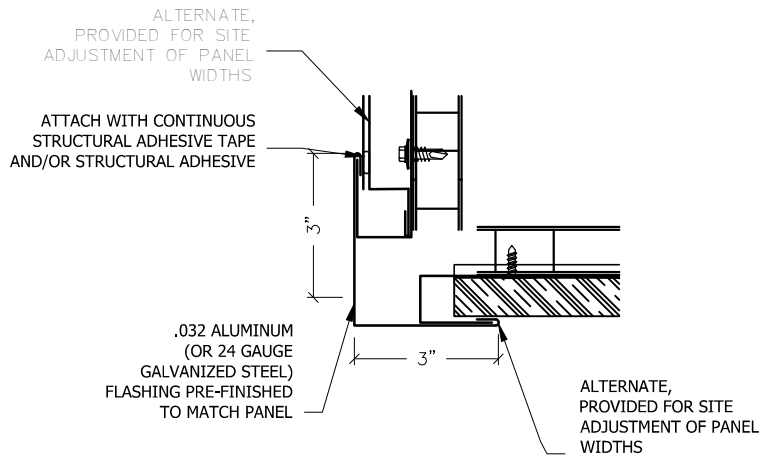
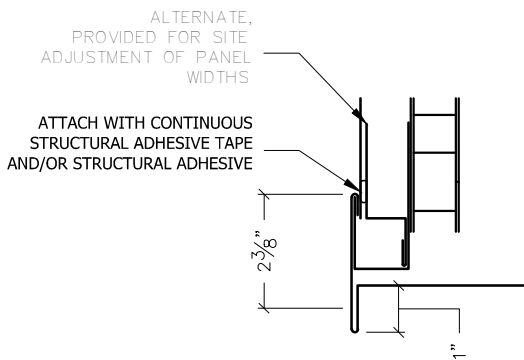
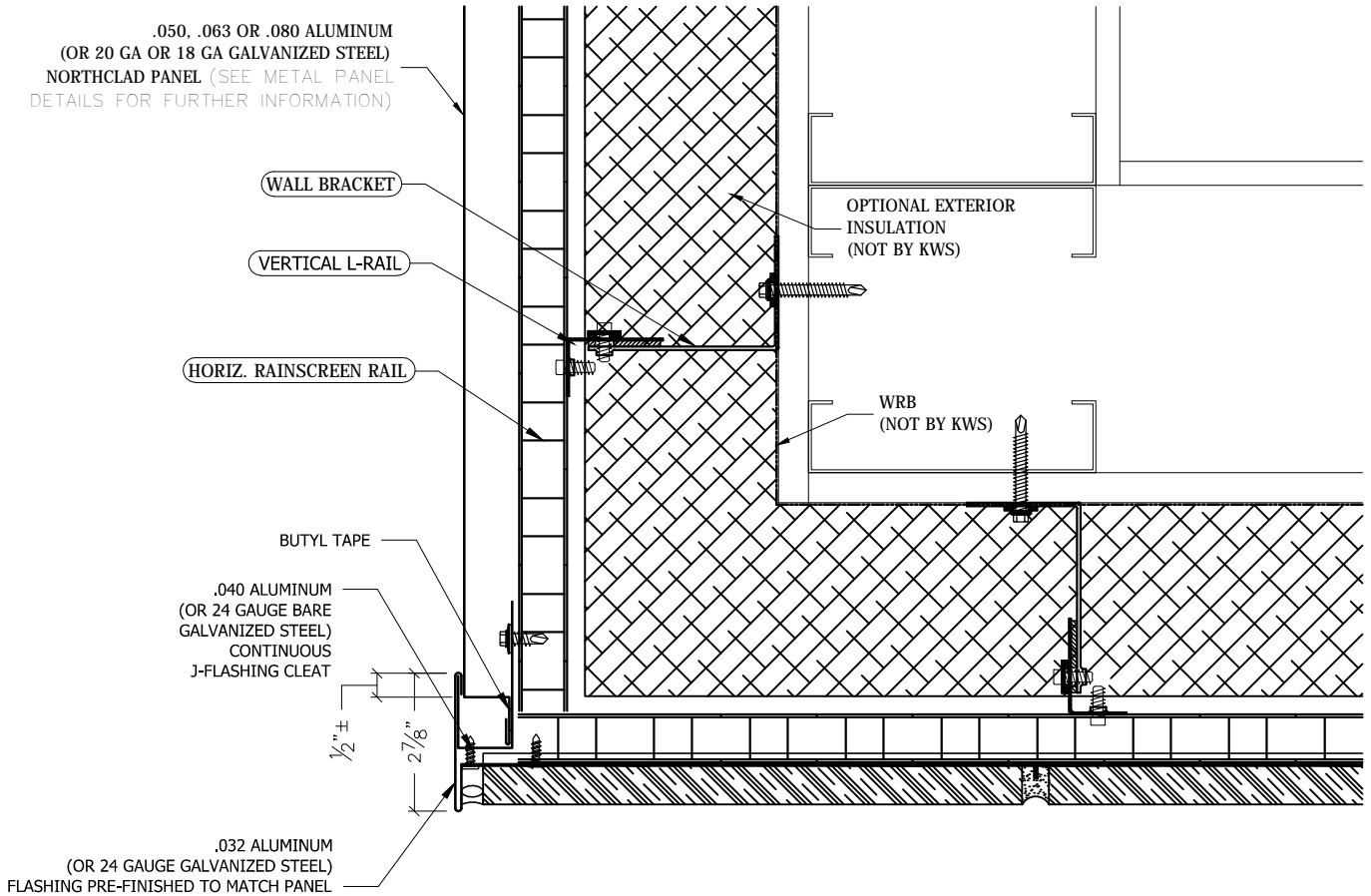


# BRICK PANELS with STOFIX®

## GUIDE DETAILS

Revision: December 08, 2010

www.knightwallsystems.com



16

### ALTERNATE O.S.C.

Scale: 3"=1'

**NOTE:**

THESE GUIDELINE DETAILS ARE PROVIDED FOR INFORMATION ONLY AND DO NOT REPLACE THE SERVICES OF A REGISTERED DESIGN PROFESSIONAL.

For multi-cladding transition details, or to download the CAD version of these details, please visit us online at [www.knightwallsystems.com](http://www.knightwallsystems.com)

© Knight Wall Systems  
Deer Park, WA - 509.262.0104  
PATENT PENDING

16

### METAL PANEL/BRICK O.S.C. TRANSITION

Scale: 3" = 1'-0" Drawn by: BN

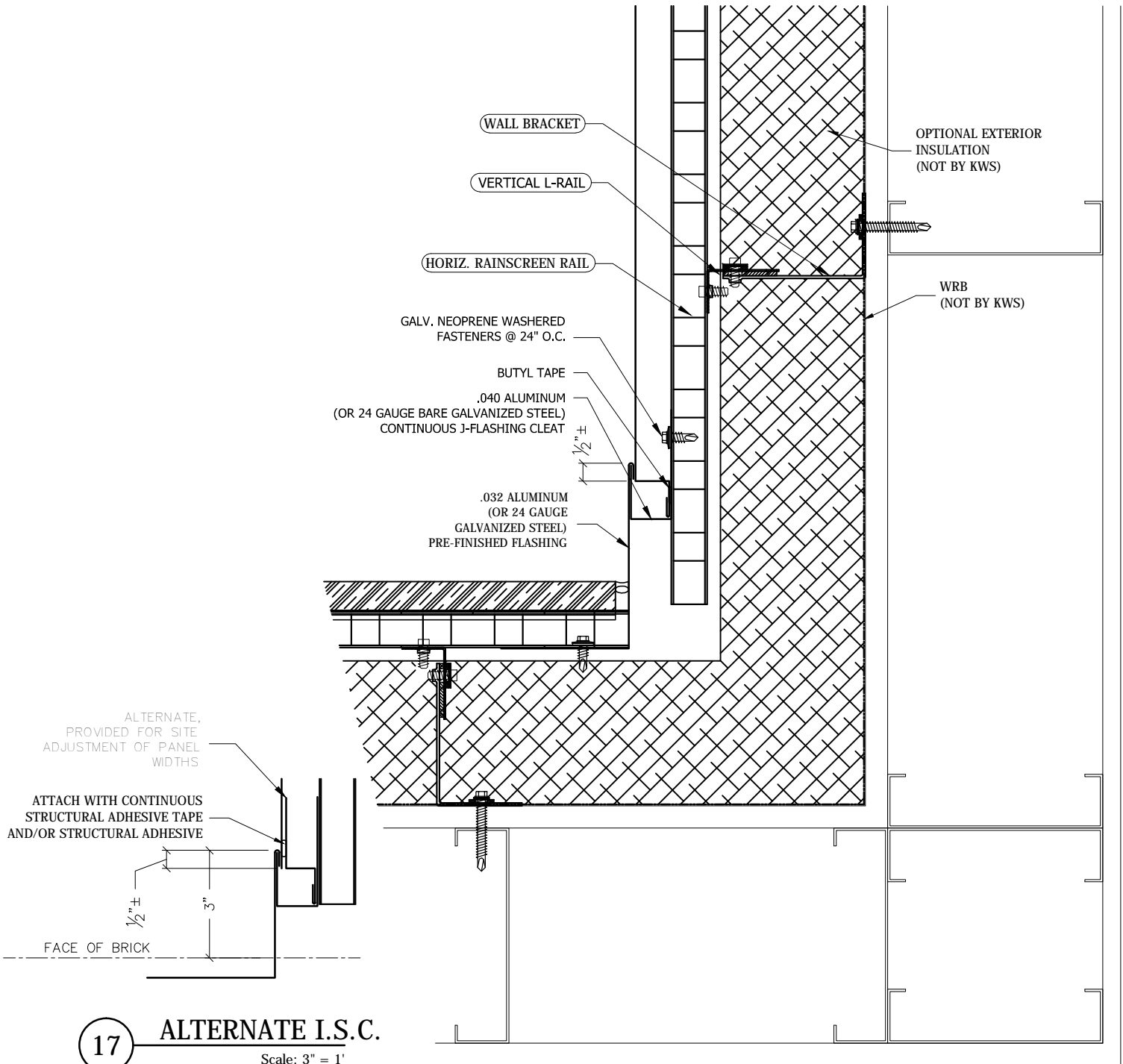


# BRICK PANELS with STOFIX®

## GUIDE DETAILS

Revision: December 08, 2010

www.knightwallsystems.com



**NOTE:**

THESE GUIDELINE DETAILS ARE PROVIDED FOR INFORMATION ONLY AND DO NOT REPLACE THE SERVICES OF A REGISTERED DESIGN PROFESSIONAL.

For multi-cladding transition details, or to download the CAD version of these details, please visit us online at [www.knightwallsystems.com](http://www.knightwallsystems.com)

© Knight Wall Systems  
Deer Park, WA - 509.262.0104  
PATENT PENDING

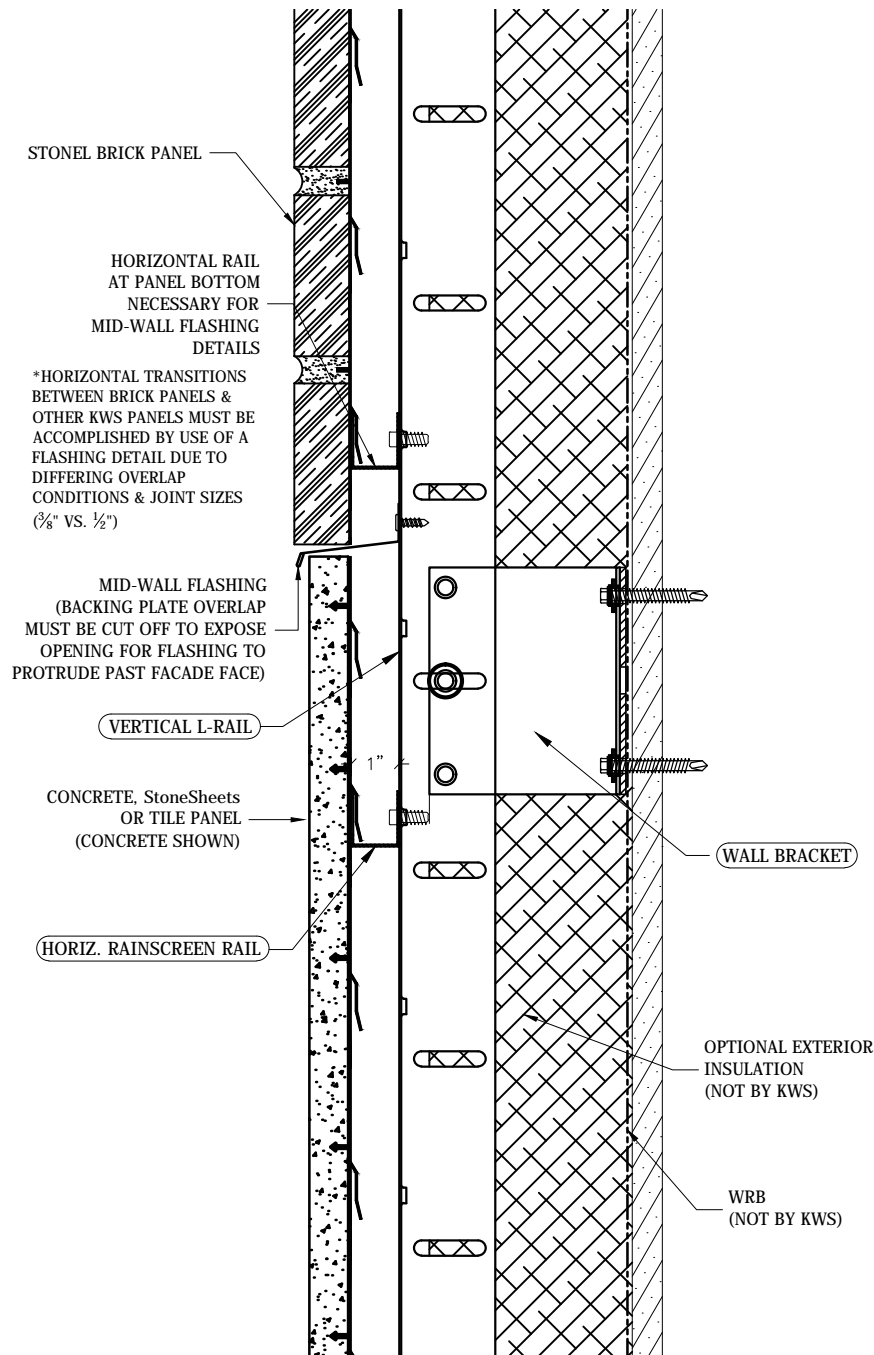


# BRICK PANELS with STOFIX®

## GUIDE DETAILS

Revision: December 08, 2010

www.knightwallsystems.com



**NOTE:**

THESE GUIDELINE DETAILS ARE PROVIDED FOR INFORMATION ONLY AND DO NOT REPLACE THE SERVICES OF A REGISTERED DESIGN PROFESSIONAL.

For multi-cladding transition details, or to download the CAD version of these details, please visit us online at [www.knightwallsystems.com](http://www.knightwallsystems.com)

© Knight Wall Systems  
Deer Park, WA - 509.262.0104  
PATENT PENDING

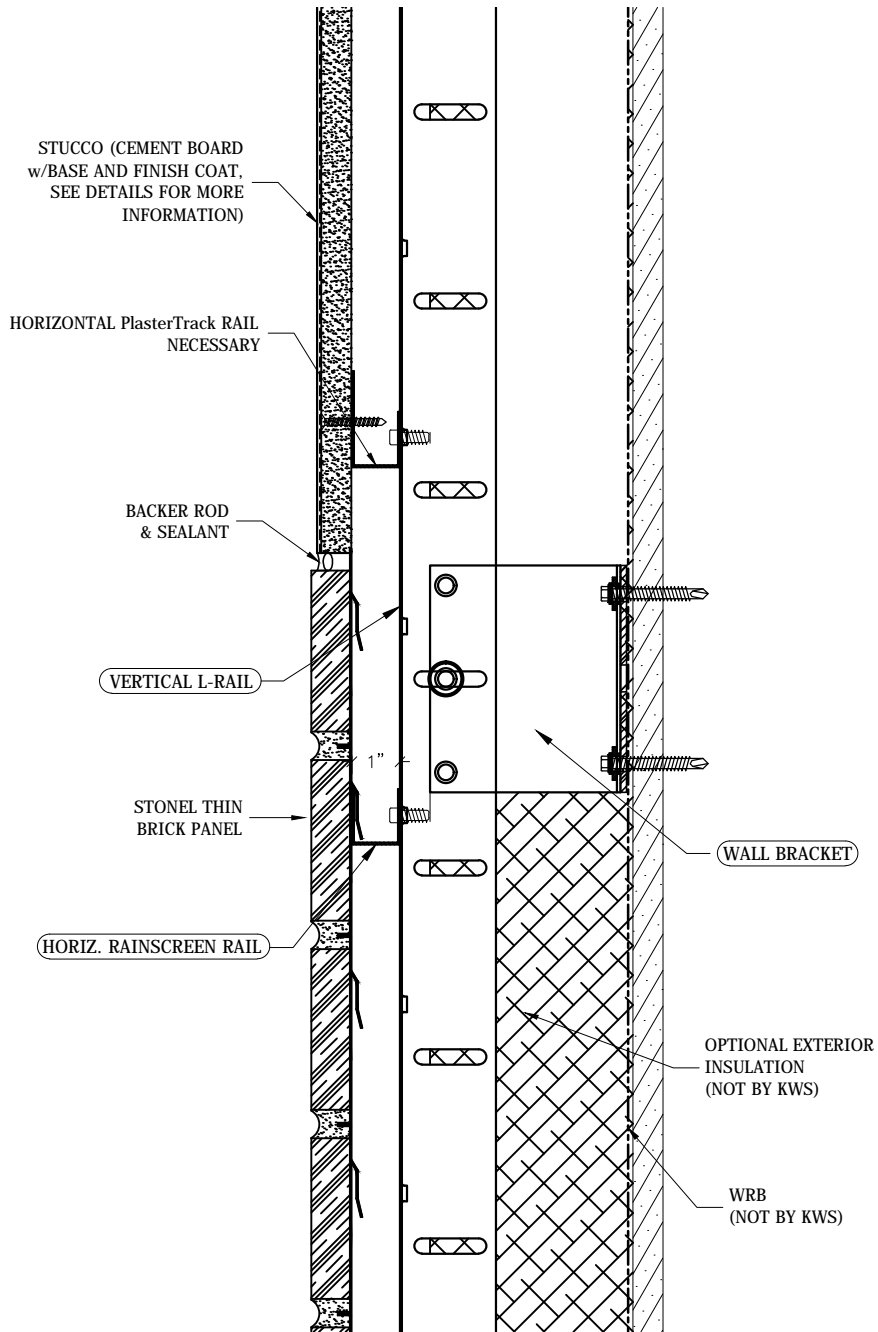


# BRICK PANELS with STOFIX®

## GUIDE DETAILS

Revision: December 08, 2010

www.knightwallsystems.com



**NOTE:**

THESE GUIDELINE DETAILS ARE PROVIDED FOR INFORMATION ONLY AND DO NOT REPLACE THE SERVICES OF A REGISTERED DESIGN PROFESSIONAL.

For multi-cladding transition details, or to download the CAD version of these details, please visit us online at [www.knightwallsystems.com](http://www.knightwallsystems.com)

© Knight Wall Systems  
Deer Park, WA - 509.262.0104  
PATENT PENDING

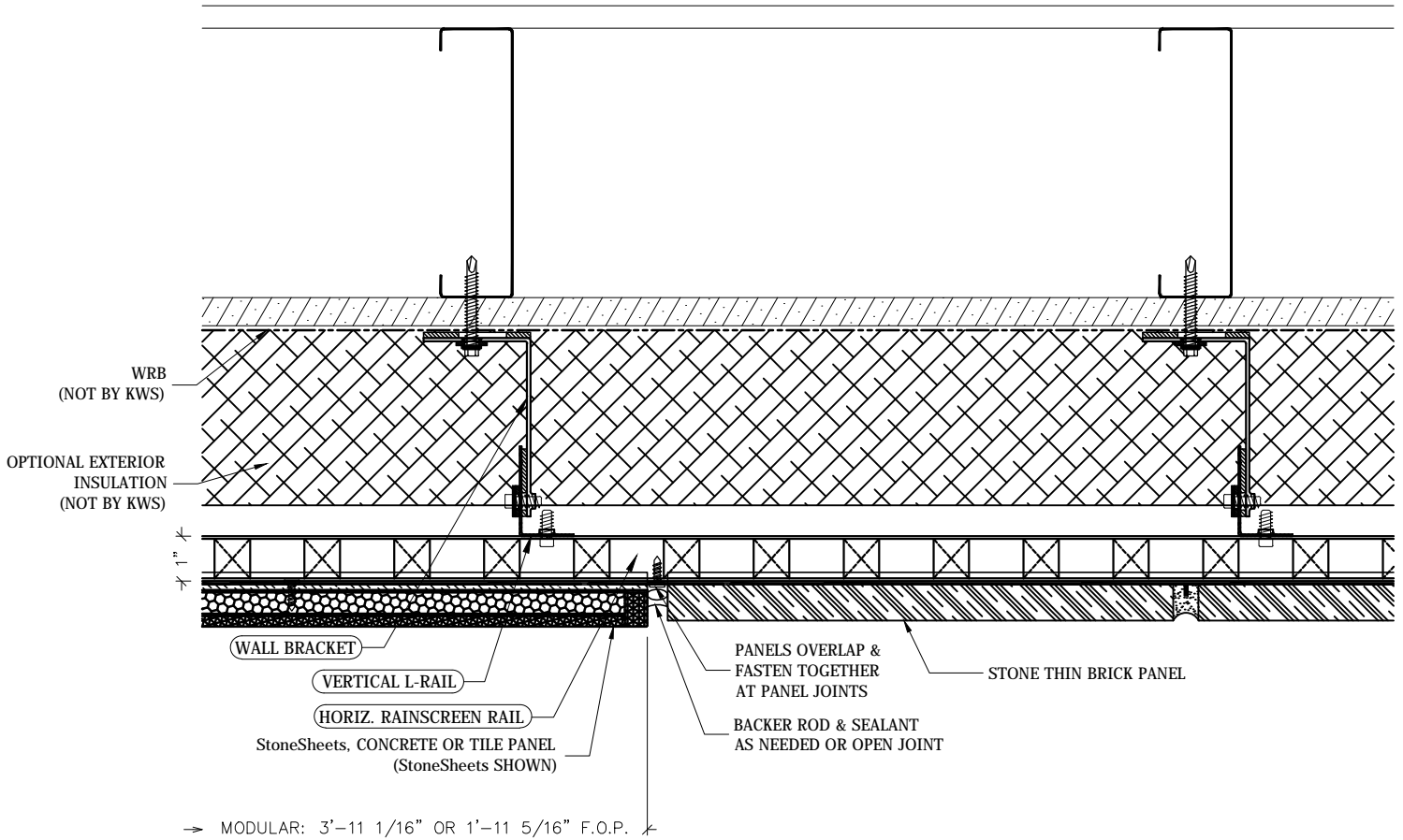


# BRICK PANELS with STOFIX®

## GUIDE DETAILS

Revision: December 08, 2010

www.knightwallsystems.com



**NOTE:**

THESE GUIDELINE DETAILS ARE PROVIDED FOR INFORMATION ONLY AND DO NOT REPLACE THE SERVICES OF A REGISTERED DESIGN PROFESSIONAL.

For multi-cladding transition details, or to download the CAD version of these details, please visit us online at [www.knightwallsystems.com](http://www.knightwallsystems.com)

© Knight Wall Systems  
Deer Park, WA - 509.262.0104  
PATENT PENDING

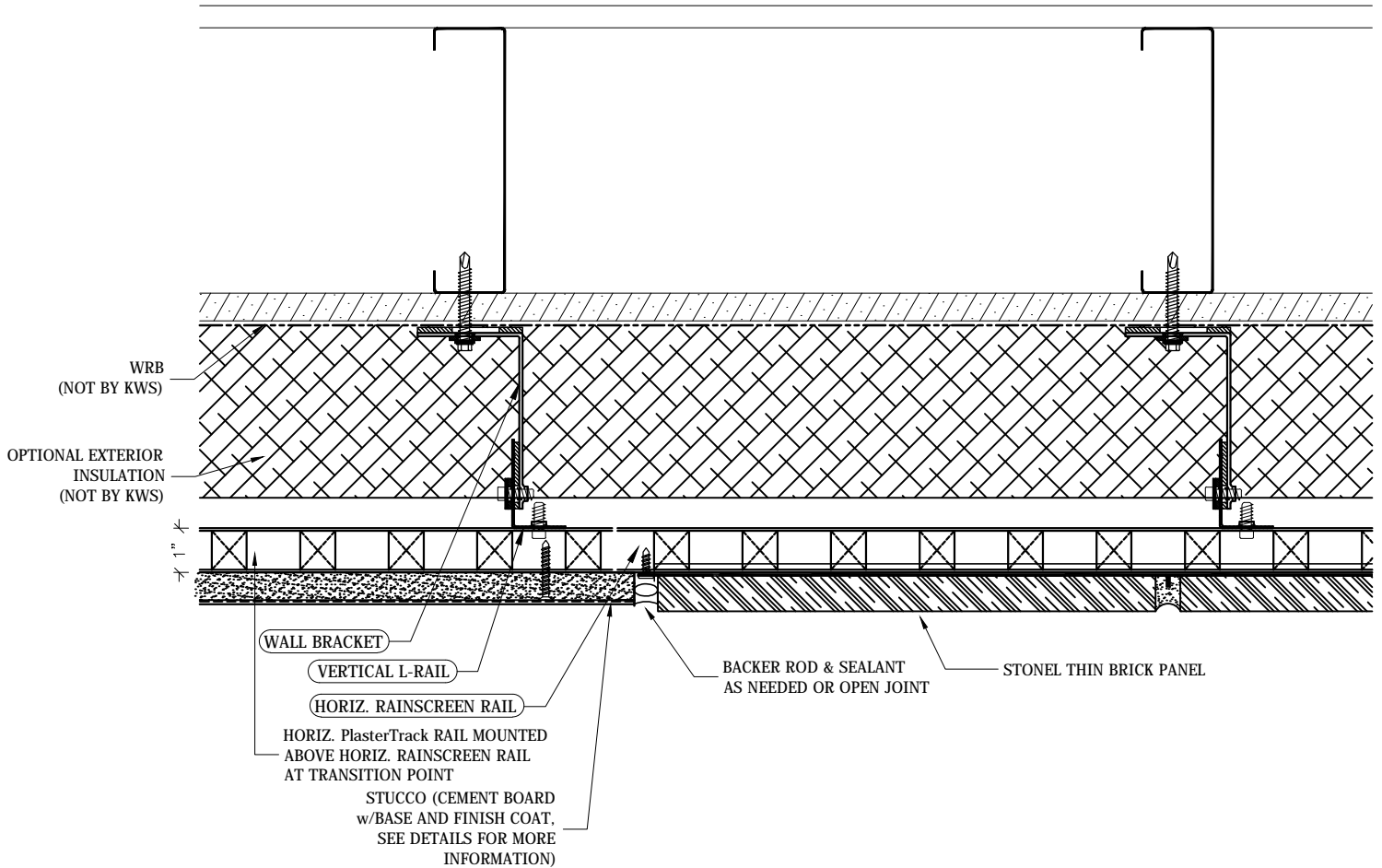


# BRICK PANELS with STOFIX®

## GUIDE DETAILS

Revision: December 08, 2010

www.knightwallsystems.com



**NOTE:**

THESE GUIDELINE DETAILS ARE PROVIDED FOR INFORMATION ONLY AND DO NOT REPLACE THE SERVICES OF A REGISTERED DESIGN PROFESSIONAL.

For multi-cladding transition details, or to download the CAD version of these details, please visit us online at [www.knightwallsystems.com](http://www.knightwallsystems.com)

© Knight Wall Systems  
Deer Park, WA - 509.262.0104  
PATENT PENDING

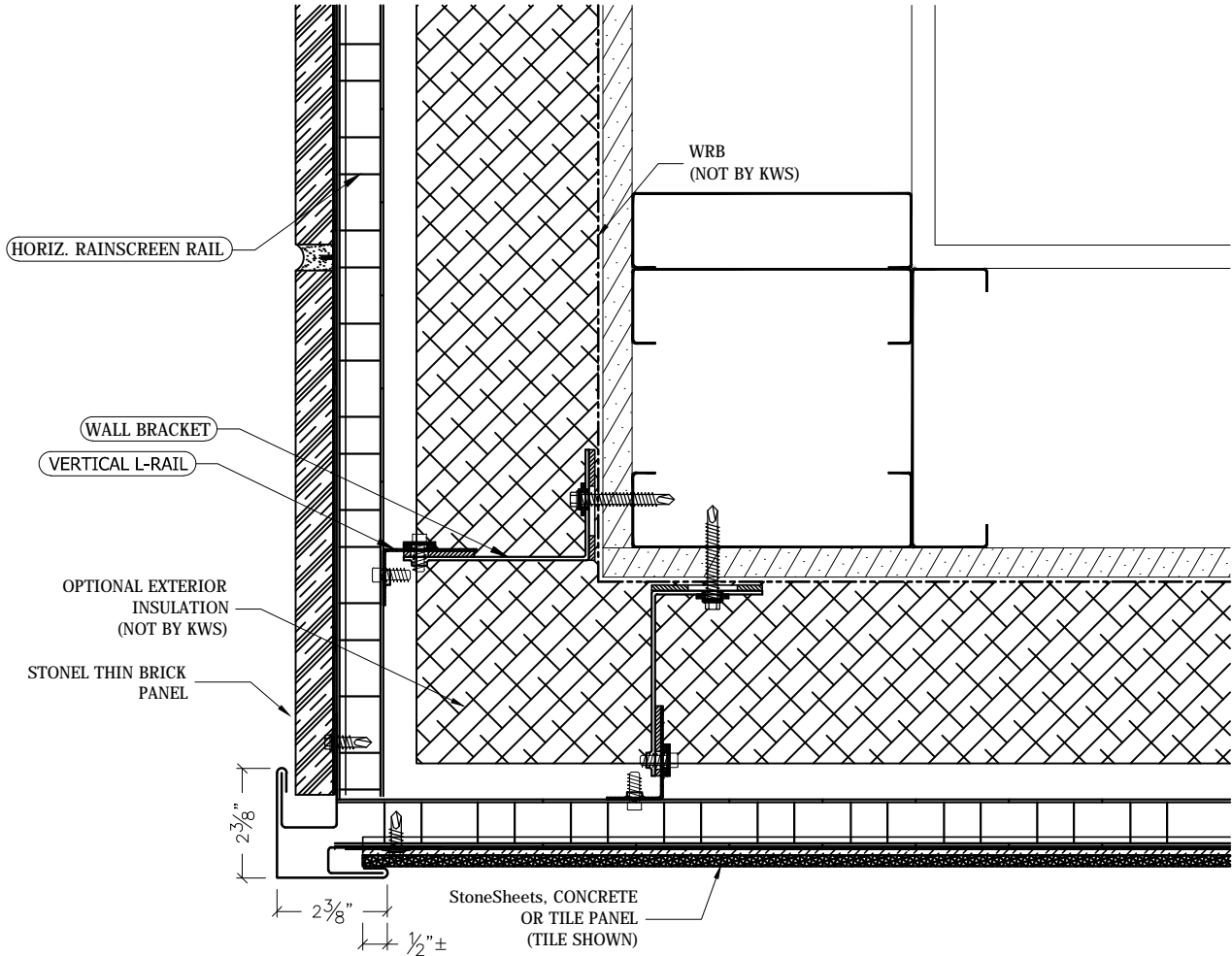


# BRICK PANELS with STOFIX®

## GUIDE DETAILS

Revision: December 08, 2010

www.knightwallsystems.com



**NOTE:**

THESE GUIDELINE DETAILS ARE PROVIDED FOR INFORMATION ONLY AND DO NOT REPLACE THE SERVICES OF A REGISTERED DESIGN PROFESSIONAL.

For multi-cladding transition details, or to download the CAD version of these details, please visit us online at [www.knightwallsystems.com](http://www.knightwallsystems.com)

© Knight Wall Systems  
Deer Park, WA - 509.262.0104  
PATENT PENDING

**22A**

**BRICK TO CONC./StnSht/TILE O.S.C. TRANS.**

Scale: 3" = 1'-0" Drawn by: BN

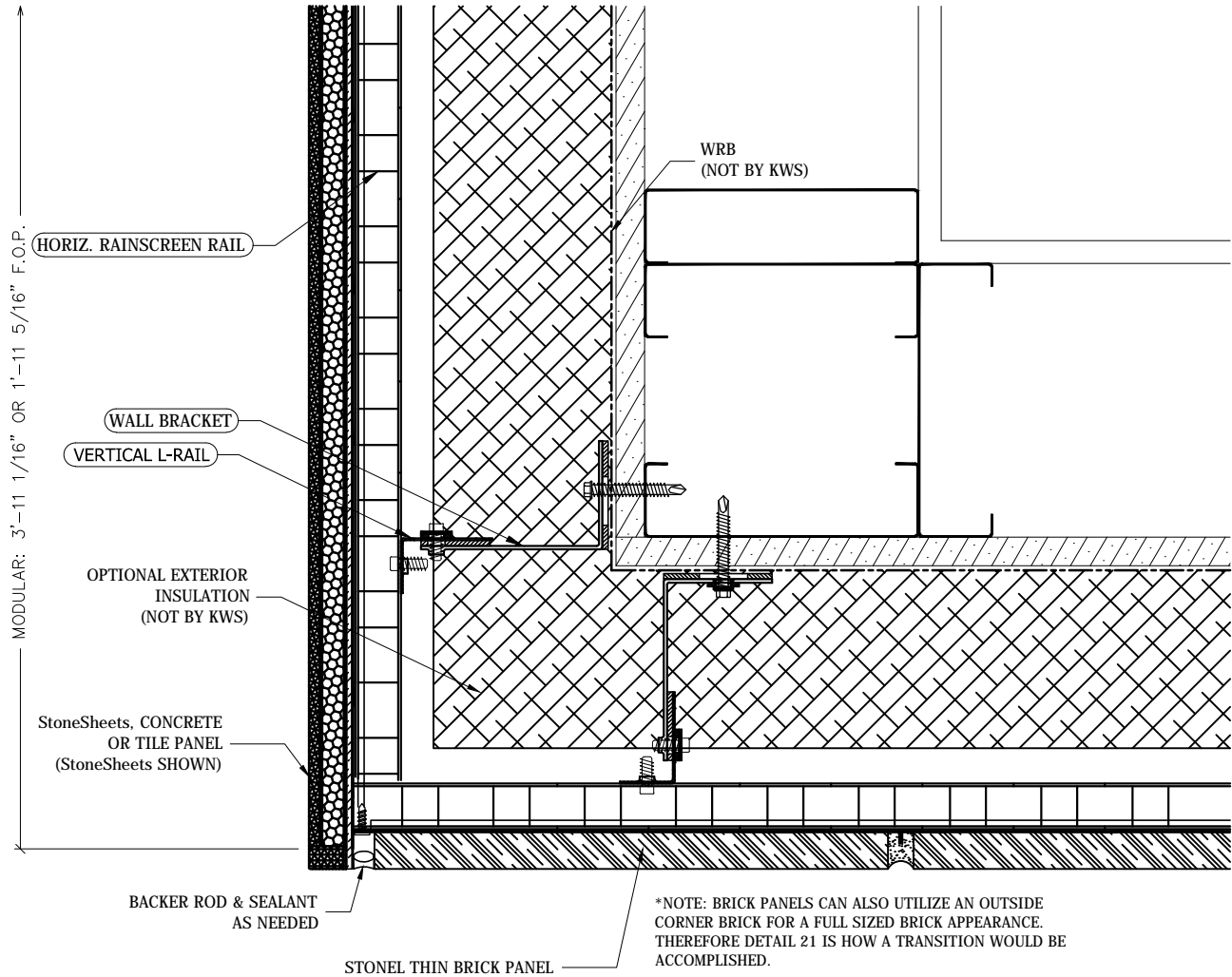


# BRICK PANELS with STOFIX®

## GUIDE DETAILS

Revision: December 08, 2010

www.knightwallsystems.com



**NOTE:**

THESE GUIDELINE DETAILS ARE PROVIDED FOR INFORMATION ONLY AND DO NOT REPLACE THE SERVICES OF A REGISTERED DESIGN PROFESSIONAL.

For multi-cladding transition details, or to download the CAD version of these details, please visit us online at [www.knightwallsystems.com](http://www.knightwallsystems.com)

© Knight Wall Systems  
Deer Park, WA - 509.262.0104  
PATENT PENDING

**22B**

**BRICK TO CONC./StnSht/TILE O.S.C. TRANS.**

Scale: 3" = 1'-0" Drawn by: BN

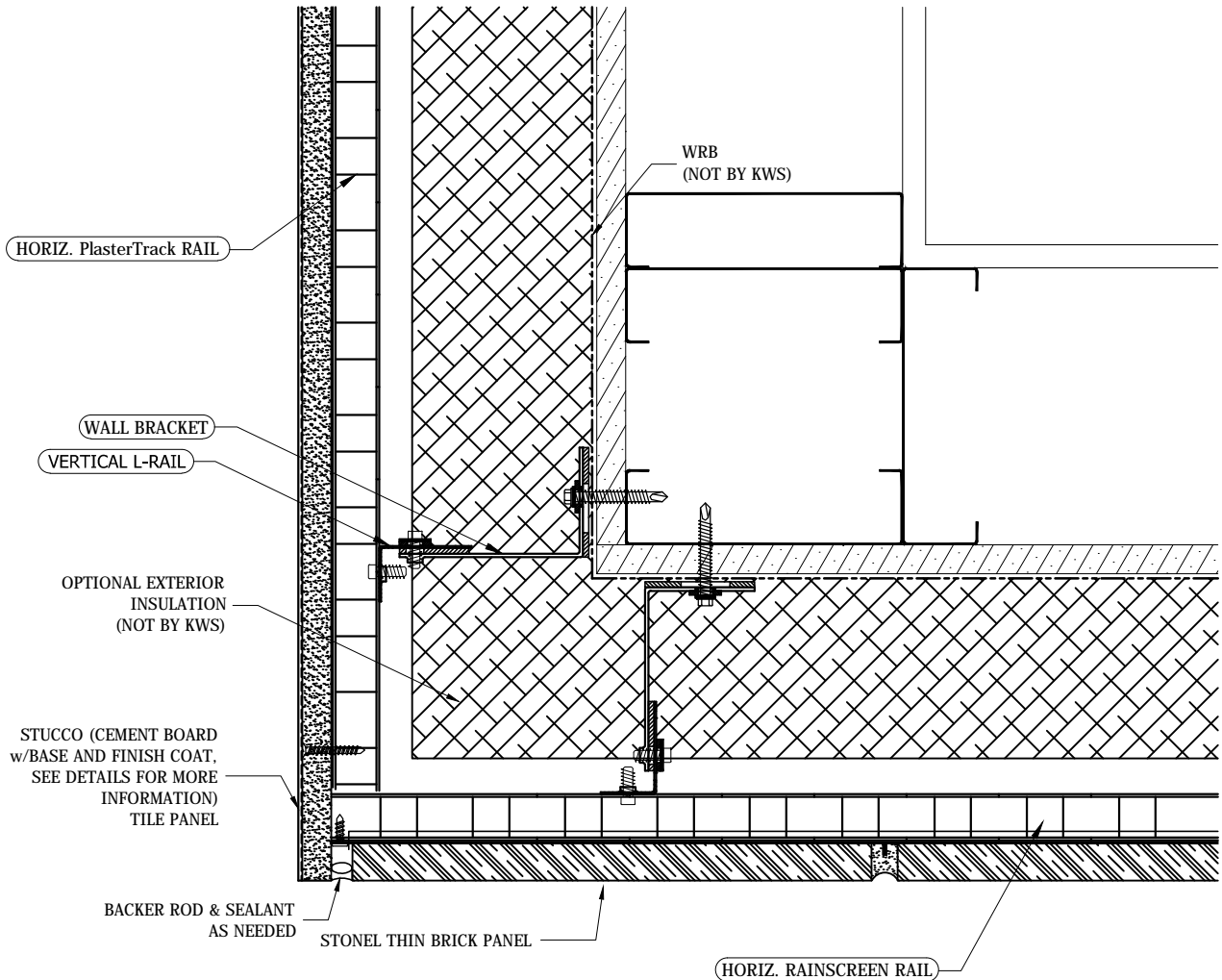


# BRICK PANELS with STOFIX®

## GUIDE DETAILS

Revision: December 08, 2010

www.knightwallsystems.com



**NOTE:**

THESE GUIDELINE DETAILS ARE PROVIDED FOR INFORMATION ONLY AND DO NOT REPLACE THE SERVICES OF A REGISTERED DESIGN PROFESSIONAL.

For multi-cladding transition details, or to download the CAD version of these details, please visit us online at [www.knightwallsystems.com](http://www.knightwallsystems.com)

© Knight Wall Systems  
Deer Park, WA - 509.262.0104  
PATENT PENDING

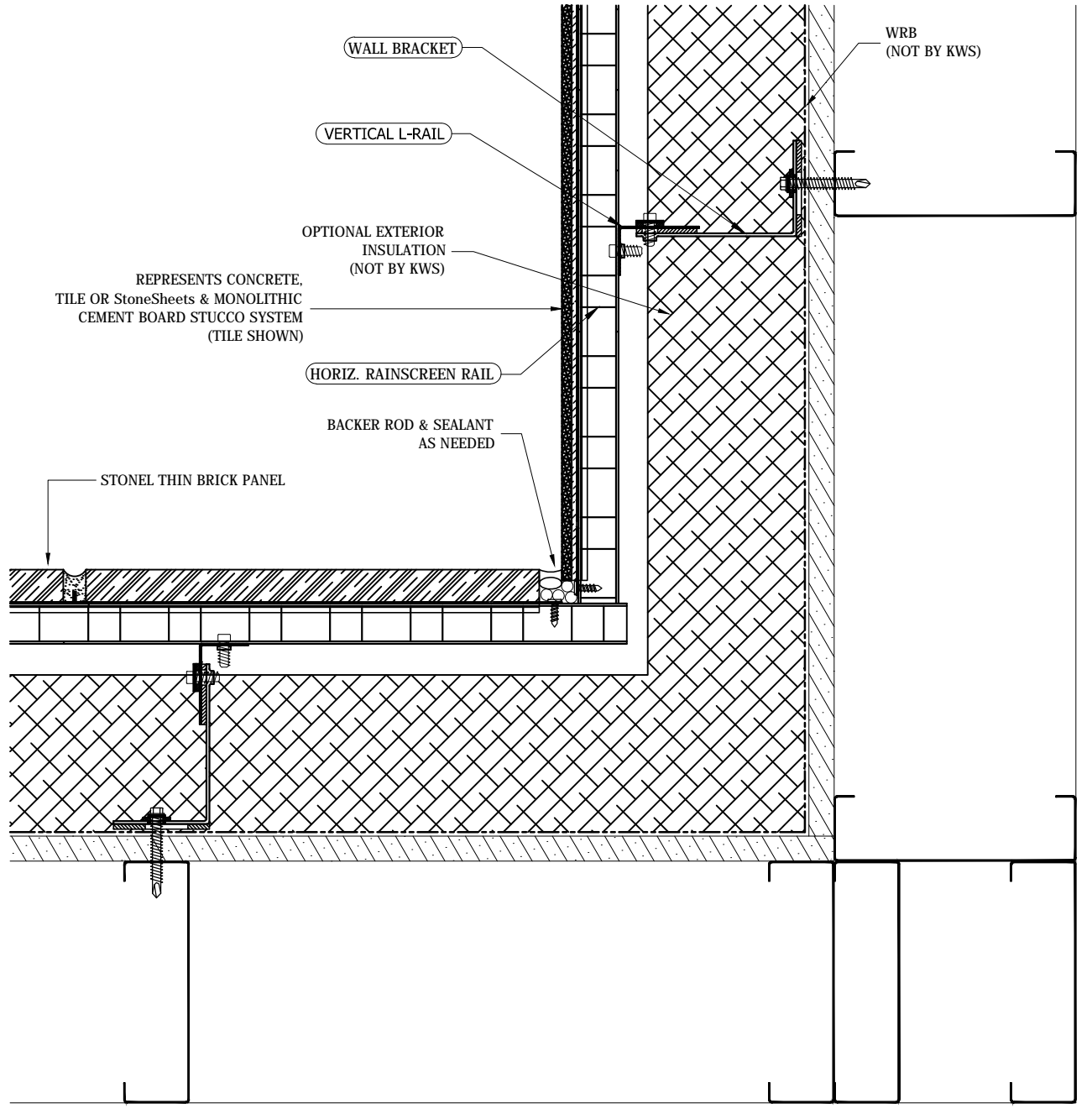


# BRICK PANELS with STOFIX®

## GUIDE DETAILS

Revision: December 08, 2010

www.knightwallsystems.com



**NOTE:**  
 THESE GUIDELINE DETAILS ARE PROVIDED FOR INFORMATION ONLY AND DO NOT REPLACE THE SERVICES OF A REGISTERED DESIGN PROFESSIONAL.  
 For multi-cladding transition details, or to download the CAD version of these details, please visit us online at [www.knightwallsystems.com](http://www.knightwallsystems.com)  
 © Knight Wall Systems  
 Deer Park, WA - 509.262.0104  
 PATENT PENDING

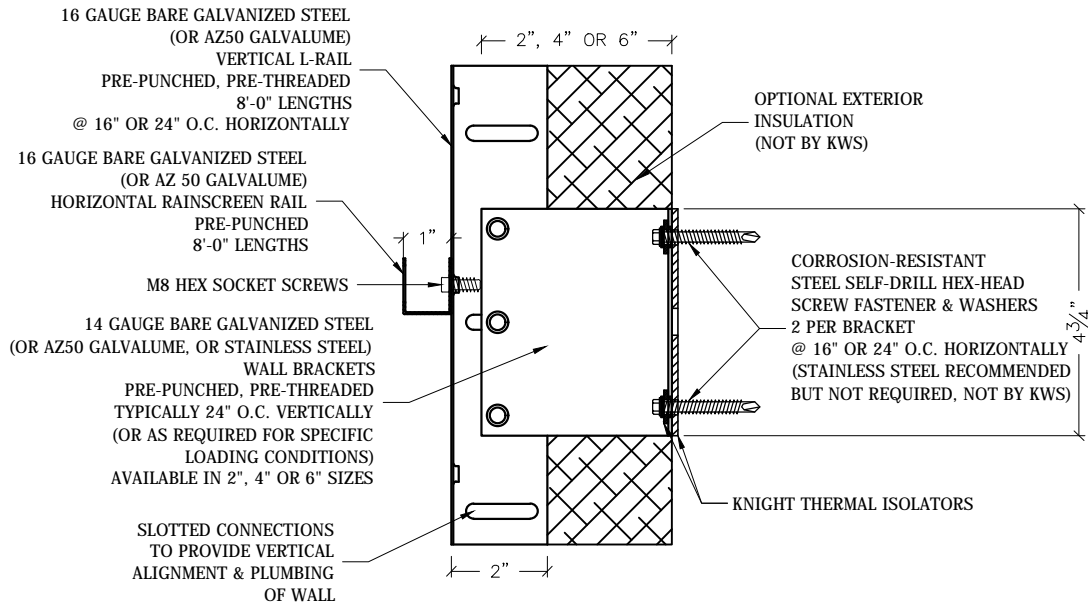


# BRICK PANELS with STOFIX®

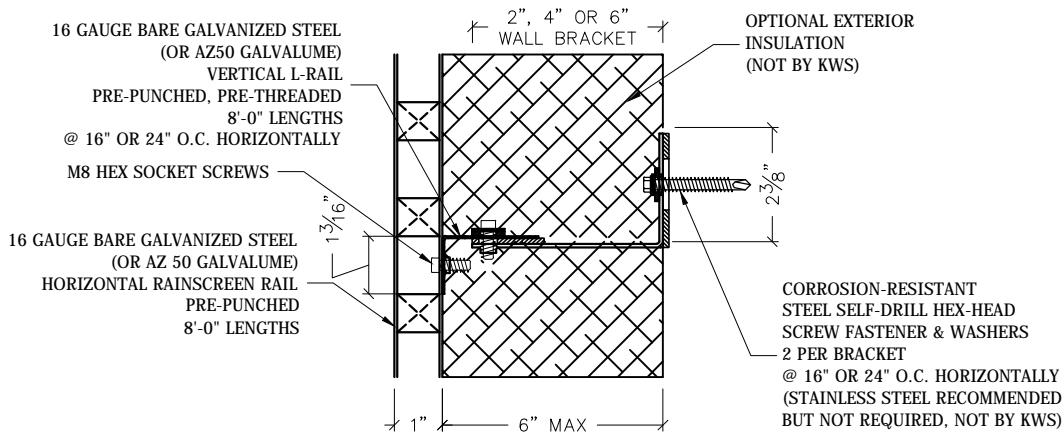
## GUIDE DETAILS

Revision: December 08, 2010

www.knightwallsystems.com



**SECTION VIEW**  
Scale: 3" = 1'



**PLAN VIEW**  
Scale: 3" = 1'

**NOTE:**  
THESE GUIDELINE DETAILS ARE PROVIDED FOR INFORMATION ONLY AND DO NOT REPLACE THE SERVICES OF A REGISTERED DESIGN PROFESSIONAL.  
For multi-cladding transition details, or to download the CAD version of these details, please visit us online at [www.knightwallsystems.com](http://www.knightwallsystems.com)  
© Knight Wall Systems  
Deer Park, WA - 509.262.0104  
PATENT PENDING

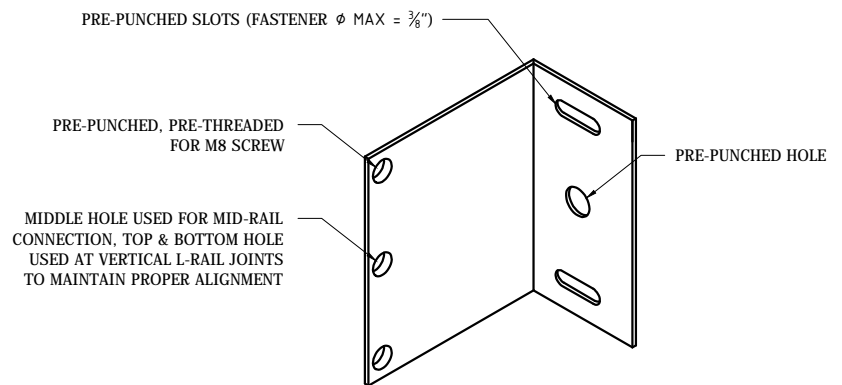
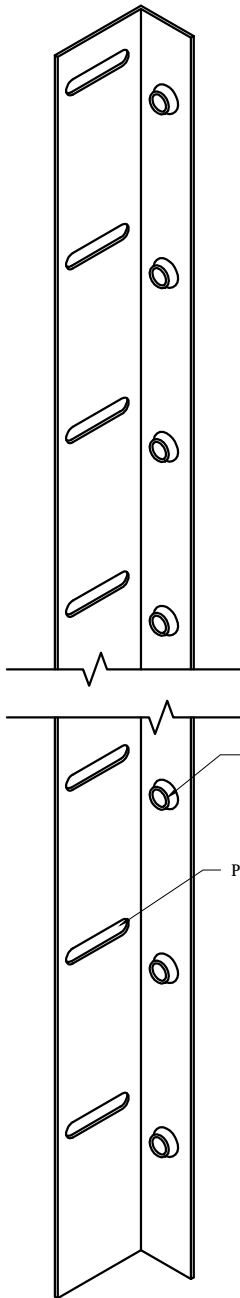


# BRICK PANELS with STOFIX®

## GUIDE DETAILS

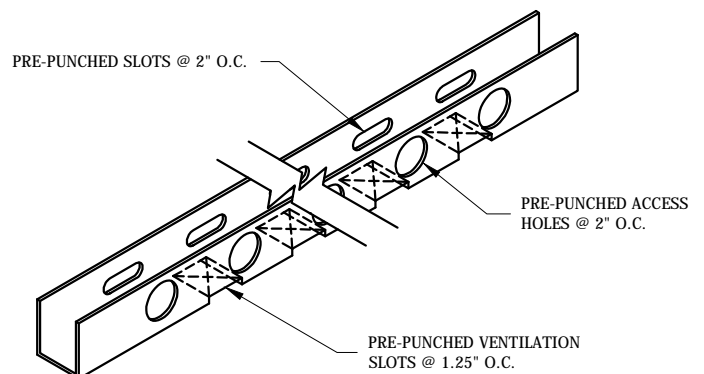
Revision: December 08, 2010

www.knightwallsystems.com



**1 WALL BRACKET**  
Scale: 3" = 1'

PRE-PUNCHED & PRE-THREADED FOR M8 SCREW @ 3.937" O.C.  
PRE-PUNCHED SLOT @ 3.937" O.C.



**3 HORIZ. RAIL**  
Scale: 3" = 1'

**NOTE:**  
THESE GUIDELINE DETAILS ARE PROVIDED FOR INFORMATION ONLY AND DO NOT REPLACE THE SERVICES OF A REGISTERED DESIGN PROFESSIONAL.  
For multi-cladding transition details, or to download the CAD version of these details, please visit us online at [www.knightwallsystems.com](http://www.knightwallsystems.com)  
© Knight Wall Systems  
Deer Park, WA - 509.262.0104  
PATENT PENDING



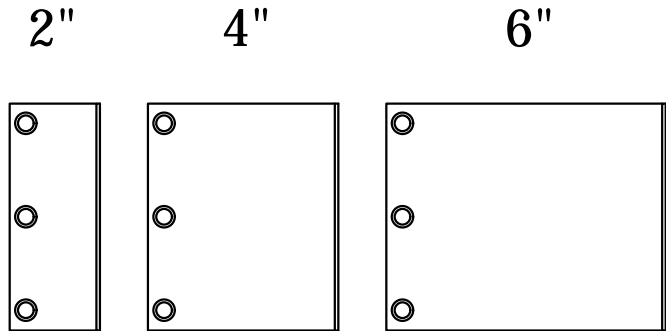
# BRICK PANELS with STOFIX®

GUIDE DETAILS

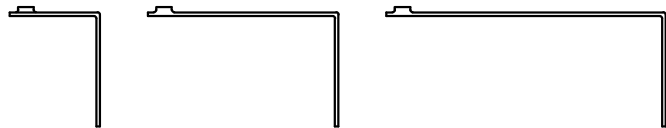
Revision: December 08, 2010

[www.knightwallsystems.com](http://www.knightwallsystems.com)

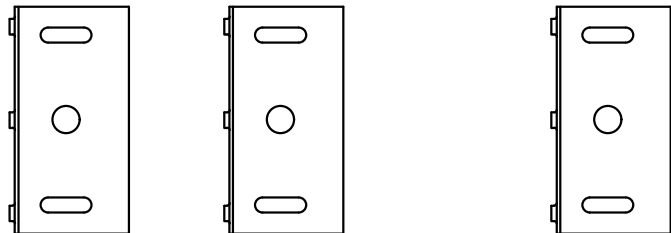
SIDE (SECTION) VIEW



PROFILE (PLAN) VIEW



FRONT (ELEVATION) VIEW



**NOTE:**

THESE GUIDELINE DETAILS ARE PROVIDED FOR INFORMATION ONLY AND DO NOT REPLACE THE SERVICES OF A REGISTERED DESIGN PROFESSIONAL.

For multi-cladding transition details, or to download the CAD version of these details, please visit us online at [www.knightwallsystems.com](http://www.knightwallsystems.com)

© Knight Wall Systems  
Deer Park, WA - 509.262.0104  
PATENT PENDING