

A RS-Rail - AXONOMETRIC
Scale: NTS

- TYPICAL SECTION VIEW
Scale: 3"=1'-0"

PARTS LIST:

- | | |
|--|---|
| <ul style="list-style-type: none"> (A) RS-Rail (B) STAINLESS STEEL CAP SCREW BY KWS (C) CI-Girt™ (D) THERMAL ISOLATOR AT EACH WALL FASTENER, TYP. (E) NO. 12 CORROSION RESISTANT FASTENER. STAINLESS STEEL FASTENER AVAILABLE WHICH PROVIDES SUPERIOR CORROSION RESISTANCE AND IMPROVED THERMAL PERFORMANCE. CONTACT KWS FOR MORE INFORMATION. | <ul style="list-style-type: none"> (F) BACKING ATTACHMENT FRAME FORMED & EMBEDDED TO KNIGHT™ SERIES CONCRETE PANEL (G) DOW STYROFOAM™ SPRAY POLYURETHANE FOAM CM SERIES (H) DOW THERMAX™ (ci) (EXTERIOR INSULATION) (I) KNIGHT™ SERIES CONCRETE PANEL (J) DOW WEATHERMATE™ STRAIGHT FLASHING (AT JOINTS IN DOW THERMAX™ & WINDOW DETAILS) |
|--|---|

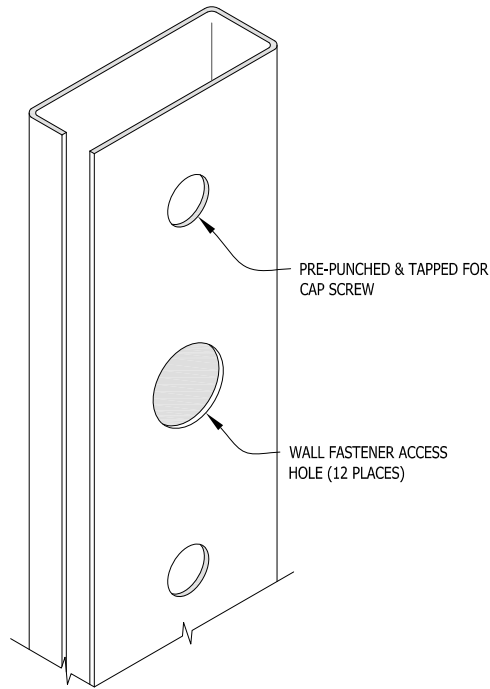
NOTE:
THESE GUIDE DETAILS ARE PROVIDED FOR INFORMATION ONLY. PROJECT SPECIFIC DESIGNS ARE AVAILABLE THAT ADDRESS STRUCTURAL ATTACHMENT, THERMAL PERFORMANCE AND WEATHERPROOFING. CONTACT KWS FOR FURTHER DETAILS. For multi-cladding transition details, or to download the CAD version of these details, please visit us online at www.knightwallsystems.com
© Knight Wall Systems
Deer Park, WA - 509.262.0104
PATENT PENDING

1 PARTS LIST - WALL SECTION Scale: As Noted

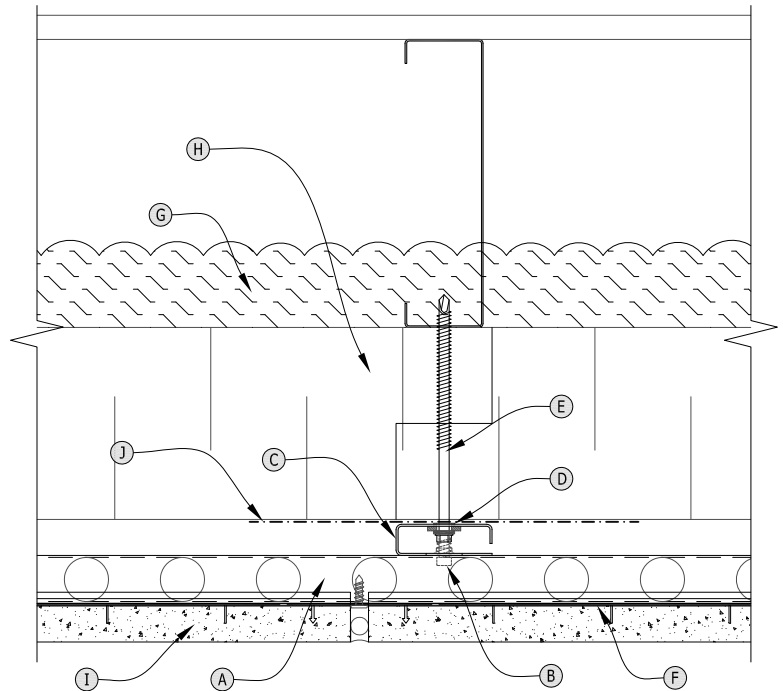
DATE: 03/31/11



**KNIGHT™ SERIES
CONCRETE PANELS
THERMAX™ WALL SYSTEM
GUIDE DETAIL**



C CI Girt - AXONOMETRIC
Scale: NTS



- TYPICAL PLAN VIEW
Scale: 3"=1'-0"

PARTS LIST:

- | | |
|--|---|
| <ul style="list-style-type: none"> (A) RS-Rail (B) STAINLESS STEEL CAP SCREW BY KWS (C) CI-Girt™ (D) THERMAL ISOLATOR AT EACH WALL FASTENER, TYP. (E) NO. 12 CORROSION RESISTANT FASTENER. STAINLESS STEEL FASTENER AVAILABLE WHICH PROVIDES SUPERIOR CORROSION RESISTANCE AND IMPROVED THERMAL PERFORMANCE. CONTACT KWS FOR MORE INFORMATION. | <ul style="list-style-type: none"> (F) BACKING ATTACHMENT FRAME FORMED & EMBEDDED TO KNIGHT™ SERIES CONCRETE PANEL (G) DOW STYROFOAM™ SPRAY POLYURETHANE FOAM CM SERIES (H) DOW THERMAX™ (ci) (EXTERIOR INSULATION) (I) KNIGHT™ SERIES CONCRETE PANEL (J) DOW WEATHERMATE™ STRAIGHT FLASHING (AT JOINTS IN DOW THERMAX™ & WINDOW DETAILS) |
|--|---|

NOTE:
THESE GUIDE DETAILS ARE PROVIDED FOR INFORMATION ONLY. PROJECT SPECIFIC DESIGNS ARE AVAILABLE THAT ADDRESS STRUCTURAL ATTACHMENT, THERMAL PERFORMANCE AND WEATHERPROOFING. CONTACT KWS FOR FURTHER DETAILS. For multi-cladding transition details, or to download the CAD version of these details, please visit us online at www.knightwallsystems.com
© Knight Wall Systems
Deer Park, WA - 509.262.0104
PATENT PENDING

2

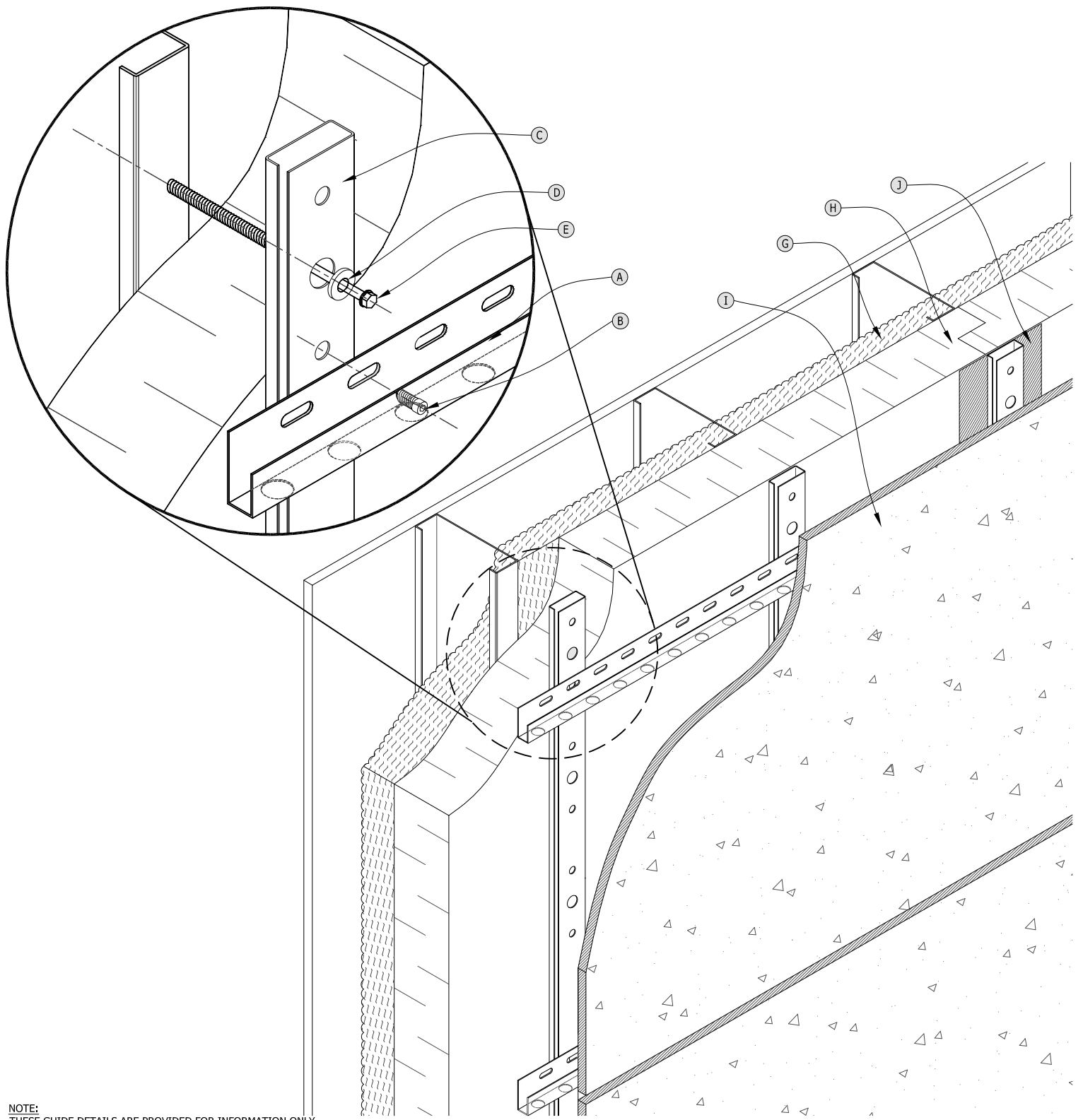
PARTS LIST - WALL PLAN

Scale: As Noted

DATE: 03/31/11



**KNIGHT™ SERIES
CONCRETE PANELS
THERMAX™ WALL SYSTEM
GUIDE DETAIL**



NOTE:
 THESE GUIDE DETAILS ARE PROVIDED FOR INFORMATION ONLY.
 PROJECT SPECIFIC DESIGNS ARE AVAILABLE THAT ADDRESS
 STRUCTURAL ATTACHMENT, THERMAL PERFORMANCE AND
 WEATHERPROOFING. CONTACT KWS FOR FURTHER DETAILS.
 For multi-cladding transition details, or to download the CAD version
 of these details, please visit us online at
www.knightwallsystems.com
 © Knight Wall Systems
 Deer Park, WA - 509.262.0104
 PATENT PENDING

3

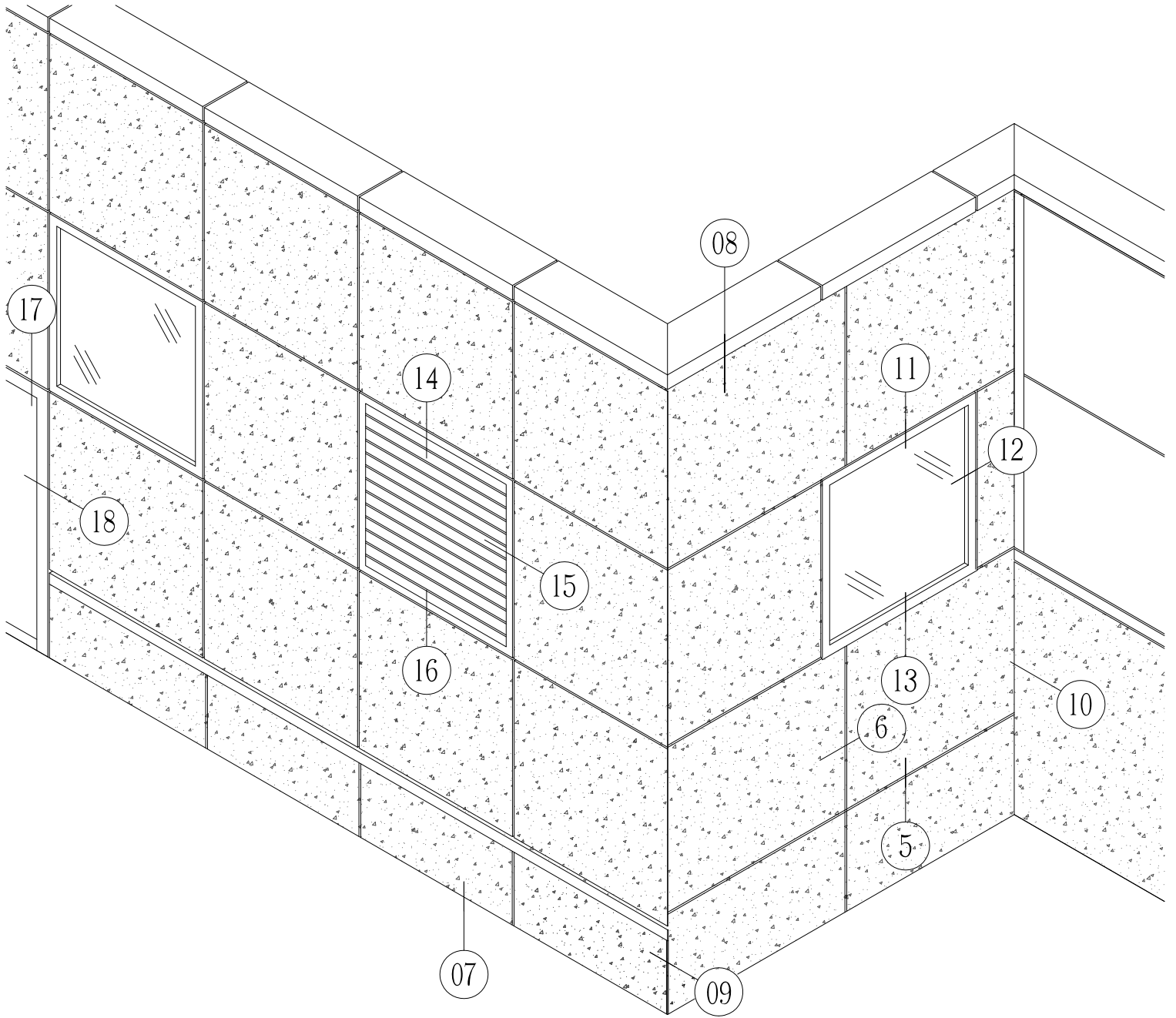
WALL - AXONOMETRIC

Scale: NTS

DATE: 03/31/11



KNIGHT™ SERIES
 CONCRETE PANELS
 THERMAX™ WALL SYSTEM
 GUIDE DETAIL



NOTE:
 THESE GUIDE DETAILS ARE PROVIDED FOR INFORMATION ONLY.
 PROJECT SPECIFIC DESIGNS ARE AVAILABLE THAT ADDRESS
 STRUCTURAL ATTACHMENT, THERMAL PERFORMANCE AND
 WEATHERPROOFING. CONTACT KWS FOR FURTHER DETAILS.
 For multi-cladding transition details, or to download the CAD version
 of these details, please visit us online at
www.knightwallsystems.com
 © Knight Wall Systems
 Deer Park, WA - 509.262.0104
 PATENT PENDING

4

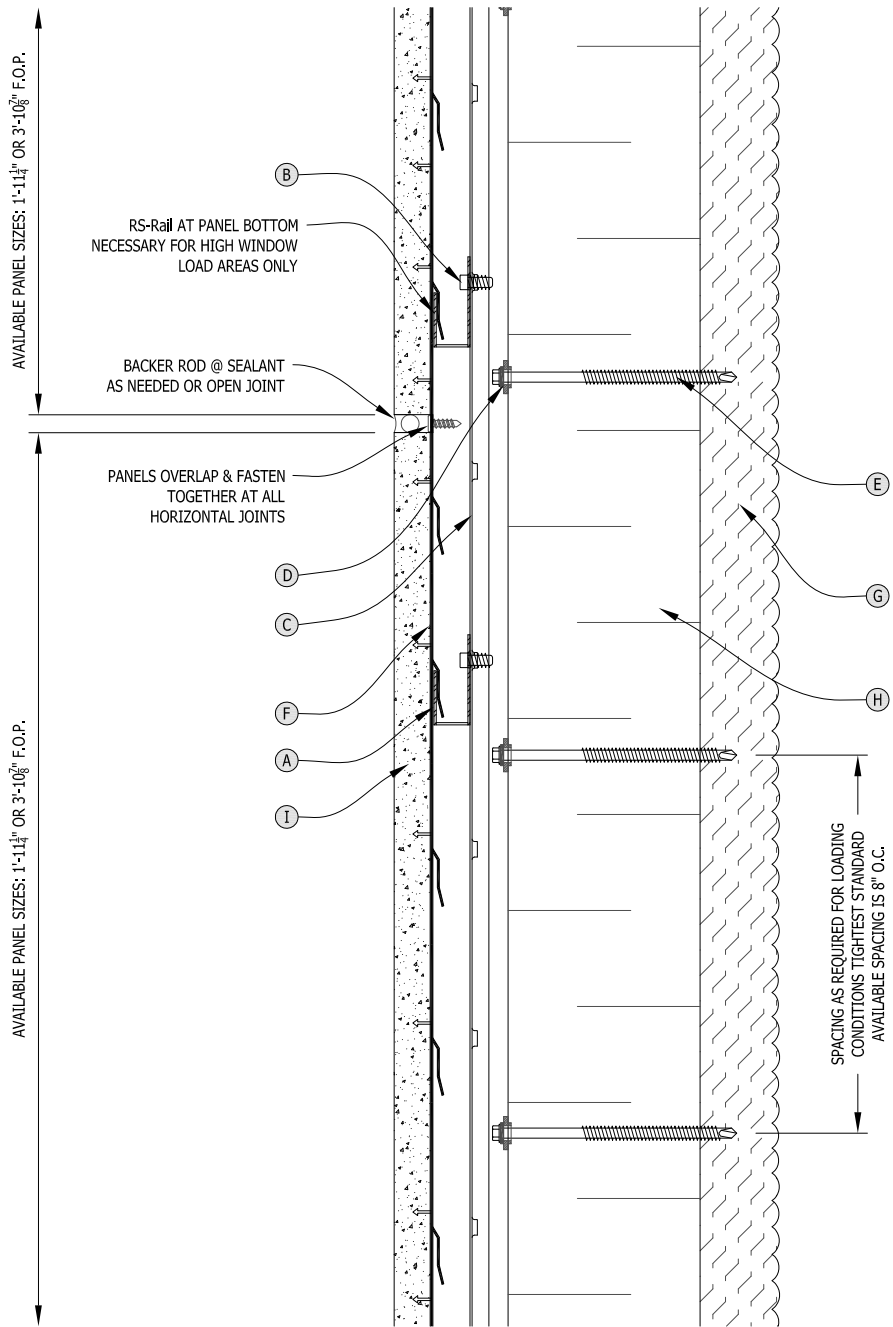
DETAIL REFERENCES

Scale: NTS

DATE: 03/31/11



KNIGHT™ SERIES
 CONCRETE PANELS
 THERMAX™ WALL SYSTEM
 GUIDE DETAIL



NOTE:
 THESE GUIDE DETAILS ARE PROVIDED FOR INFORMATION ONLY.
 PROJECT SPECIFIC DESIGNS ARE AVAILABLE THAT ADDRESS
 STRUCTURAL ATTACHMENT, THERMAL PERFORMANCE AND
 WEATHERPROOFING. CONTACT KWS FOR FURTHER DETAILS.
 For multi-cladding transition details, or to download the CAD version
 of these details, please visit us online at
www.knightwallsystems.com
 © Knight Wall Systems
 Deer Park, WA - 509.262.0104
 PATENT PENDING

5

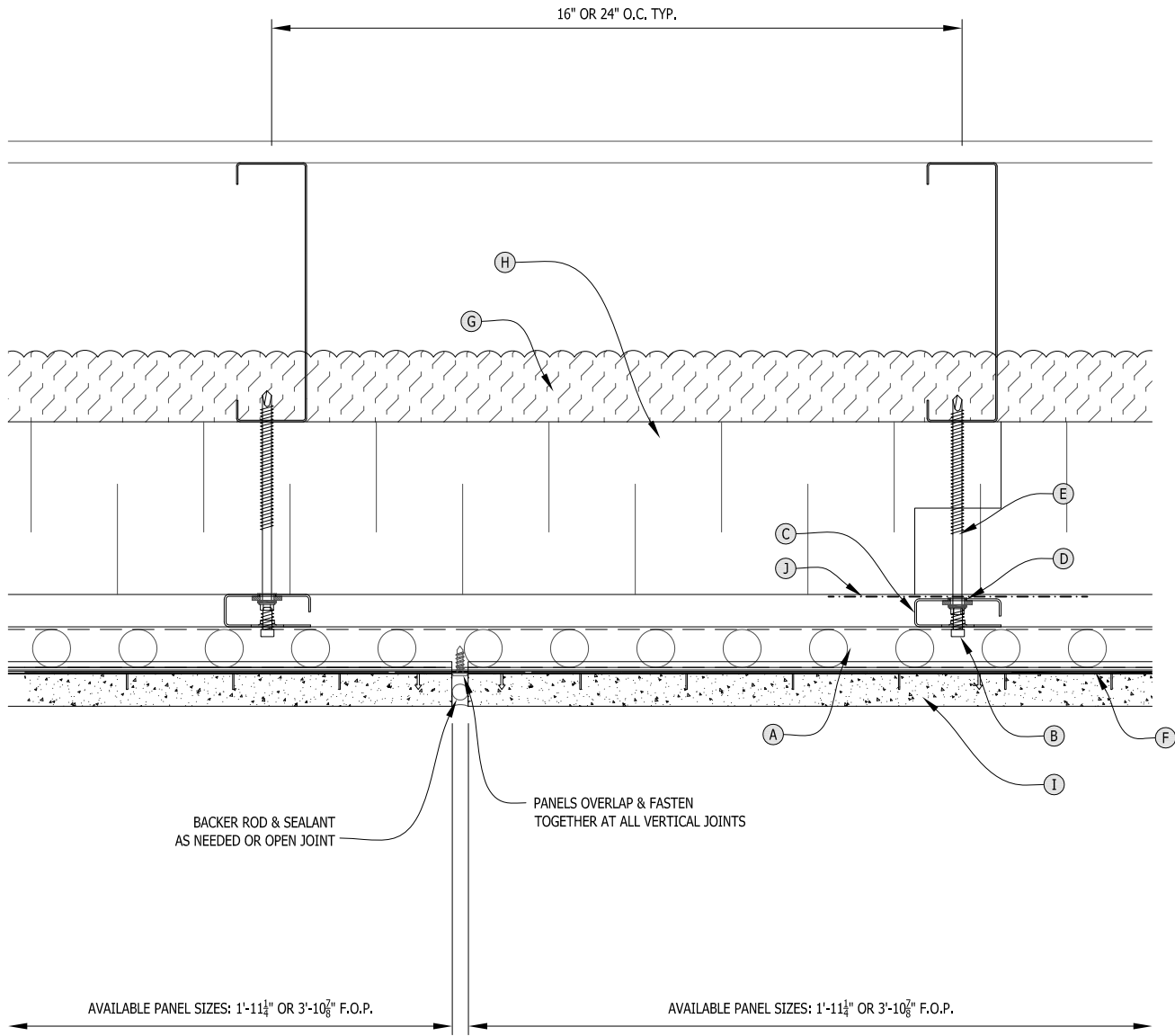
TYPICAL HORIZONTAL JOINT

Scale: 3" = 1'-0"

DATE: 03/31/11



**KNIGHT™ SERIES
 CONCRETE PANELS
 THERMAX™ WALL SYSTEM
 GUIDE DETAIL**



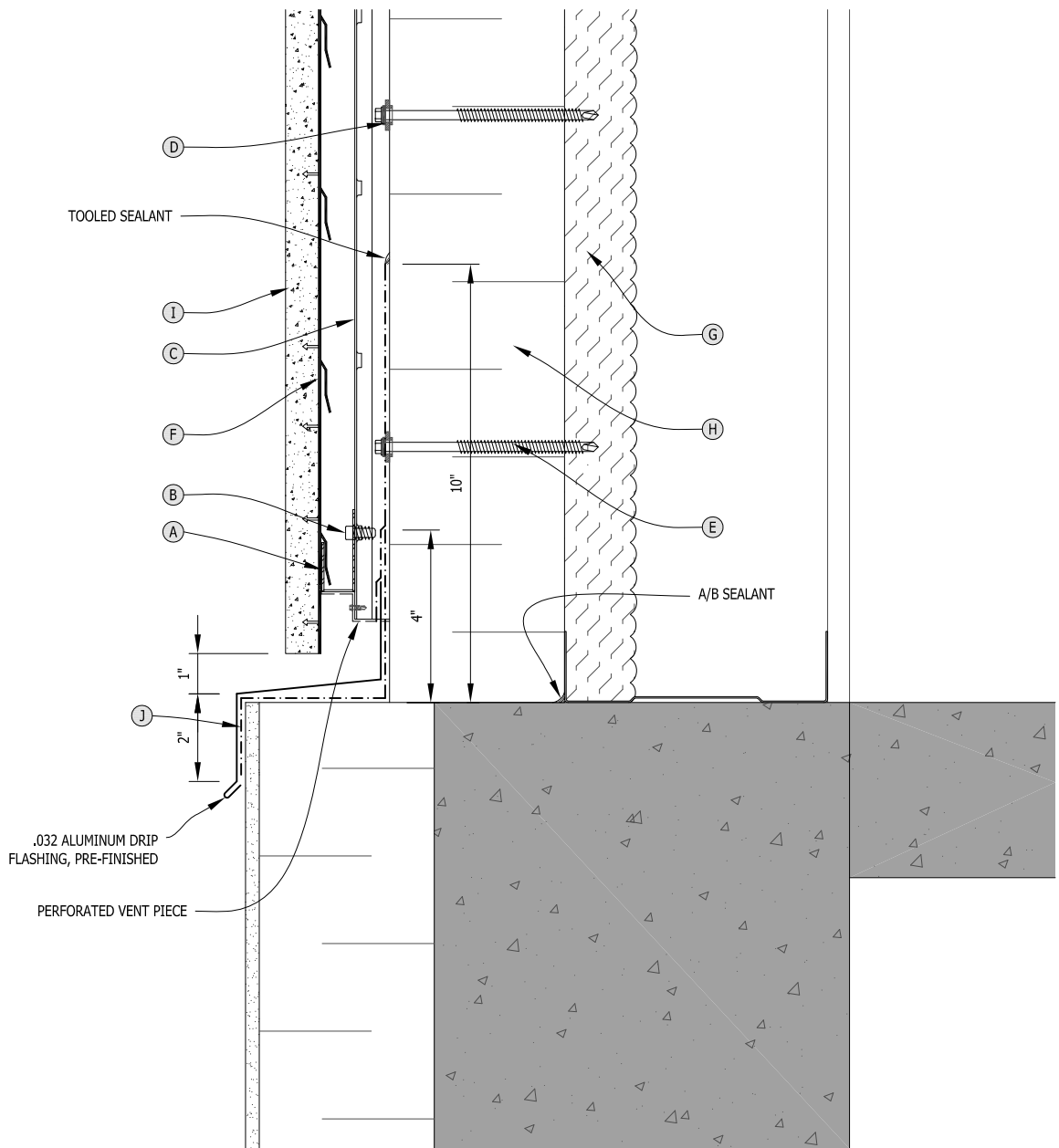
NOTE:
 THESE GUIDE DETAILS ARE PROVIDED FOR INFORMATION ONLY.
 PROJECT SPECIFIC DESIGNS ARE AVAILABLE THAT ADDRESS
 STRUCTURAL ATTACHMENT, THERMAL PERFORMANCE AND
 WEATHERPROOFING. CONTACT KWS FOR FURTHER DETAILS.
 For multi-cladding transition details, or to download the CAD version
 of these details, please visit us online at
www.knightwallsystems.com
 © Knight Wall Systems
 Deer Park, WA - 509.262.0104
 PATENT PENDING

6 TYPICAL VERTICAL JOINT
 Scale: 3" = 1'-0"

DATE: 03/31/11



**KNIGHT™ SERIES
 CONCRETE PANELS
 THERMAX™ WALL SYSTEM
 GUIDE DETAIL**



NOTE:
 THESE GUIDE DETAILS ARE PROVIDED FOR INFORMATION ONLY.
 PROJECT SPECIFIC DESIGNS ARE AVAILABLE THAT ADDRESS
 STRUCTURAL ATTACHMENT, THERMAL PERFORMANCE AND
 WEATHERPROOFING. CONTACT KWS FOR FURTHER DETAILS.
 For multi-cladding transition details, or to download the CAD version
 of these details, please visit us online at
www.knightwallsystems.com
 © Knight Wall Systems
 Deer Park, WA - 509.262.0104
 PATENT PENDING

7

TYPICAL BASE OF WALL

Scale: 3" = 1'-0"

DATE: 03/31/11



**KNIGHT™ SERIES
 CONCRETE PANELS
 THERMAX™ WALL SYSTEM
 GUIDE DETAIL**

ENSURE AIR BARRIER IN ROOF ASSEMBLY TIES INTO THERMAX™ WALL SYSTEM FOR AIR BARRIER CONTINUITY.

CONTRACTOR TO FIELD VERIFY

.040 ALUMINUM CONT. PERFORATED COPING SUPPORT, ATTACHED WITH S.S. FASTENERS @ 24" O.C. OR LESS

WITH .040 ALUMINUM BUTT PLATE, MATCHING COLOR, 6" LONG, CENTERED AT COPING JOINT, 4 BEADS OF SEALANT PER JOINT.

P/T SLOPED WOOD BLOCKING (NOT BY KWS)

PER PLANS

.040 ALUMINUM CONT. PERFORATED COPING CLIP, ATTACHED WITH S.S. FASTENERS @ 24" O.C. OR LESS

PER PLANS

COATED GALVANIZED STEEL TEK3 FASTENERS W/NEOPRENE WASHERS @ 24" O.C. (NOT BY KWS)

±1/2"

I

B

A

D

C

F

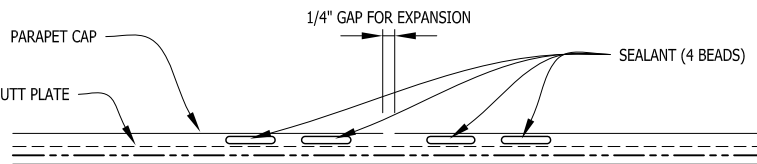
G

H

E

ROOF SHEATHING (NOT BY KWS)

ROOF MEMBRANE (NOT BY KWS)



8A SECTION AT BUTT PLATE
Scale: NTS

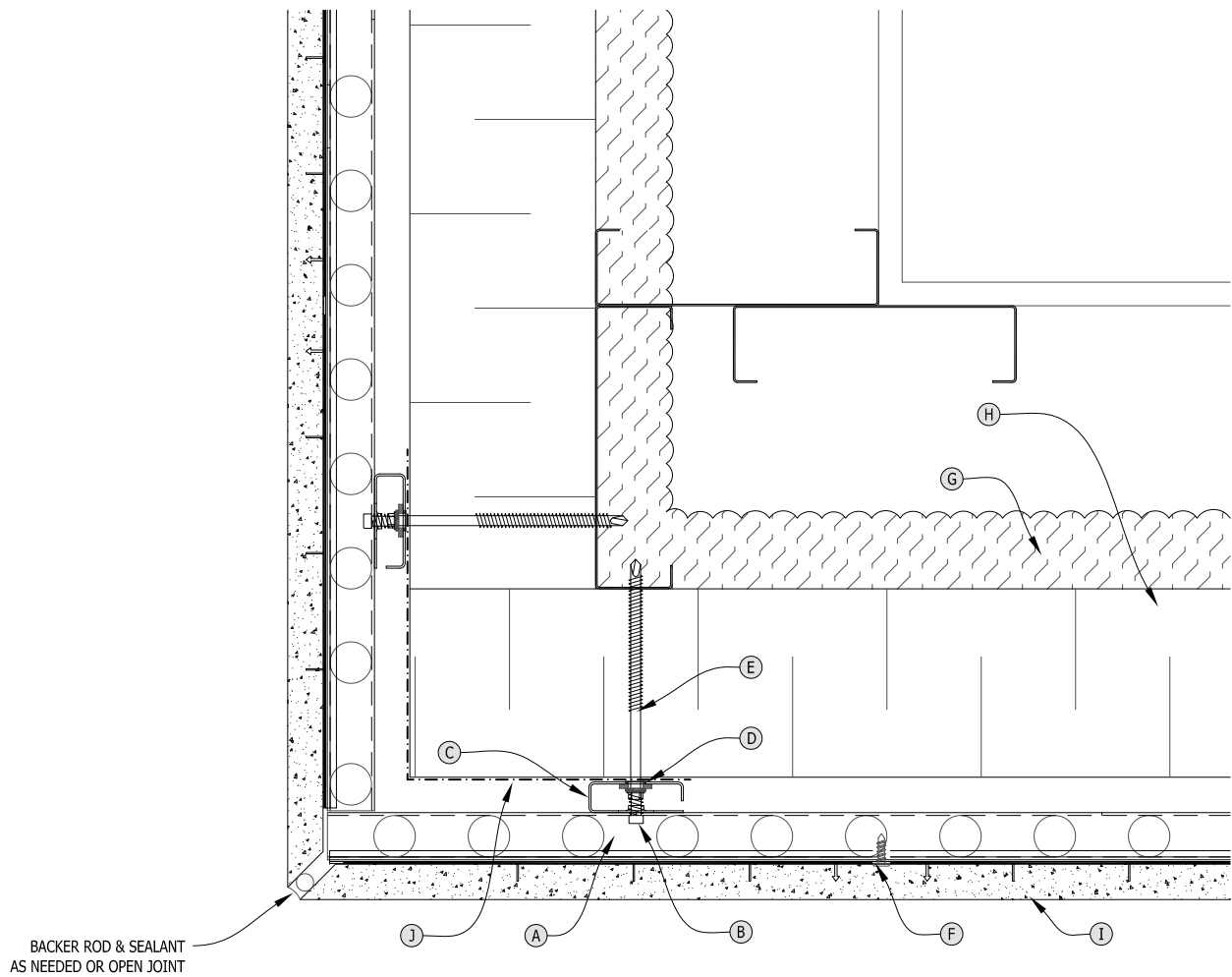
NOTE:
THESE GUIDE DETAILS ARE PROVIDED FOR INFORMATION ONLY. PROJECT SPECIFIC DESIGNS ARE AVAILABLE THAT ADDRESS STRUCTURAL ATTACHMENT, THERMAL PERFORMANCE AND WEATHERPROOFING. CONTACT KWS FOR FURTHER DETAILS. For multi-cladding transition details, or to download the CAD version of these details, please visit us online at www.knightwallsystems.com
© Knight Wall Systems
Deer Park, WA - 509.262.0104
PATENT PENDING

8 PARAPET COPING
Scale: 3" = 1'-0"

DATE: 03/31/11



**KNIGHT™ SERIES
CONCRETE PANELS
THERMAX™ WALL SYSTEM
GUIDE DETAIL**



BACKER ROD & SEALANT
AS NEEDED OR OPEN JOINT

NOTE:
 THESE GUIDE DETAILS ARE PROVIDED FOR INFORMATION ONLY.
 PROJECT SPECIFIC DESIGNS ARE AVAILABLE THAT ADDRESS
 STRUCTURAL ATTACHMENT, THERMAL PERFORMANCE AND
 WEATHERPROOFING. CONTACT KWS FOR FURTHER DETAILS.
 For multi-cladding transition details, or to download the CAD version
 of these details, please visit us online at
www.knightwallsystems.com
 © Knight Wall Systems
 Deer Park, WA - 509.262.0104
 PATENT PENDING

9

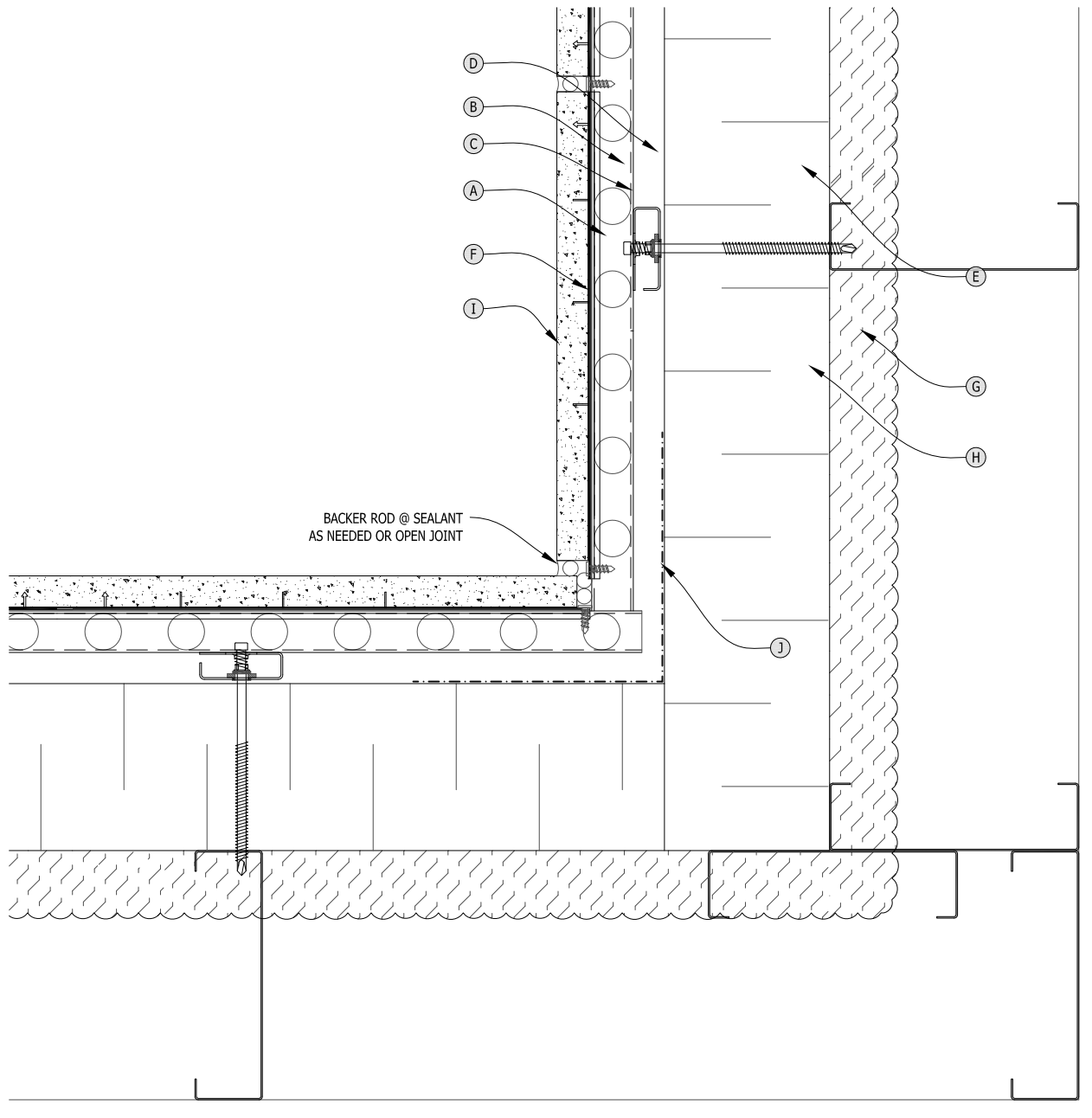
OUTSIDE CORNER

Scale: 3" = 1'-0"

DATE: 03/31/11



**KNIGHT™ SERIES
 CONCRETE PANELS
 THERMAX™ WALL SYSTEM
 GUIDE DETAIL**



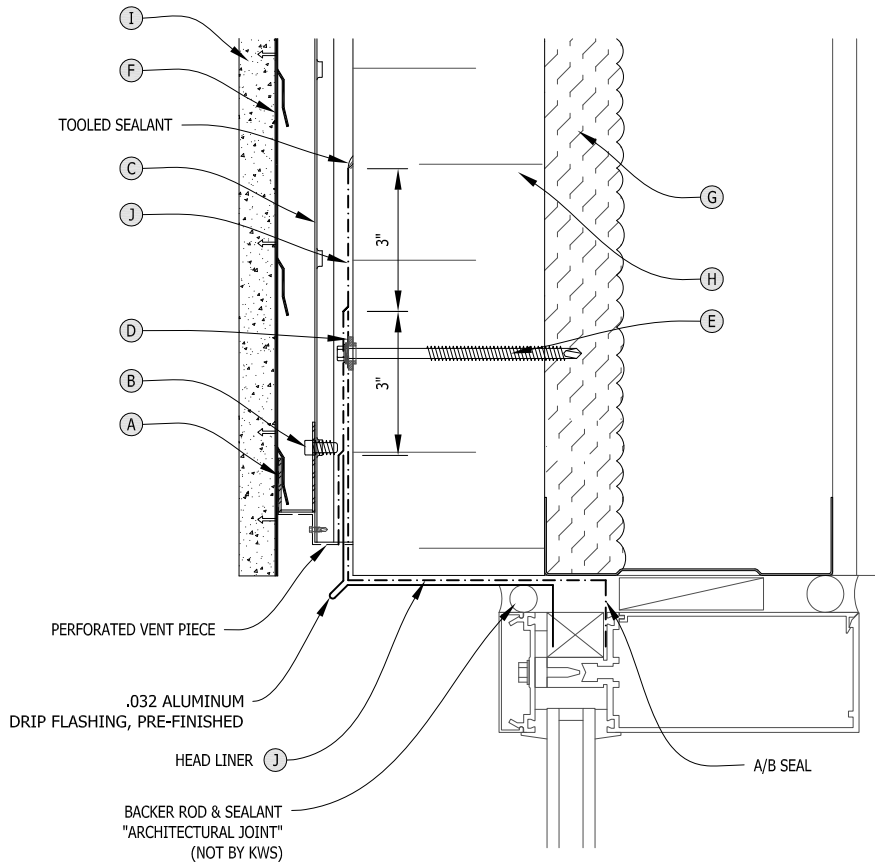
NOTE:
 THESE GUIDE DETAILS ARE PROVIDED FOR INFORMATION ONLY.
 PROJECT SPECIFIC DESIGNS ARE AVAILABLE THAT ADDRESS
 STRUCTURAL ATTACHMENT, THERMAL PERFORMANCE AND
 WEATHERPROOFING. CONTACT KWS FOR FURTHER DETAILS.
 For multi-cladding transition details, or to download the CAD version
 of these details, please visit us online at
www.knightwallsystems.com
 © Knight Wall Systems
 Deer Park, WA - 509.262.0104
 PATENT PENDING

10 INSIDE CORNER
 Scale: 3" = 1'-0"

DATE: 03/31/11



KNIGHT™ SERIES
 CONCRETE PANELS
 THERMAX™ WALL SYSTEM
 GUIDE DETAIL



NOTE:
 THESE GUIDE DETAILS ARE PROVIDED FOR INFORMATION ONLY.
 PROJECT SPECIFIC DESIGNS ARE AVAILABLE THAT ADDRESS
 STRUCTURAL ATTACHMENT, THERMAL PERFORMANCE AND
 WEATHERPROOFING. CONTACT KWS FOR FURTHER DETAILS.
 For multi-cladding transition details, or to download the CAD version
 of these details, please visit us online at
www.knightwallsystems.com
 © Knight Wall Systems
 Deer Park, WA - 509.262.0104
 PATENT PENDING

11

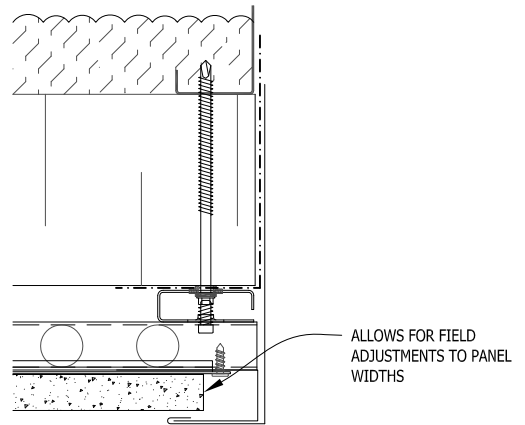
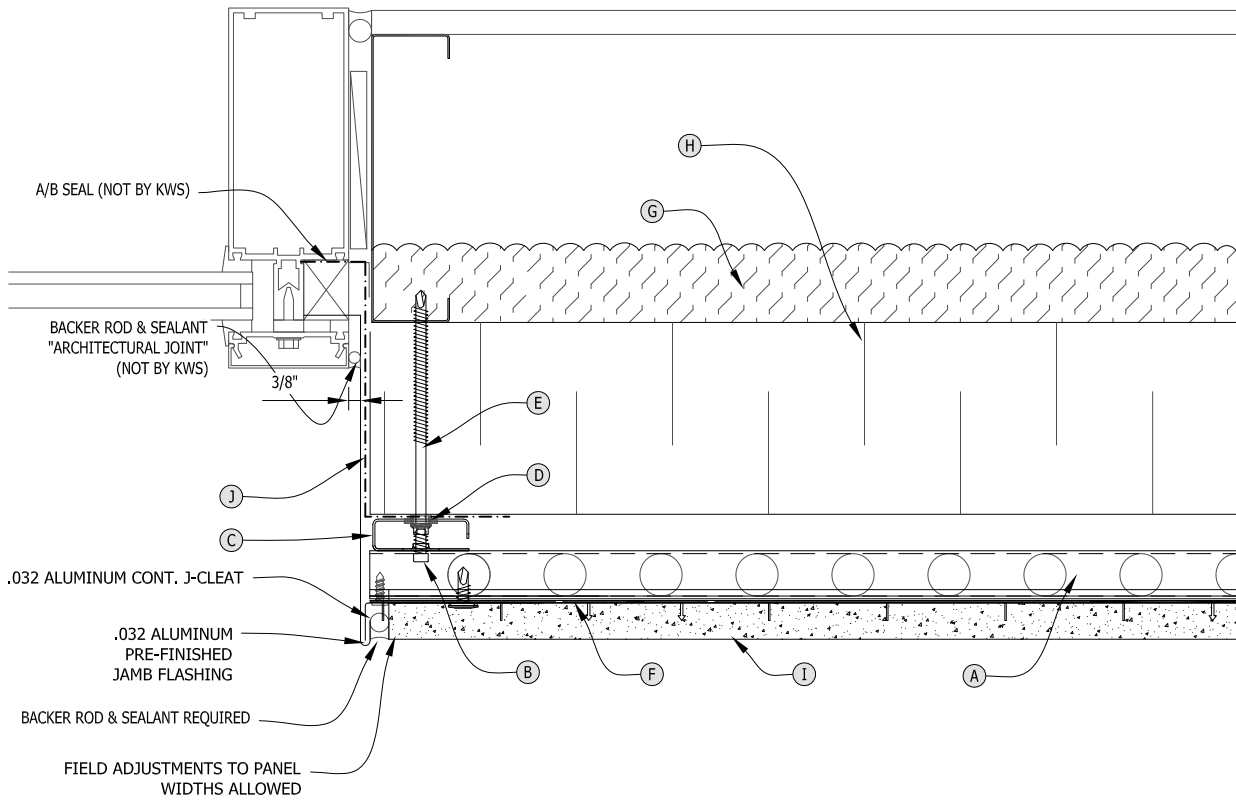
INSET WINDOW HEAD

Scale: 3" = 1'-0"

DATE: 03/31/11



KNIGHT™ SERIES
 CONCRETE PANELS
 THERMAX™ WALL SYSTEM
 GUIDE DETAIL



12A ALTERNATE WINDOW JAMB

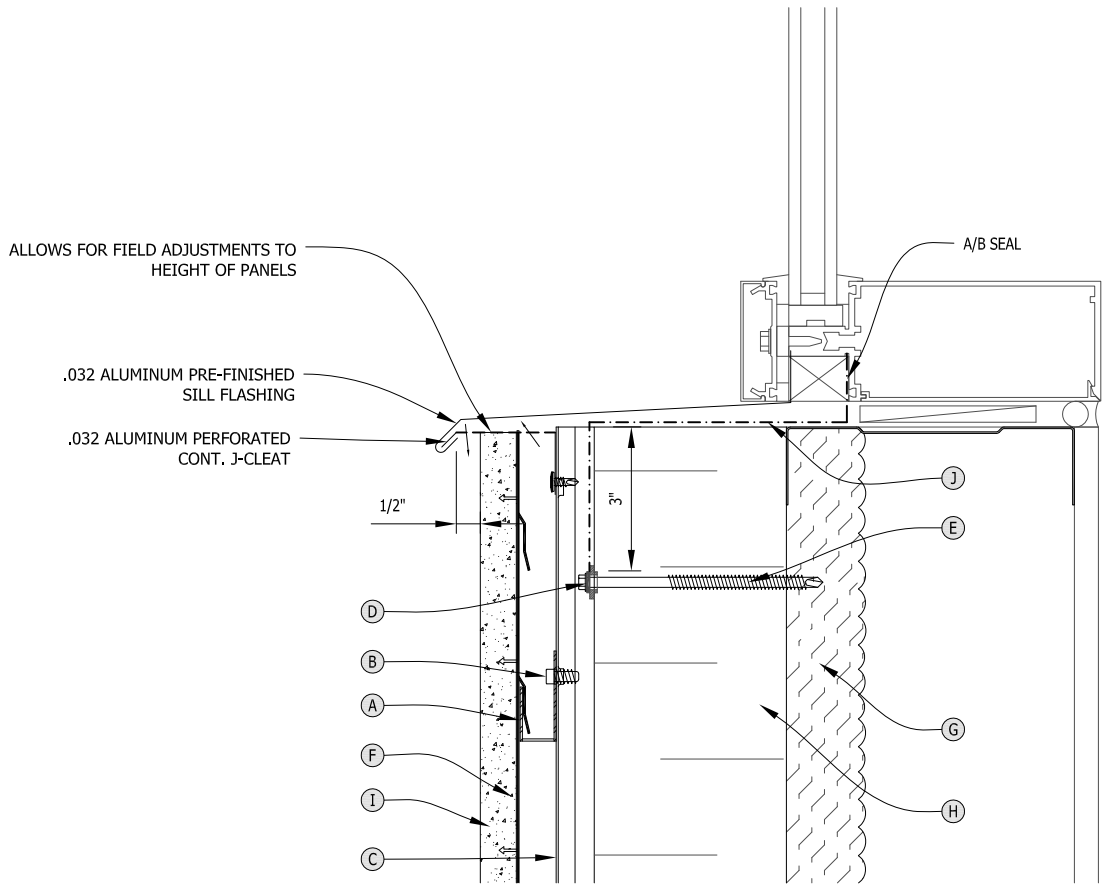
NOTE:
 THESE GUIDE DETAILS ARE PROVIDED FOR INFORMATION ONLY.
 PROJECT SPECIFIC DESIGNS ARE AVAILABLE THAT ADDRESS
 STRUCTURAL ATTACHMENT, THERMAL PERFORMANCE AND
 WEATHERPROOFING. CONTACT KWS FOR FURTHER DETAILS.
 For multi-cladding transition details, or to download the CAD version
 of these details, please visit us online at
www.knightwallsystems.com
 © Knight Wall Systems
 Deer Park, WA - 509.262.0104
 PATENT PENDING

12 INSET WINDOW JAMB
 Scale: 3" = 1'-0"

DATE: 03/31/11



**KNIGHT™ SERIES
 CONCRETE PANELS
 THERMAX™ WALL SYSTEM
 GUIDE DETAIL**



NOTE:
 THESE GUIDE DETAILS ARE PROVIDED FOR INFORMATION ONLY.
 PROJECT SPECIFIC DESIGNS ARE AVAILABLE THAT ADDRESS
 STRUCTURAL ATTACHMENT, THERMAL PERFORMANCE AND
 WEATHERPROOFING. CONTACT KWS FOR FURTHER DETAILS.
 For multi-cladding transition details, or to download the CAD version
 of these details, please visit us online at
www.knightwallsystems.com
 © Knight Wall Systems
 Deer Park, WA - 509.262.0104
 PATENT PENDING

13

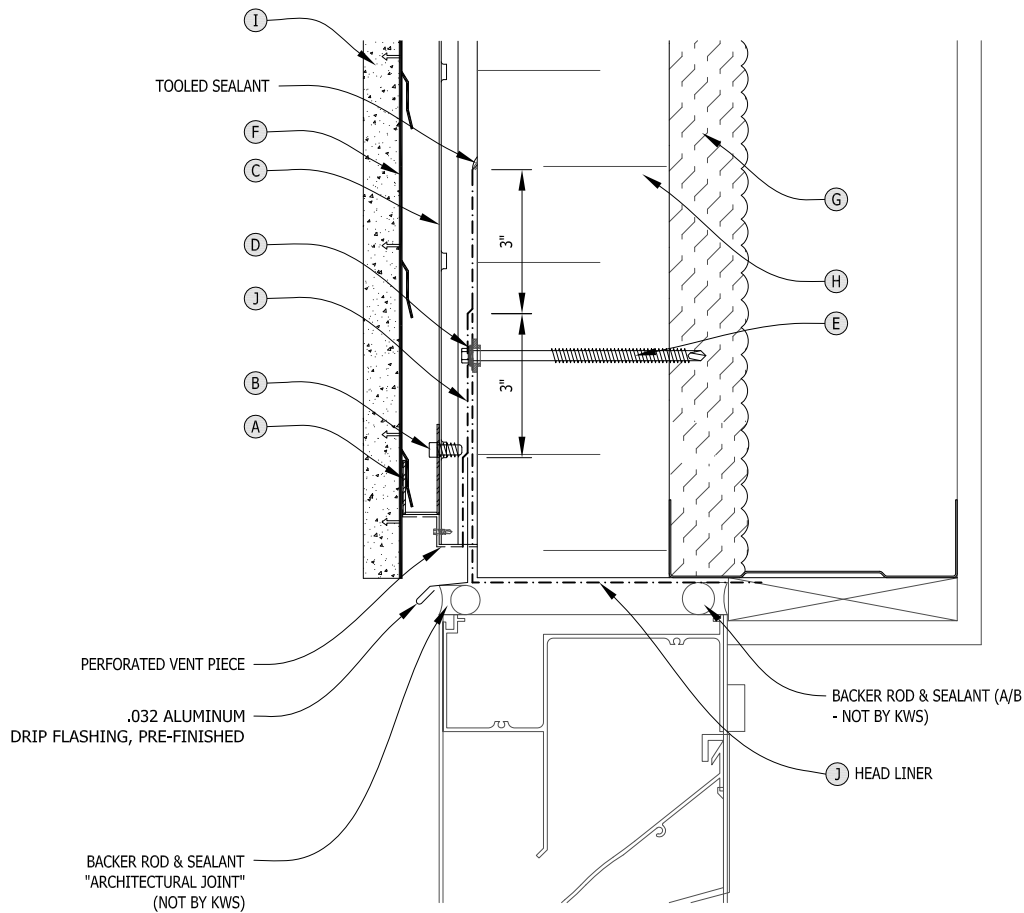
INSET WINDOW SILL

Scale: 3" = 1'-0"

DATE: 03/31/11



**KNIGHT™ SERIES
 CONCRETE PANELS
 THERMAX™ WALL SYSTEM
 GUIDE DETAIL**



NOTE:
 THESE GUIDE DETAILS ARE PROVIDED FOR INFORMATION ONLY.
 PROJECT SPECIFIC DESIGNS ARE AVAILABLE THAT ADDRESS
 STRUCTURAL ATTACHMENT, THERMAL PERFORMANCE AND
 WEATHERPROOFING. CONTACT KWS FOR FURTHER DETAILS.
 For multi-cladding transition details, or to download the CAD version
 of these details, please visit us online at
www.knightwallsystems.com
 © Knight Wall Systems
 Deer Park, WA - 509.262.0104
 PATENT PENDING

14

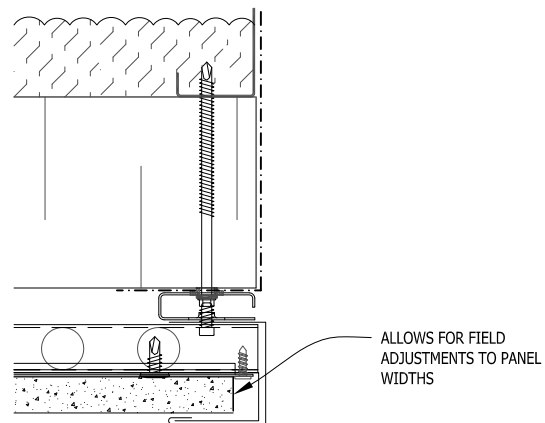
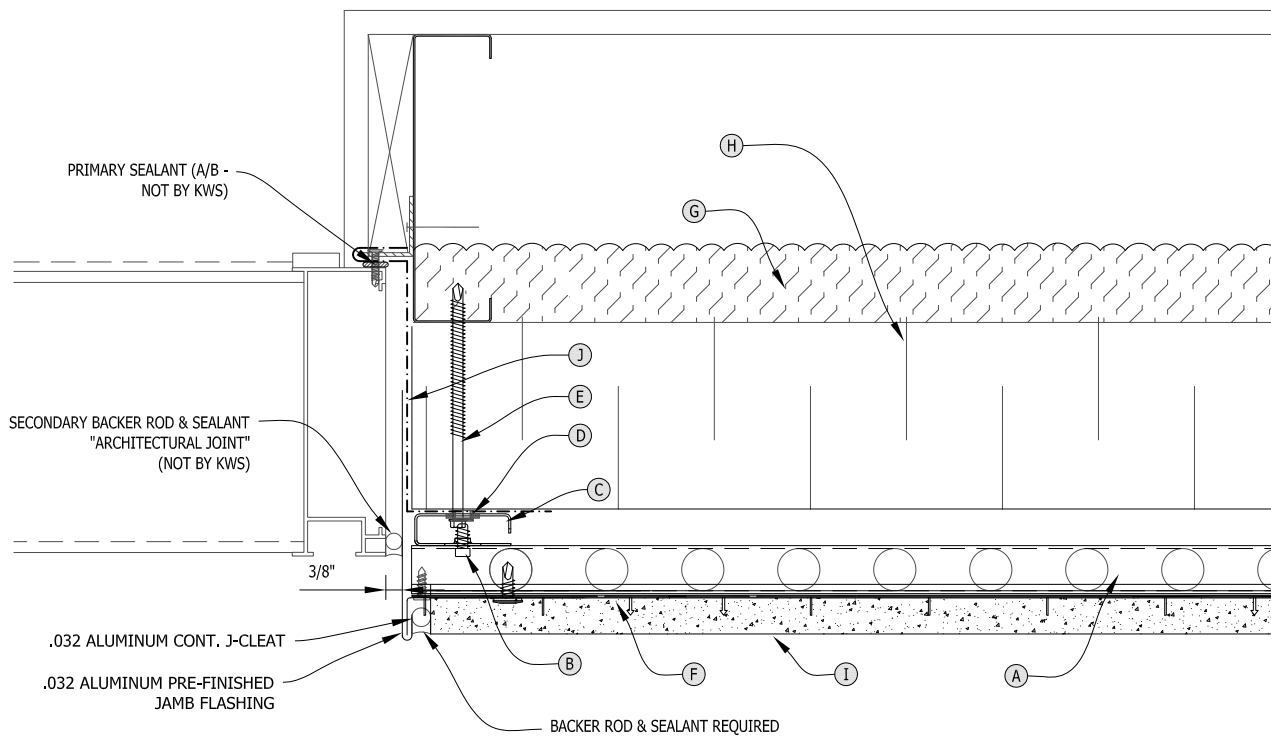
LOUVER HEAD

Scale: 3" = 1'-0"

DATE: 03/31/11



KNIGHT™ SERIES
 CONCRETE PANELS
 THERMAX™ WALL SYSTEM
 GUIDE DETAIL



15A ALTERNATE LOUVER JAMB

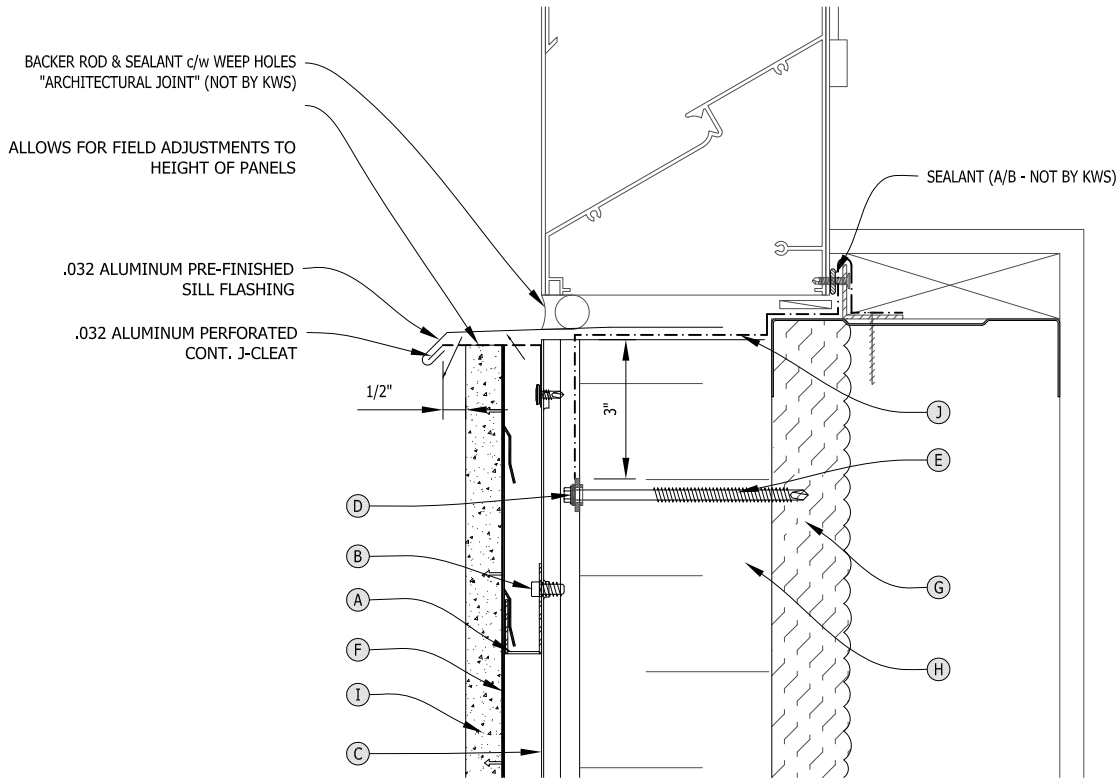
NOTE:
 THESE GUIDE DETAILS ARE PROVIDED FOR INFORMATION ONLY.
 PROJECT SPECIFIC DESIGNS ARE AVAILABLE THAT ADDRESS
 STRUCTURAL ATTACHMENT, THERMAL PERFORMANCE AND
 WEATHERPROOFING. CONTACT KWS FOR FURTHER DETAILS.
 For multi-cladding transition details, or to download the CAD version
 of these details, please visit us online at
www.knightwallsystems.com
 © Knight Wall Systems
 Deer Park, WA - 509.262.0104
 PATENT PENDING

15 LOUVER JAMB RIGHT
 Scale: 3" = 1'-0"

DATE: 03/31/11



KNIGHT™ SERIES
 CONCRETE PANELS
 THERMAX™ WALL SYSTEM
 GUIDE DETAIL



NOTE:
 THESE GUIDE DETAILS ARE PROVIDED FOR INFORMATION ONLY.
 PROJECT SPECIFIC DESIGNS ARE AVAILABLE THAT ADDRESS
 STRUCTURAL ATTACHMENT, THERMAL PERFORMANCE AND
 WEATHERPROOFING. CONTACT KWS FOR FURTHER DETAILS.
 For multi-cladding transition details, or to download the CAD version
 of these details, please visit us online at
www.knightwallsystems.com
 © Knight Wall Systems
 Deer Park, WA - 509.262.0104
 PATENT PENDING

16

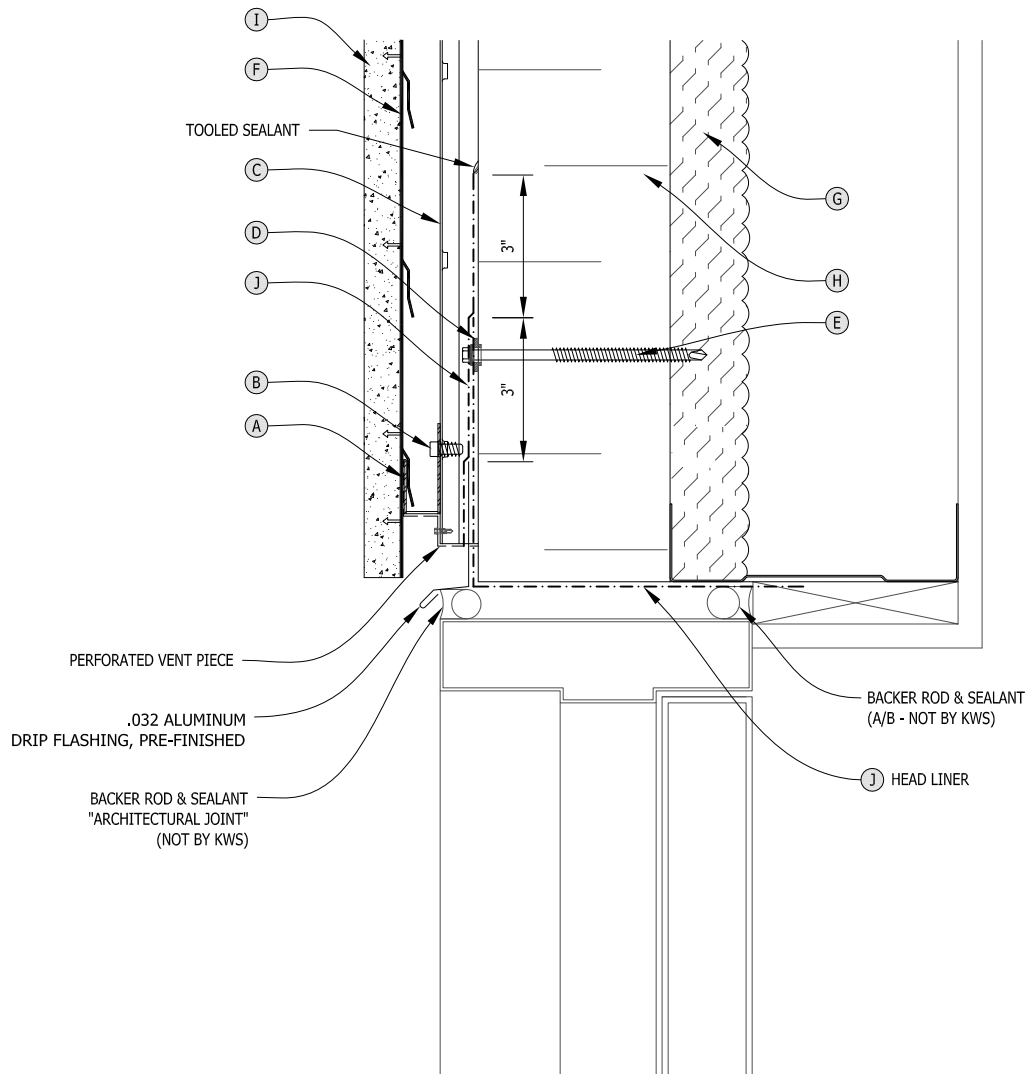
LOUVER SILL

Scale: 3" = 1'-0"

DATE: 03/31/11



KNIGHT™ SERIES
 CONCRETE PANELS
 THERMAX™ WALL SYSTEM
 GUIDE DETAIL



NOTE:
 THESE GUIDE DETAILS ARE PROVIDED FOR INFORMATION ONLY.
 PROJECT SPECIFIC DESIGNS ARE AVAILABLE THAT ADDRESS
 STRUCTURAL ATTACHMENT, THERMAL PERFORMANCE AND
 WEATHERPROOFING. CONTACT KWS FOR FURTHER DETAILS.
 For multi-cladding transition details, or to download the CAD version
 of these details, please visit us online at
www.knightwallsystems.com
 © Knight Wall Systems
 Deer Park, WA - 509.262.0104
 PATENT PENDING

17

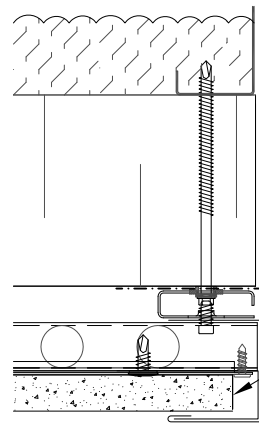
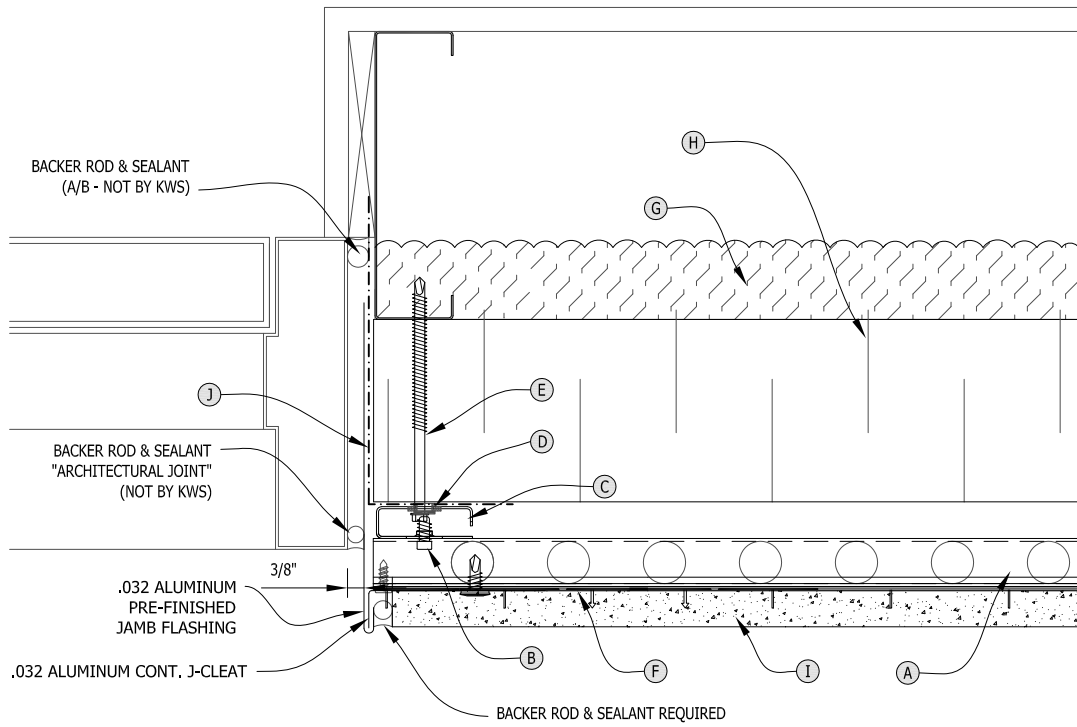
DOOR HEAD

Scale: 3" = 1'-0"

DATE: 03/31/11



KNIGHT™ SERIES
 CONCRETE PANELS
 THERMAX™ WALL SYSTEM
 GUIDE DETAIL



18A ALTERNATE DOOR JAMB

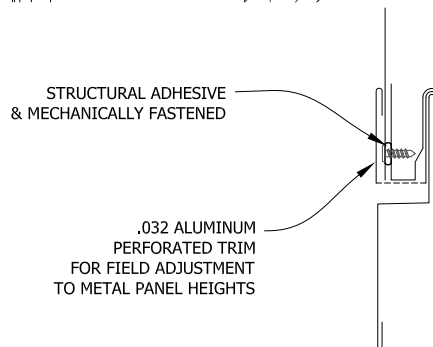
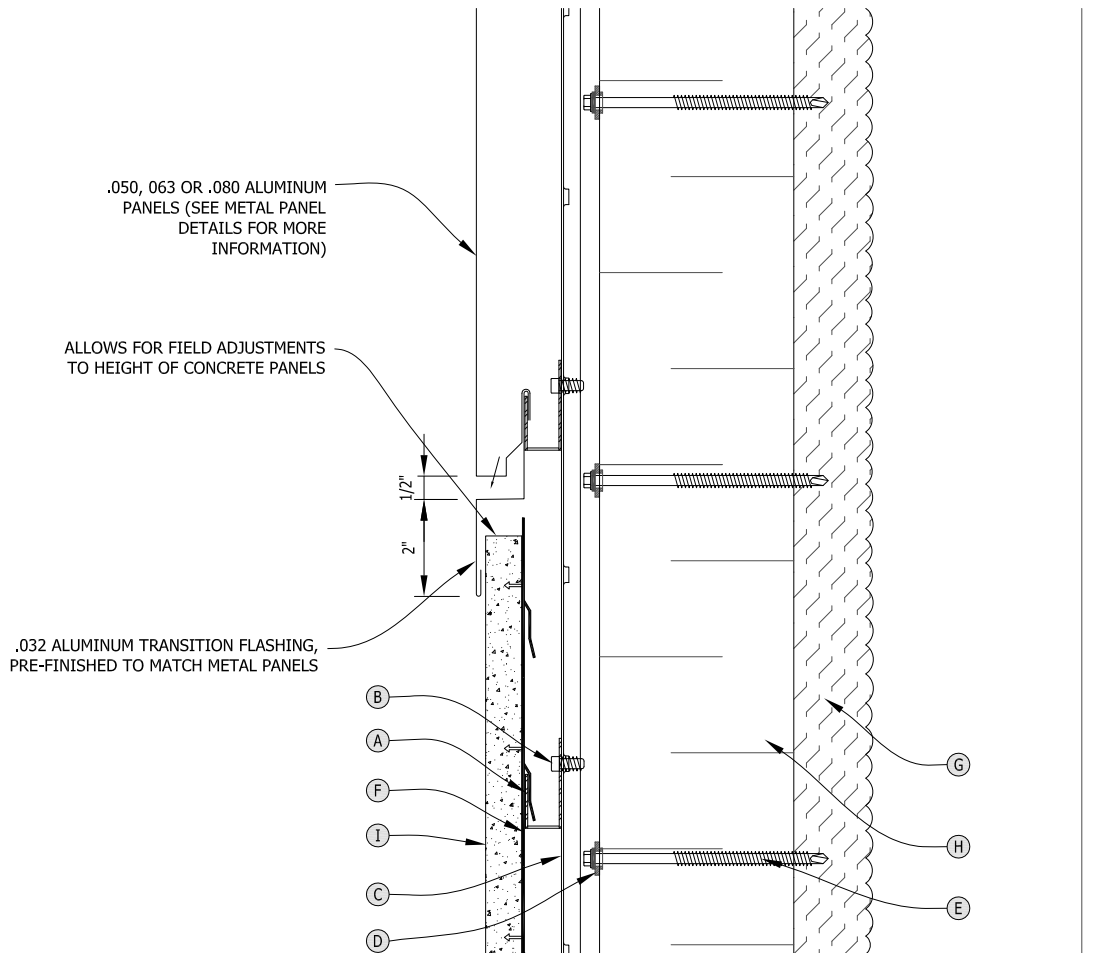
NOTE:
 THESE GUIDE DETAILS ARE PROVIDED FOR INFORMATION ONLY.
 PROJECT SPECIFIC DESIGNS ARE AVAILABLE THAT ADDRESS
 STRUCTURAL ATTACHMENT, THERMAL PERFORMANCE AND
 WEATHERPROOFING. CONTACT KWS FOR FURTHER DETAILS.
 For multi-cladding transition details, or to download the CAD version
 of these details, please visit us online at
www.knightwallsystems.com
 © Knight Wall Systems
 Deer Park, WA - 509.262.0104
 PATENT PENDING

18 DOOR JAMB RIGHT
 Scale: 3" = 1'-0"

DATE: 03/31/11



**KNIGHT™ SERIES
 CONCRETE PANELS
 THERMAX™ WALL SYSTEM
 GUIDE DETAIL**



19A ALTERNATE PANEL BASE

NOTE:
 THESE GUIDE DETAILS ARE PROVIDED FOR INFORMATION ONLY.
 PROJECT SPECIFIC DESIGNS ARE AVAILABLE THAT ADDRESS
 STRUCTURAL ATTACHMENT, THERMAL PERFORMANCE AND
 WEATHERPROOFING. CONTACT KWS FOR FURTHER DETAILS.
 For multi-cladding transition details, or to download the CAD version
 of these details, please visit us online at
www.knightwallsystems.com
 © Knight Wall Systems
 Deer Park, WA - 509.262.0104
 PATENT PENDING

19 PANEL BASE
 Scale: 3" = 1'-0"

DATE: 03/31/11



**KNIGHT™ SERIES
 CONCRETE PANELS
 THERMAX™ WALL SYSTEM
 GUIDE DETAIL**