

RAIL SPACING DETERMINED BY PANEL TYPE AND LOADING CONDITIONS. THE E.O.R. OR PROJECT SPECIFIC SHOP DRAWINGS WILL INDICATE PROPER RAIL AND FASTENER SPACING AND FASTENER SIZE. KWS ONLY SUPPLIES STAINLESS STEEL FASTENERS FOR STEEL AND WOOD STUDS.

CI-Girts USE PRE-THREADED HOLES SPACED AT 4" O.C. IF THIS LAYOUT WILL NOT MATCH THE NEEDS OF THE PROJECT SPECIFIC PANEL LAYOUT, CI-SidingRail (CI-Girt W/O THREADED HOLES) CAN BE USED TO ACCOMMODATE ANY LAYOUT WITH THE USE OF STAINLESS STEEL SELF-DRILLING FASTENERS. CONTACT KWS WITH QUESTIONS OR MORE INFORMATION.



28308 N. CEDAR ROAD
 DEER PARK, WA 99006
 509.262.0104
 sales@knightwallsystems.com
 www.knightwallsystems.com

PART NAME: CI-System Plan View
PART NO.: XXXXX
MATERIAL: AZ50 Galvalume
REVISION DATE: 10/12/2011
DRAWN BY: BN

XXXX
SHEET NO. 01 OF 06
SCALE: 3" = 1'-0"

18 ga GALVALUME
HORIZONTAL
RS-Rail SPACED
AT X" O.C.

18 ga GALVALUME
CI-Girt (OR CI-SidingRail)
SPACED AT (16 OR 24)" O.C.

THERMAX (ci) RIGID
EXTERIOR INSULATION

STAINLESS STEEL
TEK FASTENER OR
CAP SCREW AS
RECOMMENDED BY KWS

STAINLESS STEEL
NO. 12 OR 14 TEK SCREW
WITH ThermaStop
THERMAL ISOLATOR
BY KWS

1 1/2"
3/4"

8" OR 16" O.C.
DESIGN PRESSURE DEPENDENT

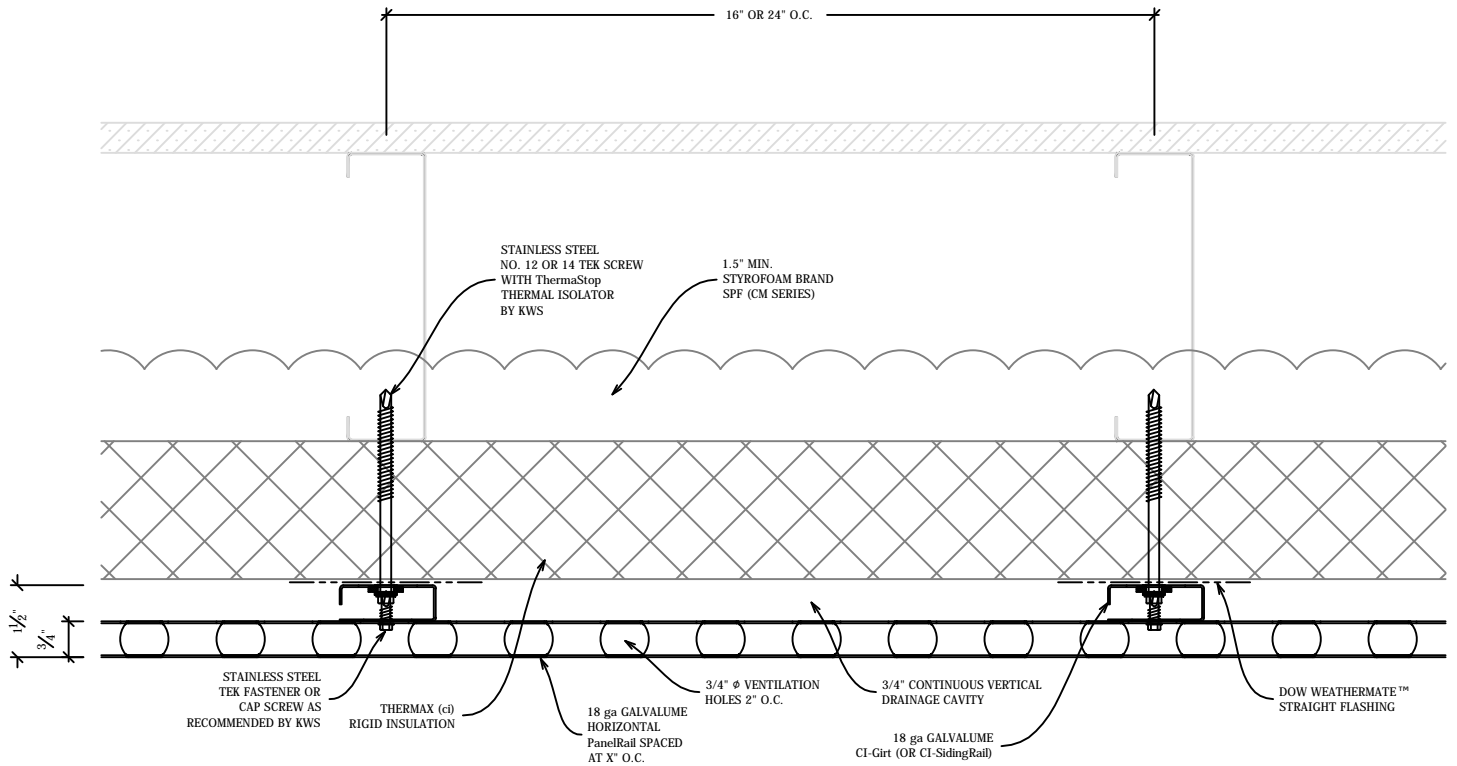
1.5" MIN.
STYROFOAM BRAND
SPF (CM SERIES)



28308 N. CEDAR ROAD
DEER PARK, WA 99006
509.262.0104
sales@knightwallsystems.com
www.knightwallsystems.com

PART NAME: CI-System Section View
PART NO.: XXXXX
MATERIAL: AZ50 Galvalume
REVISION DATE: 10/12/2011
DRAWN BY: BN
© 2011 KNIGHT WALL SYSTEMS
PATENT PENDING

XXXX
SHEET NO. 02 OF 06
SCALE: 6" = 1'-0"



RAIL SPACING DETERMINED BY PANEL TYPE AND LOADING CONDITIONS. THE E.O.R. OR PROJECT SPECIFIC SHOP DRAWINGS WILL INDICATE PROPER RAIL AND FASTENER SPACING AND FASTENER SIZE. KWS ONLY SUPPLIES STAINLESS STEEL FASTENERS FOR STEEL AND WOOD STUDS.

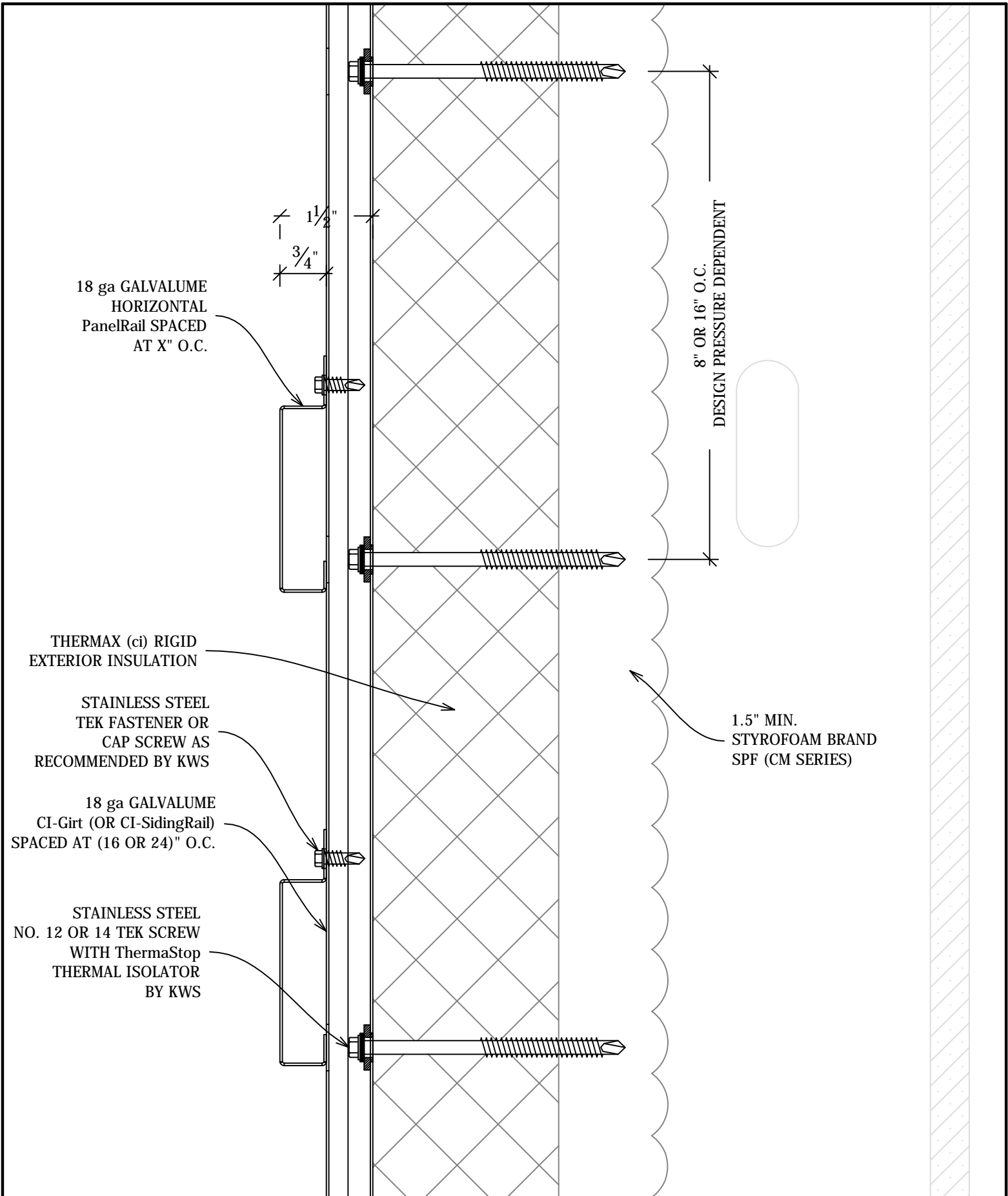
CI-Girts USE PRE-THREADED HOLES SPACED AT 4" O.C. IF THIS LAYOUT WILL NOT MATCH THE NEEDS OF THE PROJECT SPECIFIC PANEL LAYOUT, CI-SidingRail (CI-Girt W/O THREADED HOLES) CAN BE USED TO ACCOMMODATE ANY LAYOUT WITH THE USE OF STAINLESS STEEL SELF-DRILLING FASTENERS. CONTACT KWS WITH QUESTIONS OR MORE INFORMATION.



28308 N. CEDAR ROAD
 DEER PARK, WA 99006
 509.262.0104
 sales@knightwallsystems.com
 www.knightwallsystems.com

PART NAME: CI-PanelTek Plan View
PART NO.: XXXXX
MATERIAL: AZ50 Galvalume
REVISION DATE: 10/12/2011
DRAWN BY: BN

XXXX
SHEET NO. 03 OF 06
SCALE: 3" = 1'-0"



18 ga GALVALUME
HORIZONTAL
PanelRail SPACED
AT X" O.C.

1 1/2"
3/4"

8" OR 16" O.C.
DESIGN PRESSURE DEPENDENT

THERMAX (ci) RIGID
EXTERIOR INSULATION

STAINLESS STEEL
TEK FASTENER OR
CAP SCREW AS
RECOMMENDED BY KWS

1.5" MIN.
STYROFOAM BRAND
SPF (CM SERIES)

18 ga GALVALUME
CI-Girt (OR CI-SidingRail)
SPACED AT (16 OR 24)" O.C.

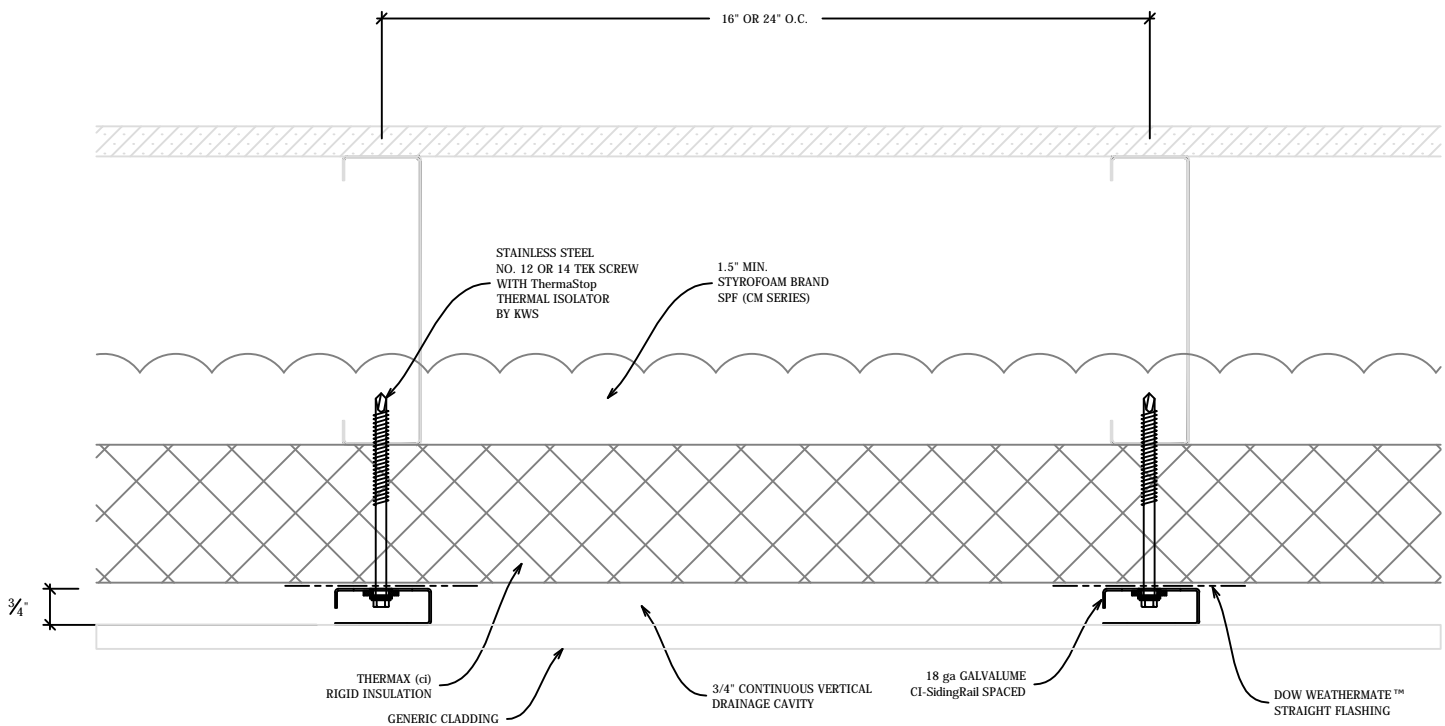
STAINLESS STEEL
NO. 12 OR 14 TEK SCREW
WITH ThermaStop
THERMAL ISOLATOR
BY KWS



28308 N. CEDAR ROAD
DEER PARK, WA 99006
509.262.0104
sales@knightwallsystems.com
www.knightwallsystems.com

PART NAME: CI-PanelTek Section View
PART NO.: XXXXX
MATERIAL: AZ50 Galvalume
REVISION DATE: 10/12/2011
DRAWN BY: BN © 2011 KNIGHT WALL SYSTEMS PATENT PENDING

XXXX
SHEET NO. 04 OF 06
SCALE: 6" = 1'-0"



RAIL SPACING DETERMINED BY PANEL TYPE AND LOADING CONDITIONS. THE E.O.R. OR PROJECT SPECIFIC SHOP DRAWINGS WILL INDICATE PROPER RAIL AND FASTENER SPACING AND FASTENER SIZE. KWS ONLY SUPPLIES STAINLESS STEEL FASTENERS FOR STEEL AND WOOD STUDS.

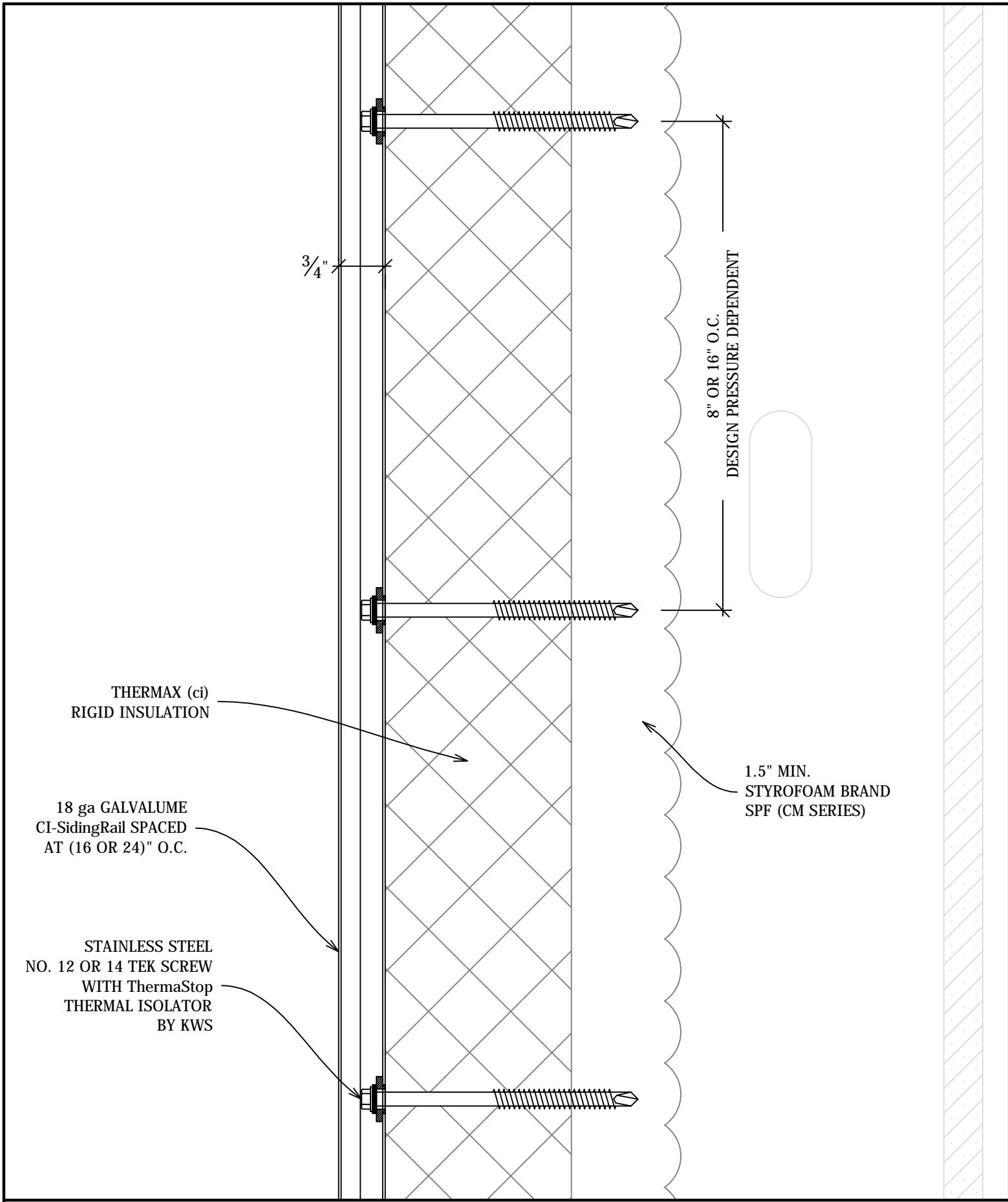
CI-Girts USE PRE-THREADED HOLES SPACED AT 4" O.C. IF THIS LAYOUT WILL NOT MATCH THE NEEDS OF THE PROJECT SPECIFIC PANEL LAYOUT, CI-SidingRail (CI-Girt W/O THREADED HOLES) CAN BE USED TO ACCOMMODATE ANY LAYOUT WITH THE USE OF STAINLESS STEEL SELF-DRILLING FASTENERS. CONTACT KWS WITH QUESTIONS OR MORE INFORMATION.



28308 N. CEDAR ROAD
 DEER PARK, WA 99006
 509.262.0104
 sales@knightwallsystems.com
 www.knightwallsystems.com

PART NAME: CI-SidingRail Plan View		
PART NO.: XXXXX		
MATERIAL: AZ50 Galvalume		
REVISION DATE: 10/12/2011		
DRAWN BY: BN	© 2011 KNIGHT WALL SYSTEMS	PATENT PENDING

XXXX
SHEET NO. 05 OF 06
SCALE: 3" = 1'-0"



3/4"

8" OR 16" O.C.
DESIGN PRESSURE DEPENDENT

THERMAX (ci)
RIGID INSULATION

18 ga GALVALUME
CI-SidingRail SPACED
AT (16 OR 24)" O.C.

STAINLESS STEEL
NO. 12 OR 14 TEK SCREW
WITH ThermaStop
THERMAL ISOLATOR
BY KWS

1.5" MIN.
STYROFOAM BRAND
SPF (CM SERIES)



28308 N. CEDAR ROAD
DEER PARK, WA 99006
509.262.0104
sales@knightwallsystems.com
www.knightwallsystems.com

PART NAME: CI-SidingRail Section View		
PART NO.: XXXXX		
MATERIAL: AZ50 Galvalume		
REVISION DATE: 10/12/2011		
DRAWN BY: BN	© 2011 KNIGHT WALL SYSTEMS	PATENT PENDING

XXXX
SHEET NO. 06 OF 06
SCALE: 6" = 1'-0"